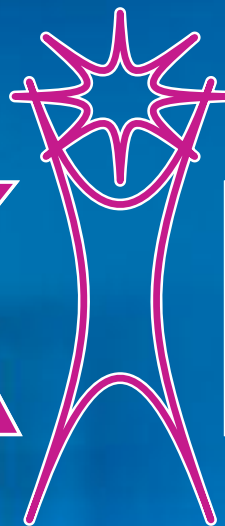


the

WOKING



magazine




**Eastwood Leisure Centre
opens in Sheerwater**

**Comfortable and safe independent
living 'Hales' older people**

Winter 2021

Please read and then recycle

  @wokingcouncil

 www.facebook.com/wokingbc

 www.woking.gov.uk/thewokingmagazine





SUPPORTING LOCAL PANTO

GOK WAN HARRIET THORPE AARON JAMES



Snow White

and the Seven Dwarfs

THE FAIREST PANTO IN THE LAND

SAT 4 DEC 2021 - SUN 2 JAN 2022



NEW VICTORIA THEATRE
WOKING

ATG TICKETS 0844 871 7615*
[ATGTICKETS.COM/Woking](https://www.atgtickets.com/Woking)

*Fees apply. Calls cost up to 7p per minute, plus your phone company's access charge.



Introduction



Welcome to the winter edition of The Woking Magazine – your window on Woking Borough.

Winter is almost upon us and most of us are gearing up for the colder months ahead. The festive season is a time for family, friends and reflection. So it's a great chance to look forward to some of the exciting projects going on around the borough.

With autumn being the season of change, we are thrilled to announce the completion of phase one in the Sheerwater Regeneration Project. The new state-of-the-art Eastwood Leisure Centre is now open for everyone to enjoy with inclusive leisure facilities like no other.

Why not wrap up warm and get out and about to try out our new public arts trail? The 30 minute walk starting in Brewery Road and finishing in Chobham Road is a unique and exciting way to take in some of Woking's art culture.

Elsewhere in the borough, Woking People of Faith have been working hard to deliver community and religious harmony, advancing the education and understanding of different beliefs.

Now with winter upon us, these colder nights mean only one thing, the festive season will soon be here. Discover some of the great events and activities taking place across Woking to celebrate the festive season safely with family and friends.

Woking are committed to supporting our community in delivering these wonderful and exciting projects coming to fruition.

That just leaves me to wish you all a safe and joyous festive season and a happy new year.

Andy Denner
The Woking Magazine
Editor

#WEAREWOKING

Front cover: Freedom Leisure instructor, Chris, taking Ben through his paces
Inset: Hale End Court



Contents

	News in brief Latest news from across the borough	4
	Eastwood Leisure Centre New centre open for business	10
	Victoria Arch widening scheme Update on the highway enhancement scheme	12
	Introducing Hale End Court Old Woking's latest extra care housing development	16
	Money matters See how your Council Tax is spent	18
	Civic Awards Honouring outstanding members of the community	20
	Woking People of Faith Explore the work of this diverse local charity	24
	Discover Woking's Art Trail Take a stroll among iconic pieces of public art	26
	Why don't you... Find job seeking support	30

Contact details

The Woking Magazine is compiled and published three times a year by Woking Borough Council. A total of 50,000 copies are printed and delivered free to households and many public information points across the borough.

Editorial Team: Andy Denner, phone 01483 743026, email andy.denner@woking.gov.uk **Quantum PR**, phone 01233 500200, email charlie@quantumpr.co.uk
Design: Quantum PR

If you wish to **advertise** in The Woking Magazine, please call Andy Denner on 01483 743026, or email andy.denner@woking.gov.uk

The appearance of adverts or loose leaf inserts in The Woking Magazine does not constitute an endorsement by the Council. The Woking Magazine is distributed to households via Royal Mail. We have no control over the type or quantity of other materials that are delivered by Royal Mail at the same time.

Some content within this publication may pre-date current government imposed regulations in force to control the spread of Coronavirus.

New hospital discharge service for Woking

A new hospital discharge support service is leading the way in linking patients discharged from local hospitals with borough council services.

Dedicated council officers will work with patients who have been identified as requiring non-complex, ongoing care, to help them easily access the support they need to regain their independence once back at home.

Upon leaving hospital, Discharge Officers will assist patients to create a bespoke care plan with individual goals identified, linking them directly to council services such as community meals, handyperson service, social prescribing and housing.

Speaking about the new service, Cllr Debbie Harlow, Woking Borough Council's Portfolio Holder for Health



and Wellbeing, said: "The service enables patients leaving hospital to settle back at home with the peace of mind that they will continue to have access to services and support, despite no longer being in hospital, with the aspiration of reducing re-admittance numbers and therefore relieving pressure on front line services."

The service is funded by the North West Surrey Alliance Board and offered to all vulnerable patients across North West Surrey needing support on discharge from Ashford and St Peter's Hospitals, Walton Community Hospital and Woking Community Hospital.

Have you considered volunteering?

Volunteer Woking offers a wide variety of volunteering roles and options, making it easier than you think to find something that makes a difference and fits around your interests, skills and lifestyle.

Whether you have an hour a week to spare, an evening a month or you would like to support a one off event, there's something for all ages and abilities. Here's just a few of our latest opportunities:

- **Brockhill Helpers**
Brockhill sheltered accommodation team in Goldsworth Park is looking for volunteers to assist with their tenant days out.
- **Oxfam Retail Volunteer**
Opportunities to work at one of Oxfam's retail stores, either on the shop floor or in the backroom.
- **Woking Sea Cadets & Royal Marines Cadets Instructors**
Uniformed adult instructors to help with ongoing progression of successful unit. Available Monday and Thursday evenings and some weekends.

Interested? Find out more about these and many other volunteering opportunities by emailing volunteer@woking.gov.uk, call **01483 743851** or visit www.volunteerwoking.org.uk

We will remember them

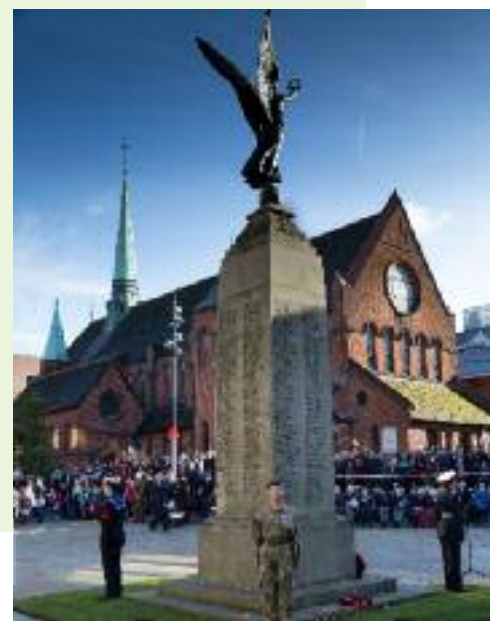
Join veterans, serving members of the military, cadets and other organisations to honour and remember fallen soldiers on Sunday 14 November 2021 during a Service of Remembrance.

The ceremony will commence at 10.30am with Marching of Colours. A two-minute silence will be held at 11am before concluding with the laying of wreaths.

Organisations or individuals wishing to have a wreath laid during the event should contact Pauline Jackson by emailing pauline.jackson@woking.gov.uk, or calling **01483 743025**, giving the name of the organisation.

A two-minute silence will also be observed in Jubilee Square at 11am on Armistice Day, **Thursday 11 November.**

We will remember them.



Boost your immunity and get the right health advice this winter

The NHS is here to help and there are a number of ways you can help the NHS help you this winter by using the service that best meets your needs.

Flu and Covid-19 viruses have the potential to increase pressures faced by the NHS, it's therefore important that you get vaccinated if you are eligible.

Those eligible for the free flu vaccination are:

- all children aged 2 to 15 (but not 16 years or older) on 31 August 2021
- those aged six months to under 50 years in clinical risk groups
- pregnant women
- those aged 50 years and over
- those in long-stay residential care homes
- carers

- close contacts of immunocompromised individuals
- frontline health and social care staff.

Covid-19 booster

Covid-19 booster doses could be offered (correct at time of print), starting with those most at risk of the disease. This will include people aged over 70, clinically extremely vulnerable adults and those who are immunosuppressed. If you are eligible you will be contacted in the coming weeks.

NHS 111

If you need urgent medical help go to NHS 111 first, available 24/7, visit www.111.nhs.uk or call **111**. In a medical emergency or if someone's life is at risk, always call **999**.

For more information, please visit www.surreyheartlandscg.nhs.uk/winterwellness

Get your Surrey Carers' Flu Jab Voucher

If you are a carer looking after someone who is elderly or disabled, you can request a flu jab at your GP practice or take a Surrey Carers' Flu Jab Voucher to your nearest participating community pharmacy. The vouchers provide the assurance

that you are known to carers services and are therefore entitled to a free vaccination.

Find out more about the Surrey Carers' Flu Voucher at Action for Carers Surrey by visiting www.actionforcarers.org.uk/flu

New Beginnings exhibition returns to The Lightbox

Unique works of art from the Women's Support Centre will go on display, as the 'New Beginnings' art exhibition returns to The Lightbox.

Showcasing the diverse range of artistic talent displayed by women across the county, the exhibition features work submitted to the Women's Support Centre, which is open to all women in Surrey prisons or those in contact with the Criminal Justice System.

This year's theme 'My Hidden Self' was selected by the women and staff of the centre.

centre support clients to recognise and address their needs with the aim of reintegrating back into the community and leading a more stable life.

It provides bespoke, person centered, one-to-one support to clients and runs a weekly drop-in session. Support can include assistance with housing, accessing benefits, parenting, advocacy at court and signposting to appropriate specialist agencies.



Hope by Alex

The exhibition is open at The Lightbox until 28 November 2021. For more information, please visit www.thelightbox.org.uk

The annual art competition for women is run by the Women's Support Centre and supported by The Lightbox and Woking Borough Council.



The Women's Support Centre offers help and support to women at risk of coming into contact with the Criminal Justice System. Staff at the

Japanese Cherry Blossoms by Ann

New electric vehicle charging points



Twenty new on-street electric vehicle (EV) charging bays are due to be available in Woking this autumn.

There will be four bays each in Church Street East, Oriental Road, Maybury Road and Montgomery Road. Another site is yet to be determined.

It will only take a couple of hours for the 22 kilowatt charging points to charge up to 80% of an EV battery, at a cost of 30p per kilowatt hour (kWh) (based on a Nissan Leaf 2018 with a battery capacity of 40 kWh). The new chargers are part of a trial funded by Woking Borough Council, Surrey County Council and Enterprise M3 Local Enterprise Partnership.

The aim of the trial is to understand key issues relating to on-street charging and the impacts of installing chargers, such as the cost, policies, public support and maintenance. The lessons learnt from the trial will be used to inform the roll-out of charging infrastructure across Surrey.

These points are in addition to charging points already available in Brewery Road, Shoppers and Victoria Way town centre car parks.

For more information about electric vehicles, including a charging point map, visit www.surreycc.gov.uk/electricvehicles

Have you heard the word?

Did you know that Woking has its own talking newspaper?

Here at Woking Talking Newspaper (WTN), volunteers record articles weekly from the Woking and Chobham News & Mail and editions of The Woking Magazine, providing a free service for the benefit of visually impaired residents of all ages and those who have difficulty holding a newspaper.

The service enables users to stay in touch with news in and around Woking, and provides them with topics of conversation with relatives, neighbours, carers and friends.

Access to the newspaper is available online, via the Alexa app or using special equipment that can be provided free of charge and is straightforward to use.

WTN is actively seeking new listeners, so please pass on details to anyone you know who may enjoy or benefit from the free service.

You can listen to the material and check if the prospective listener would like this service by visiting www.wokingtn.org.uk/listen

For more information, please contact WTN at info@wokingtn.org.uk or call Tim Harris on **07971 512786**.

AS SEEN ON

MARK HUNTER

 ★★★★★

Your local car body repair expert

➤ Major Panel Damage?

➤ Dents?

➤ Paintwork Scratches?

➤ Bumper Scuffs & Cracks?

Don't lose out on your no claims bonus, call for your free estimate today!

FREE COLLECTION AND DELIVERY
FROM YOUR HOME OR WORKPLACE
REPAIRS COMPLETED AT OUR
CAR CARE CENTRE IN WOKING

SAME DAY REPAIRS GUARANTEED

01932 336999

email mark.hunter@chipsaway.co.uk
or visit www.chipsaway.biz

*Strength of repair will be contingent on material quality

Planning Inspector approves the Borough’s future development policy

A planning policy document that identifies future urban and Green Belt sites for future development has been found ‘sound and legally compliant’ by a Secretary of State appointed Planning Inspector.

The document identifies urban and Green Belt sites for future housing, employment and infrastructure within the Borough to ensure development requirements are met in a sustainable manner.

In the report the Inspector concluded that Woking’s Site Allocations DPD is ‘sound, legally compliant and has met the requirements of the Duty of Cooperation’, subject to his recommended schedule of main modifications.

Cllr Gary Elson, Woking Borough Council’s Portfolio Holder for Planning Policy, said: “After a long and complex process, we are extremely pleased that the

Planning Inspector has found our Site Allocations DPD ‘sound and legally compliant’, subject to a number of modifications.

“This is a significant step towards the adoption of the DPD, which will provide a positive framework for the future sustainable development of the Borough until 2027 and safeguards land to meet future development needs between 2027 and 2040.”

Following its publication, the Inspector’s report and main modifications will be considered by the relevant committee before it is presented to Council for adoption later this year.

To review the Inspector’s report, please visit www.woking2027.info/allocations/sadpdxam/sadpdreport

Council commits to Anti-Social Behaviour Pledge

Woking Borough Council has signed a pledge, committing to support residents experiencing anti-social behaviour in a consistent and dedicated manner.

The Anti-Social Behaviour Pledge is led by national victim’s charity, ASB Help, which actively promotes the rights of people experiencing all forms of anti-social behaviour.

A key part of the pledge is to continue to encourage the use of community triggers, a legal tool which empowers victims of persistent anti-social behaviour to request a formal multi-agency case review.

In signing the Anti-Social Behaviour Pledge, Woking Borough Council has committed to:

- promote awareness and publicise community triggers
- ensure the council is legally compliant and embraces the spirit of community triggers
- continually review and learn from best practice
- work collaboratively and strategically to end anti-social behaviour
- put victims first and deter perpetrators.

Cllr Debbie Harlow, Woking Borough Council’s Portfolio Holder for Community Safety, said: “Woking is generally a very safe place to live, with 84 per cent of residents indicating they felt safe in

a recent resident satisfaction survey. However, we can all be affected by incidents of abusive, violent or threatening behaviour.

“By signing the Anti-Social Behaviour Pledge, we believe it sends a clear message that we are committed to supporting local people and creating safer communities for residents.”

A community trigger can be invoked by any resident or group of residents in the borough that are suffering from what they believe is anti-social behaviour.

For more information about community triggers, please visit www.woking.gov.uk/communitytrigger



SHARED OWNERSHIP



Byfleet Oaks



Unlock the door to your new home in the heart of West Byfleet.

Buy from £100,000*

*Represents 1 bed apartment. 40% share. The full market value is £250,000.

sales.pahousing.co.uk/byfleetoaks
sales@pahousing.co.uk
 01932 559 809

Paragon App
PA Housing

Any details included are correct at time of going to print. These details are for guidance only and do not form part of any contract. They cannot be relied upon as accurately describing any of the specified matters prescribed.

Computer generated imagery

Clearwell mobility

Your Local Mobility Experts

Riser Recliners



from **£499** ex-VAT

Mobility Scooters



from **£649** ex-VAT

Wheeled Walkers



from **£69.99** ex-VAT

Stairlifts



from **£1,690** ex-VAT

Woking Showroom
 105 Goldsworth Road
 Woking
 GU21 6LJ

Call 01483 767 733

Mon-Sat: 9:00am - 5:00pm



Motability





COVID

-  Limited customer groups
-  Hand sanitising stations
-  Distancing measures
-  Face masks available



SECURE MEASURES

Shop online - www.clearwellmobility.co.uk

New strategy to support residents' health and wellbeing

A new strategy that sets out five key priorities to support the health and wellbeing of borough residents was approved by Full Council earlier this year.

The Health and Wellbeing Strategy 2021-2031 takes into account the actions needed to support the borough's most vulnerable residents.

Health is impacted by a wide range of circumstances including where you were born, grow up, live, work and age, as well as access to, and quality of health, and social care. These wider determinants of health can have a positive and negative impact on health.

Councils can influence these determinants through its role in planning, designing and developing services for residents.

The strategy underpins the Council's corporate objective of 'improving the health and wellbeing of all residents' and demonstrates how council services impact the wellbeing of residents.

The five cornerstones of the strategy.

- Support and wherever possible, improve the mental health of residents.
- Identify and support people experiencing social isolation and loneliness.
- Reduce obesity.
- Empower residents to live independent lives.
- Support the wellbeing of carers.

As part of the strategy, an action plan will be developed to deliver these priorities, whilst supporting diversity and inclusion, partnership working, resident engagement and utilising digital technology wherever possible.

To read the strategy, and to find out more about health and wellbeing services in Woking, visit www.woking.gov.uk/living-well

Woking Borough Council
Living Well in Woking –
a Health and Wellbeing
Strategy 2021-2031



Get ready to nominate your local sporting heroes

It's been a fantastic year for sport. England's Euro 2020 success buoyed us all after lockdown, Wimbledon made a welcomed return to our TV screens, and hundreds of GB hopefuls competed in the Tokyo 2020 Olympic and Paralympic Games bringing home our biggest ever medal haul.



If that wasn't enough, Emma Raducanu's surprise US Open victory catapulted her into the history books as the first British female to win a Grand Slam singles title in 44 years, and the first qualifier to win a tennis major.

Whether track or field, pitch or putting green, sport is back and we want to hear about Woking's personal bests this season.

Nominations for the 2021 Sport Woking Awards open on Monday 1 November and this year there are seven categories to reflect the borough's diverse and flourishing sports scene.

- Sports Personality of the Year
- Young Sports Personality of the Year
- Inclusive Sports Award

- Outstanding Service to Sport
- Community Contribution of the Year
- Team of the Year
- Health and Wellbeing Champion

Nominations close at 5pm, Tuesday 30 November.

Award winners will be notified during December and announced in the Woking News and Mail in January 2022.

Terms and conditions apply. To review the award criteria and make a nomination, visit www.woking.gov.uk/sportsawards. For further information, email sports.services@woking.gov.uk or call **01483 743804**.



The Eastwood Leisure Centre is now open

The new state-of-the-art leisure centre in Sheerwater opened its doors to the public at the start of October. Take a look around and sign up now to take advantage of a range of introductory offers.

The new Eastwood Leisure Centre is a £26m investment by Woking Borough Council into improving the health and wellbeing of residents in Sheerwater.

The state-of-the-art facility, which includes a 25m swimming pool, teaching pool, fitness suite, group cycling studio, two multi-purpose studios and a flood-lit 3G football pitch, is now open to the public seven days a week.

Operated by Freedom Leisure, the Eastwood Leisure Centre is open 7am and 10pm on weekdays and between 7am and 6pm at the weekends.

Visitors can enjoy daily access to the pool, sauna, steam room and ground floor café serving Costa coffee, or become a member to benefit from unlimited access to the gym and group exercise classes. The expanding programme of classes already includes body pump, body balance, yoga, pilates, clubbercise, barre fusion and spinning, with more still to come.

A community hub

The Eastwood Leisure Centre is a shared community use facility. It took just under two years to build and is the first phase of the wider Sheerwater Regeneration Project to be delivered.

Bishop David Brown School has dedicated use of the



sports hall, 3G pitch and grass pitches on school days between the hours of 9am and 6pm; and dedicated use of the pools at set times, which is agreed a term in advance.

During opening hours, the gym, studios and ground floor café are available to everyone.

Leader of Woking Borough Council, Cllr Ayesha Azad, said: “When we started the Sheerwater Regeneration Project we made a promise to Sheerwater residents that we would build the leisure facilities first. We have fulfilled that commitment, on time and on budget, and I’m absolutely blown away by the level of detail and quality of these facilities.

“Our aim was to develop a community hub and I would like to thank everyone who inputted into the design of the leisure centre, which we believe is our most inclusive facility to date, capable of supporting the diverse range of need that exists within Sheerwater.”

With two Changing Places changing rooms; a pool with moveable floor, hoist and privacy blinds; accessible toilets on every level; and changing rooms



Five-court sports hall



Accessible features and facilities throughout the building



Ground floor café



Group cycling studio

that can be partitioned for different groups and activities, the Eastwood Leisure Centre is by far the borough's most accessible and inclusive sports facility.

With almost a quarter of adults and a third of children now doing less than 30 minutes of moderate intensity physical activity a week, the Eastwood Leisure Centre offers women only swimming, adult swimming lessons and a range of low-impact exercise classes to build confidence and encourage people to start being more active.

Cllr Colin Kemp, Woking Borough Council's Portfolio Holder for Leisure, said: "We are committed to improving the health and wellbeing of Woking's residents and helping people all ages and abilities to achieve healthier lifestyles through the provision of high quality facilities.

"This is our third leisure centre in Woking and the second adjoining to a high school. Please make the most of them. They are for you, and each offers a range of activities and concessions to suit everyone."

To find out more about memberships, exercise classes, court hire, swimming lessons and more, drop in to the centre and have a chat with a member of the Freedom Leisure team, or go to www.freedom-leisure.co.uk/Eastwood

Woking Leisure Centre, Woking Pool in the Park and Woking Sportsbox members can upgrade to a



65 station gym with the latest Technogym equipment

Freedom Leisure Connected Membership to access the new facilities at Eastwood Leisure Centre.

Did you know?

Incorporated in the footprint of the main leisure centre building is a brand new canteen and dining hall accessible only to Bishop David Brown School. The school's original canteen block was demolished to make way for the new Eastwood Leisure Centre car park.

Eastwood Leisure Centre
Albert Drive, Woking GU21 5RF
01932 960994
www.freedom-leisure.co.uk/eastwood
@eastwoodleisurecentre



Car park with disabled parking bays, electric vehicle charging points and bicycle storage

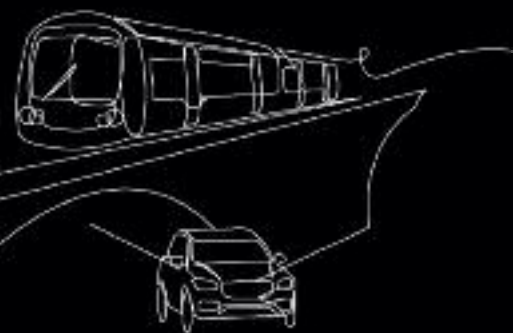


Teaching pool with a moveable floor, hoist and privacy blinds



25 metre pool with viewing gallery, steam room and sauna

VICTORIA ARCH WIDENING SCHEME UPDATE



The scheme, which commenced last summer, is a multi-million pound project managed in partnership by Woking Borough Council, Surrey County Council, Network Rail and Homes England.

Whilst the demolition of the Triangle site continues, Woking Borough Council has been investigating access options for the Day Aggregates yard.

WHY THE COUNCIL IS CONSIDERING RELOCATING THE ACCESS ROAD

Currently, the Day Aggregates access road is situated on a busy stretch of the A320. This location requires all site vehicles to enter from the south and to exit onto the A320 in the northbound direction.

This causes regular traffic congestion, damage to the pedestrian footways and the central crossing. More seriously, this unsatisfactory arrangement significantly increases the risk of side impact accidents to pedestrians, cyclists and other road users.

To allow for the construction of a new railway bridge and widened highway with increased height capacity, the existing level of Guildford Road (under Victoria Arch) must be lowered by 1.2 metres. This involves significant excavation works and hugely impacts on major underground utility services, such as telephone, internet, gas, water, etc.

To complete this work, the Council needs to close the current access road which will create a temporary access via Bradfield Close, just off York Road. This will include traffic restrictions to ensure HGVs using



this access only do so via the Guildford Road junction. This proposal will be submitted to the local planning authority over the coming months.

In addition, and after careful review of the scheme's pre-construction technical reports, safety concerns and traffic congestion along the A320, it was found that all these issues create challenges for retaining the current access. Therefore, a second proposal will be submitted to the planning authority to seek permission for a permanent access to York Road via Bradfield Close.



SUPPORTING
WOKING'S
GROWTH



WE ARE REVITALISING
YOUR TRAVEL NETWORK





PRE-PLANNING ENGAGEMENT AND CONSIDERATIONS

In July, the Council wrote to over 500 households to advise them of the relocation proposals. This engagement was targeted at residents who may be directly affected by the future proposals and requested their initial feedback on the plans.

Taking into account resident feedback, the project team is also assessing the wider planning impact on the surrounding residential streets. Considerations include:

- restricting HGV vehicles using the surrounding residential roads

- a review of on-street parking
- road resurfacing requirements.

The planning applications will be available for review and comment from members of the public during the statutory public consultation period, which will be managed and publicised by the local planning authority.

For more information about the proposals, visit www.woking.gov.uk/dayaggregatesaccess

ABOUT THE VICTORIA ARCH WIDENING SCHEME

The £115 million Victoria Arch widening scheme, mainly funded by central government, will deliver key strategic outcomes for Woking's residents, businesses and visitors.

The scheme offers a once-in-a-generation opportunity to enhance the town centre's main traffic pinch-point through highway reconfiguration works. Its delivery is complex and linked to the Council's commitment to implement a Town Centre Masterplan, which will identify land for new homes. The relocation of the existing Day Aggregates access road also impacts on the Masterplan. You can read about the Town Centre Masterplan on page 23.

When complete, the scheme will provide additional road capacity, reduced air pollution, safer access for pedestrian and cycle journeys, and more reliable bus journeys. It will significantly contribute to Woking Borough Council's long-term sustainable



transport measures, unlock town centre sites for much-needed housing and strengthen Woking's vibrant business economy.

In addition, the scheme offers Network Rail with a rare opportunity to replace the ageing Victoria Arch railway bridge, renewing the railway infrastructure in Woking which are essential for the vitality and sustainability of the rail network.

MORE INFORMATION

For more information about the Victoria Arch scheme, including how to sign up to receive project update emails, visit www.woking.gov.uk/victoriaarch



WE ARE UNLOCKING SPACE FOR NEW HOMES

PROJECT DELIVERY PARTNERS



#WEAREWOKING

TOGETHER

This year we can be with friends and family, so let's make the festive season extra special! From fantastic shopping to a great choice of things to see and do, Woking has everything you need to celebrate the perfect Christmas.

SKATING ON ICE!

Join us on ice at Woking Shopping this Christmas season to experience Surrey's newest ice rink! Our ice rink will be open daily in the new Victoria Square at the end of Commercial Way from Saturday 20 November right through to Sunday 9 January.

So whether it's a perfect day out for all the family that you're looking for, or a special treat after a long day of Christmas shopping, our ice rink is sure to bring a smile and a lot of wintery fun to your day!



SANTA'S GROTTTO

No Christmas is quite complete without a visit to Santa! So why not join us this festive season in Central Square, Wolsey Place for your chance to meet the big man in red himself and his cheeky elves in our Wintery grotto. The grotto will be open from Saturday 20 November to Friday 24 December.

To find out more about skating on ice or Santa's Grotto, visit www.woking-shopping.co.uk

IS IT TOO EARLY TO TALK ABOUT PANTO?

Oh no it isn't! This Christmas will be made all the more festive with the extra special Snow White and the Seven Dwarfs pantomime at the New Victoria Theatre.

Starring the uber-talented Gok Wan as The Man in the Mirror, brilliant actress Harriet Thorpe as the Wicked Queen and hilarious comedian Aaron James as Muddles plus many more talented people.

There will be singing, dancing, a live band, stunning scenery, spectacular costumes and a laugh a minute at the New Victoria Theatre this Christmas.

The show will be running from 4 December 2021 to 2 January 2022 and tickets start from just £13 with offers for groups, under 16s, schools and seniors.

Book your tickets now at www.atgtickets.com/woking or you won't be able to look yourself in the mirror!

GOK WAN
HARRIET THORPE, AARON JAMES



SAT 4 DEC 2021 - SUN 2 JAN 2022

CHRISTMAS IS COMING BACK TO BYFLEET

This winter will see the welcome return of two seasonal events in Byfleet, both located on Plough Green.

The first is on Thursday 18 November from 6.30pm, which sees the switching on of Byfleet's Christmas lights at 7pm. There will be live festive music from the 'Ukeaholics', mulled wine and mince pies - and of course Father Christmas will be in attendance!

On Saturday 4 December is the return of the Byfleet Village Christmas Market, held between 10am and 4pm it features a variety of stalls selling Christmas gifts and goods. There will be refreshments and live jazz from the 'Bob Webb Trio'.

In addition, the Mayor of Woking, Cllr Liam Lyons, will open both events. Further information is available by emailing info.byfleetAG@gmail.com and on the Byfleet Amenities Group Facebook page.



WELCOME TO THE GORDON RAMSAY ACADEMY!

Gordon is incredibly excited to share his passion for fantastic food with hands-on cooking classes to help you grow your confidence in the kitchen this festive season, whatever your level of experience.

The Academy is now open in Woking Town Centre and we are ready for you to join us in the kitchen for something delicious.

There's loads of amazing classes for you to book from baking to sushi or steak masterclasses, there is something here for everyone. Whether you've got a full day to spare or just an evening to drop in, classes range from 90 minutes to full day experiences, where you'll be guided by our talented chefs to build on your existing skills, or create brand new ones.

I've learnt so much working with the best chefs and restaurants around the world, but also from just eating and enjoying good food every day with family and friends. You never stop learning, and that's what makes cooking so exciting and so much fun.

To book your classes, or simply to find out more, visit www.gordonramsayacademy.com



CHARITY FUN RUN RETURNS!

Join this family friendly event on Sunday 5 December at Woking Leisure Centre. The route starts at Woking Leisure Centre and goes around Woking Park.

Start with a festive warm up before setting off to run, jog or walk, choosing your own distance by taking on as many loops of the course as you like.

All those taking part will receive a medal to celebrate their achievement.

There will also be a Christmas Fayre in Woking Leisure Centre which is open to all, with Christmas crafts, games, face painting, refreshments and lots more to kick off your Christmas in style.

Prefer to stay virtual? You can still join in the fun and earn your medal virtually. Visit www.wsbhopsices.co.uk/santafunrun for more information.

Taking part in the Santa Fun Run will help fund specialist care and support to over 2,000 patients and their families each year across North West Surrey.



Comfortable and safe independent living 'Hales' older residents

Introducing Hale End Court, Old Woking's latest extra care housing development featuring comfortable and modern apartments offering flexible, care-based, independent living for older people.



Funded by Woking Borough Council and opened in October 2021, Hale End Court in Old Woking features one and two bedroom self-contained apartments to assist elderly and frail individuals and couples live independently in a comfortable, homely environment.

Extra care housing is specialist housing designed for older people. It is similar to sheltered housing but also offers help with personal care and household chores. Extra care can be very suitable for residents with higher or changeable care needs whilst still offering an independent living environment.

Situated on the site of a former car dealership, the four-storey residence, provides 45 one and three two bedroom self-contained apartments. Each private apartment has a modern kitchen containing washing machine, slim line dishwasher, contemporary wet room and generous living space. Meanwhile, all the apartments are adapted and appropriately modified for secure living with devices such as door buzzers, accessible bathrooms and emergency pull chords fitted as standard.

Hale End Court is more than just a housing solution. It's a community with communal dining room, lounge and dedicated café provide ample opportunities for residents to socialise.

Patio doors open out onto a communal courtyard and a first floor terrace, providing plenty of opportunity for recreational activities. A hair salon adds to the creature comforts available on-site, as do the mobility scooter charging ports.

In addition, a support team deliver an exciting programme of events and activities providing daily entertainment, as well as supporting residents with their health and social needs. Meanwhile, a dedicated care team will aid residents with their more practical needs, such as liaising with GP surgeries and health care providers.



For peace of mind in an emergency, help is available at the push of a button, as each flat is linked to Woking Borough Council's community alarm service, Careline. Emergency pull cords are fitted in each apartment and residents are provided with a personal pendant alarm allowing them to get help 24 hours a day, seven days a week.

Residents also benefit from on-site care providers who can provide comprehensive care packages to suit individual needs.

Cllr Debbie Harlow, Woking Borough Council's Portfolio Holder for Housing, said: "With the average age of the population rising steadily, the creation of independent living facilities such as Hale End Court is absolutely vital to allow more borough residents to live as independently as possible, for as long as possible. These fully equipped, modern, yet affordable, dwellings will provide safe and comfortable homes for some of our most vulnerable residents, with the additional peace of mind that help is never far away should they require it."

Hale End Court has been fully funded by Woking Borough Council to support older residents to continue to live independently. It is the tenth supported living facility in the Council's portfolio of affordable independent living homes

How to apply

There are still a small number of flats available at Hale End Court, if you are interested in applying, please contact the Independent Living and Extra Care Manager on **01483 743922** or email haleendcourt.enquiries@woking.gov.uk

For more information about sheltered and support housing in Woking, please visit www.woking.gov.uk/housing/sheltered-housing-and-supported-living



MONEY



MATTERS

WE PROVIDE SERVICES TO OVER 100

£111.3M

COST OF PROVIDING SERVICES

INCOME RECEIVED FROM COMMERCIAL PROPERTIES

£18.2M

£83.3M INCOME FROM COUNCIL TAX

£10.1M WOKING BOROUGH COUNCIL

£11.1M SURREY POLICE

£62.1M SURREY COUNTY COUNCIL

SAVINGS IDENTIFIED

£649K

174

MILLION INVESTED IN THE VICTORIA SQUARE DEVELOPMENT



33

MILLION SHEERWATER REGENERATION PROJECT



20

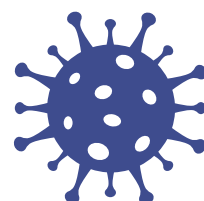
MILLION

ON NEW COUNCIL HOUSING AND IMPROVEMENTS TO HOUSING STOCK



7.5

MILLION IMPACT OF CORONAVIRUS ON COUNCIL FINANCES COVERED BY ONE-OFF SAVINGS AND INCOME



21.4 MILLION

IN GOVERNMENT GRANTS AWARDED TO SUPPORT LOCAL BUSINESSES DURING PANDEMIC

118K

IN GOVERNMENT GRANTS AWARDED TO SUPPORT ISOLATING RESIDENTS DURING PANDEMIC



Woking Borough Council has published its draft accounts for 2020/21. The accounts include details of the Council's income and expenditure between 1 April 2020 and 31 March 2021 and will be approved by Council following an audit which is scheduled to begin later in the year. Key information is highlighted in the infographic below.

If you have any comments or questions about the information published below, please email financialmanagement@woking.gov.uk
 This infographic is a visual summary of the full Statement of Accounts. The accounts are available to view by visiting www.woking.gov.uk



000

RESIDENTS

TOTAL VALUE OF ASSETS HELD
£1,882M
 OUR TOTAL BORROWING
£1,681M

TOTAL RESERVES
£37M

2.78%
 AVERAGE INTEREST WE PAY ON OUR LOANS

INVESTMENTS MADE IN BOROUGH
£349M
£18M CAPITAL GRANT, £325M BORROWING, £2M CAPITAL RECEIPTS, £4 RESERVES



22M
 HOUSING, SOCIAL SERVICES AND COMMUNITY SUPPORT

3M
 REFUSE

CORPORATE & DEMOCRATIC PROCESSES
7M



8M
 ENVIRONMENTAL MANAGEMENT

4M
 PARKING

3M PUBLIC SAFETY

9M LOCAL ECONOMY

6M
 RECREATION AND CULTURE

Outstanding members of the community honoured

Outstanding members of Woking's community have been honoured for their achievements and services to the community at Mayor's Civic Reception, hosted by the Mayor of Woking, Cllr Liam Lyons.

The civic awards, which due to Coronavirus recognised the dedication of Woking residents during the mayoral years 2019/2020 and 2020/2021, were presented by former Mayor of Woking, Mrs Beryl Hunwicks. Each winner of the awards, sponsored by The Ambassadors Theatre Group, were presented with a glass trophy, certificate, and vouchers including Nova Cinema tickets.

Speaking about the awards, Cllr Liam Lyons, Mayor of Woking, said: "On behalf of Beryl Hunwicks, former Mayor of Woking, and myself, it has been an honour to host and present awards to these exemplary members of our community. In different ways, they have consistently gone above and beyond what is expected of them in their school, work or private lives. They are a true inspiration to us all and excellent role models for other young people in their peer groups."

Eminent Citizens

Each year, the Mayor of Woking selects a resident who has provided an 'eminent service' to the community and appoints them the Eminent Citizen for that mayoral year.

Former Mayor of Woking from 2019 to 2021, Mrs Beryl Hunwicks, selected the following local citizens.



Alice Potter – Eminent Citizen 2019/2020

Alice was appointed for her outstanding contribution to Surrey Police. Over many years, she has been a visitor to custody suite clients and provided chaplaincy work to the Christian Police Association.

Paul Rimmer – Eminent Citizen 2020/2021

Paul was appointed following 31 years of outstanding work for Horsell Common Preservation Society, including working with partners to develop Heather Farm and Woking's Muslim Burial Ground and Peace Garden.



Young People's Civic Awards Scheme

Celebrating its 25th year, the Young People's Civic Awards Scheme aims to reward young people who make an outstanding contribution to the community whose work or achievements may not normally be recognised.

The judging panel included representatives from Woking Borough Council, Woking Youth Council, Surrey Police, Sport Woking, and the voluntary sector.

2020 winners

Samuel Fox – Outstanding Contribution to the Community

Samuel is a dedicated musician who has given selflessly to Woking College's music department. His performing ability has also brought a great deal of pleasure to the wider community, including playing with Woking High School's Wind Band as principal percussionist and performing at many local fetes and fairs. Keen to inspire the next generation, Samuel also teaches drums to a number of young children.



In the face of personal adversity, following the sudden death of his beloved father Colin, Samuel demonstrated his determined spirit and pressed ahead with Duke of Edinburgh Gold Award expeditions to Brecon Beacons and Dartmoor, taking on the role of team leader.

Megan Hall – Triumph over Adversity

Megan is a compassionate young carer to her father, who also manages her own special educational needs and disabilities. In her spare time, she attends Woking Young Carers' Group which provides advice, friendship and support to local young carers.



Despite Megan's medical issues and with the support of her peers, Megan completed her Bronze Duke of Edinburgh Award in 2019.

Lilly Poulter and Jai Kothari – joint winners of Outstanding Achievement

Lilly is an outstanding Woking High School student who represents her class on the school council and is an active role model for other students coping with Dyslexia.

Outside of school, Lilly is a dedicated volunteer at Woking Gymnastics Club. In 2020, she passed her junior coaching exams and is a registered junior coach at the club. Prior to this achievement, she won 'Recreational General Gymnast of the Year' and 'South East Regional Young Leader Award' in 2018.

Jai is an exceptional young chess player who won over 20 junior tournaments in 2019, often competing against young people up to four years older than himself.



In 2020, Jai was selected by the English Chess Federation to represent England in Greece for the World Cadets/Youth Rapid/Blitz Chess Championship. He also plays for the Surrey County Chess Association squad and Surrey Border League.

2021 winners



Keshav Raju Meesariganda – Outstanding Contribution to the Community

Keshav is an outstanding Goldsworth Primary School student who, inspired by the efforts of Captain Sir Tom Moore, organised and undertook his own fundraising challenge to support the NHS heroes fighting Coronavirus.

Despite busy days of home learning during lockdown, Keshav and his friend Nikki cycled 40 laps of their school car park every evening until they had each clocked up 500 laps. Their efforts raised an impressive £340 for the NHS Charities Together.

Tyler Hankin – Triumph over Adversity

Tyler is a hard working Woking College student and dedicated young carer for her mother and sister.



Jamie, her sister, has a very rare condition called McCune Albright Syndrome. To raise awareness, Tyler has become an ambassador for her sister and the challenges of her condition, including eloquently delivering a speech on the topic in a school assembly.

Compassionate and determined, Tyler always pushes herself to fulfil her responsibilities both at college and at home.

Imaan Kashim – Outstanding Achievement

Imaan is a talented and dedicated classical violinist and guitarist. She has attained many outstanding achievements for her musical ability, including studying violin at the Royal College of Music, being a member of the Royal Concertgebouw Orchestra's European Youth Orchestra, and performing at many venues including appearing on Britain's Got Talent playing with the Chineke! Junior Orchestra.



Nominations for the 2022 awards

Do you know an inspirational young person who deserves to be nominated for their achievements or support to the local community?

The annual civic scheme is open to all children and young people, up to the age of 18, who live or attend school or college in the borough, and includes the following three categories:

- **Outstanding Contribution to the Community** – includes work in areas such as helping older or disabled people, working with children, fundraising for good causes or getting involved with voluntary organisations.
- **Triumph Over Adversity** – includes endurance and bravery, such as overcoming a disability or helping a parent or family member with a disability.
- **Outstanding Achievement** – covers excellence in many fields: sport, music, drama, visual arts and particularly less academic subjects that are not normally recognised or rewarded.

The application form can be downloaded at www.woking.gov.uk/ypcivicawards or call Woking Borough Council's Democratic Services team on **01483 755 855**.



Getting to know your local policing team

It's important that the community know the local policing team and who we are as people away from the job. We might wear a uniform and keep the Queen's peace (the historic role of policing) but we are all human. Here's just a few of the team helping to keep you safe in Woking.

PCSO Naz Svyntakh

"I have been working with Surrey Police since 2003. I have been in service for 18 years, though it doesn't feel that long - I still clearly remember my first day!



"I joined Surrey Police to make a difference, by bringing my local knowledge, my background and my bilingual language skills to the role. I believe that I have been able to make a positive impact in this way. You really feel like you are part of a family when working with police colleagues.

"If I had one message for the public of Woking, it would be 'treat each other with respect and look after each other honestly'. It has been an absolute pleasure working for Surrey Police and serving the community of Woking, and I hope to continue for years to come!"

PC Tom Hinch

"I have been working in Woking for the past year and really enjoy the variety of policing you experience. In quite a small area there are so many different and varied challenges, types of crime and encounters you come across.



"I am a Neighbourhood Specialist Officer which means I'm able to find issues which matter to local people and take a longer term approach to solving them. It's about going beyond the initial response and making lasting change.

"Neighbourhood policing has changed a lot since the 'officer on every street corner approach' of the past. We're smarter about what we do now however we're just as committed to working with residents to create a safer borough.

"When I'm not at work I'm usually doing something sport related. I'm a keen cricketer, playing every week in the summer when I can and I'm also an Exeter City football fan so enjoy trekking across the country to watch them play."

Sgt Sarah Wentworth

"I have been with Surrey Police for the last nine years, Seven and a half of these were in Woking. I love policing Woking as every day is different with a great and diverse community to support in my role.



"I am a keen footballer, support Aston Villa and represented the Great British Women's Police football team at the European Championship in Prague. I see sport as a key engagement tool which we demonstrated recently with the Kick Off @ 3 tournament we held at Woking Sportsbox.

"My role is to lead and support our team in tackling crime and neighbourhood issues which have a detrimental impact on our community. I work with our fantastic partner agencies in Woking to solve these longer term problems."

So next time you see Naz, Tom or Sarah out on the beat, why not stop and say hello? To stay up-to date with the team's activities in Woking, follow [@WokingBeat](#) on Twitter or [@WokingPolice](#) on Facebook.

Residents: Have your say

Earlier this year, Woking Borough Council committed to establishing effective, two-way dialogue with residents and key stakeholders, giving a voice to all members of the community.

As a result, the Council relaunched Woking Residents' Panel consisting of over 750 engaged local residents and created an online civic space, known as Woking Community Forum, where all residents can have their say on the Council's activities.

The Community Forum has been used to publish and seek views on the Council's draft Housing Strategy and Economic Development Action Plan and more recently two significant consultations have commenced that will help shape the future of the borough – a Masterplan for Woking Town Centre and the Council's corporate priorities and financial budgeting.

Woking Town Centre Masterplan

The Masterplan will seek to establish an overarching vision for Woking Town Centre that will enable sustainable development including new homes, a thriving business and retail destination as well as strengthening Woking as a cultural, recreational and community destination.

It will provide a long-term vision of what Woking could look like by 2030 and beyond by working with residents and key stakeholders.

Informed by robust evidence and wide community engagement, the Masterplan will set out detailed standards and principles to guide the day-to-day decisions to achieve the vision, such as building height and density.

To begin the process, during late summer a series of virtual workshops were held with Woking Residents' Panel, who gave their views on the current development of Woking Town Centre and their aspirations for the future.

In addition, face-to-face meetings have been conducted with key employers within the borough to understand their future needs and wants for a prosperous future.

Once this phase of informal engagement is complete, the Council will embark on drafting a

Masterplan which will take into account the initial feedback received.

It is anticipated that the draft Masterplan will be presented to Council late spring 2022, before a formal in-depth and wide ranging public consultation will begin later next year.

Once the formal phase of consultation is complete, all comments received will be reviewed and the draft Masterplan updated before it is presented to Council for adoption in 2022.

More information on the Masterplanning process will be published in future editions of The Woking Magazine.

Corporate priorities and budgeting consultation

As part of establishing an effective dialogue with residents, a comprehensive consultation and engagement programme has begun to help local communities feel better informed, whilst assisting the Council better understand the issues and key priorities of local communities.

As part of the process, a series of in-person roadshows are being held during October and November 2021 at venues across the borough, led by Leader of Woking Borough Council, Cllr Ayesha Azad, and Chief Executive, Julie Fisher.

Roadshows are open to all residents and stakeholders. Dates and booking details are available by visiting www.communityforum.woking.gov.uk

Complementing the roadshows is a questionnaire asking residents for their views on the Council's future corporate plan and priorities. Whilst anyone can complete the questionnaire, 3,000 copies have been sent to randomly selected households across the borough. If you've received a copy, do take the time to complete and return it. In addition, a separate consultation on the Council's financial budgeting is also underway.

Feedback gathered through the roadshows and questionnaire will assist the Council to develop a new five year corporate plan and key priorities for the borough.

For information on the Masterplan and corporate priorities consultation, please visit www.communityforum.woking.gov.uk

Woking's hidden jewel

Woking is a diverse, multi-cultural, multi-ethnic and multi-faith community. More than ever, understanding between different cultures, ethnicities and faith communities is essential. Here we find out about the work of local charity, Woking People of Faith.

Promoting understanding amongst the borough's various faith groups was why Woking Borough Council helped establish Woking People of Faith (WPoF) around 15 years ago. Under the motto 'Diverse Beliefs: United Action', the charity's purpose is to promote community and religious harmony.

Key aims and objectives

- Promote knowledge, mutual understanding and respect of the beliefs and practices of different faiths.
- Advance the education and understanding of different beliefs including an awareness of their distinctive features and their common ground.
- Promote good relations between people of different faiths.

Its members include most of the faith communities in the Woking area, whose representatives explain more about its work.

"Why does interfaith work matter? Prejudice is the ill-founded perception of a grouping. Once you know people as individuals, prejudices fall away. So interfaith work weakens prejudice, not least because it rapidly becomes apparent that the ethical values which unite faith communities are more significant than the theological differences which divide them." Philip Goldenberg (Jewish).



"There may be reluctance from some people to engage with people of other faiths, maybe there is a fear of proselytising or having their beliefs questioned. When we are firmly rooted in our own beliefs, we are in a better position to engage with people of other faiths. I have also found, through

interfaith dialogue, my own faith has been enriched." Kawther Hashmi (Muslim).



"At the heart of good interfaith relations is dialogue between real people. This is about mutual respect and mutual listening. It is entering the world of the other and engaging in genuine conversations about faith. This builds trust and creates possibilities of working together in authentic ways.

We listen in order to understand and we understand in order to make a difference. And such dialogue is at the heart of Woking People of Faith." Rev Phil Simpson (Christian)

"Whether working locally, regionally, nationally or internationally, the object of interfaith is the same - to get to know other human beings and respect that we are full of positive similarities, while the diversity of beliefs and cultures is part of the beauty of humanity. The more involved we become in interfaith work, the more we recognise that 'the Earth is but one country and Mankind its citizens'" Simon Trick (Baha'i).



To support the ethos of the charity, WPoF host many varied events and activities including topical interfaith discussions; online international cooking lessons; football tournament; environmental work with Horsell Common Preservation Society; ladies' coffee mornings and discussions; and Faith in Action – a series of interviews with people of different faiths where they explain how their faith influences their life and work.

All these events, in their different contexts, reflect the learning and appreciation in which people of different backgrounds participate together and provide opportunities to remove the barriers of prejudice and misunderstanding which so often divide communities.

For more information about Woking People of Faith, including how to get involved and details of forthcoming events, visit www.wpof.org.uk

New burial site and wetland area within Brookwood Cemetery

As part of the ongoing restoration of Brookwood Cemetery, 7,000 cubic metres of contaminated land has been remediated to create a beautiful new burial site and wetland area.

The new five and half acre site will be used predominantly for Muslim burials as other sites begin to reach capacity.

This has created space for another 480 individual burial plots spread across two grassland areas which are linked by a raised boardwalk and complete with contemplation spots and benches.

It also features new planting and a number of unusual ornamental tree and shrub species that resonate with the cemetery's Victorian design, along with native shrubs and wildflower.

Ian Tomes, Woking Borough Council's Asset Manager, said: "It has taken us three years to remediate the land which was used by the previous owners as an illegal tip site. With the help of a range of specialist contractors, we've been able to screen the material on site and use it to form two grass covered mounds, the tops of which will be used for internments.

"The boardwalk design also takes into account the site's fluctuating water levels, and we've added marginal aquatic planting to enhance the appearance of the wetland."

As well as the provision of good quality grave space and environmental improvements, the £800,000 project also capitalised on some of the cemetery's historical features, supporting the council's aim of transforming Brookwood Cemetery into a major heritage destination.

Woking Borough Council's Lead Member for Brookwood Cemetery, Cllr Kevin Davis, said: "In July 2020, the Council approved the Brookwood Cemetery Masterplan and Experience Plan which set out a number of broad policies by which the site will be managed and developed in the future.



The Mayor of Woking, Cllr Liam Lyons, receiving a tour of the new burial area and wetland led by Brookwood Cemetery Manager, Avril Kirby.

"They support a vision of a sustainable working cemetery leading the way in heritage conservation which other sites will look to. I think these latest works are a really good example of how we intend to improve the site while also retaining and enhancing all the special features that make Brookwood Cemetery so unique."

For more information about the new burial area, please visit www.brookwoodcemetery.com



7,000 cubic metres of material was screened on site



Raised boardwalk and contemplation spot



Discover...

Woking's Art Trail

Woking is proud of its public art, and pieces are located across the borough, including in Woking Park, Mayford, Westfield, Horsell and Byfleet. Please enjoy this walk around these iconic pieces of public art whilst taking a stroll around Woking Town Centre.

Key Facts

Start: Bedser Bridge, between Brewery Road and Victoria Way.

Finish: Wells Plaza, Chobham Road

Duration: 30 minutes

Type of Walk: Easy, generally very flat, and so good for wheelchairs and pushchairs.

The route

1. Standing on Bedser Bridge spanning the Basingstoke Canal, you will see the bronze figures of Eric and Sir Alec Bedser enjoying a game of cricket. **The Bedser Twins** by artist Allan Sly celebrate the twins from Horsell, who joined Surrey County Cricket Club at the age of 19. As you cross the road towards the town centre, glance up and to your left you will see the ball from their game embedded in the wall of the Civic Offices.



2. Cross Victoria Way using the pedestrian crossing and continue ahead into Gloucester Square where you will find the **Town Centre swift and bat sign** designed by 51 architecture. It incorporates nesting chambers for both swifts and bats in its upper section. The middle section features finger-post style arms showing the way to Woking's twinned towns, all atop a specially engraved, conical stone base charting the route of migrating swifts.



Discover the borough's rich public art heritage by visiting our interactive map. Simply scan the QR code with your mobile phone's camera to unearth the trail for yourself.



3. Also in Gloucester Square, you will see to your right, the **Orchid fountain**, designed by artist William Pye and to your left, '**Going Underground**', an Indiana limestone animal sculpture by Reece Ingram.

4. Head south, past Woking Library and as you reach Jubilee Square, you will see '**Winning Shot**', a bronze sculpture of Paralympian Ade Adepitan created by local artist, Christine Charlesworth.



5. As you head towards the war memorial, look to your right at the glass installation above Superdry. The design is of the **Jackmanii clematis** and the colours change peacefully.

6. Walking into the Peacocks Centre, directly ahead of you is **Woman (being looked at)**. This statue came to Woking as part of Face to Face: The figurative sculpture of Sean Henry. Sean is a Woking born artist.



7. Returning to Jubilee Square, with the war memorial to your left, cross Market Walk, and you will see the blue plaque commemorating Woking born, Status Quo's **Rick Parfitt**.





8. Head towards Christ Church. In front of you, you will see **Standing Man**, by Sean Henry. He attended Farnham School of Art (now University of Creative Arts) before studying in Bristol and becoming visiting artist

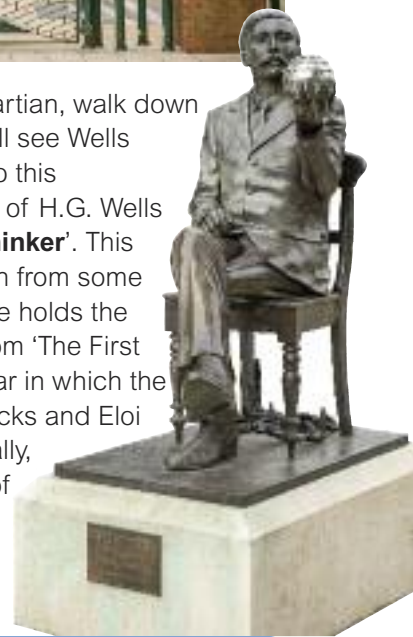
at the University of California. Sean's thought-provoking sculptures can also be found at Woking Train Station, Commercial Way and in the new Victoria Square development.

9. You will also see Woking's **Town Gate**. Designed by Alan Dawson, and built in 1992, the gate stands proudly at the entrance to Jubilee Square. The gate incorporates symbols of Woking's past, including 19th Century brick kilns, canal and railway, parts of the Borough's coat of arms and H. G. Wells novel, 'The War of the Worlds', represented through a silhouette of a Martian fighting machine.

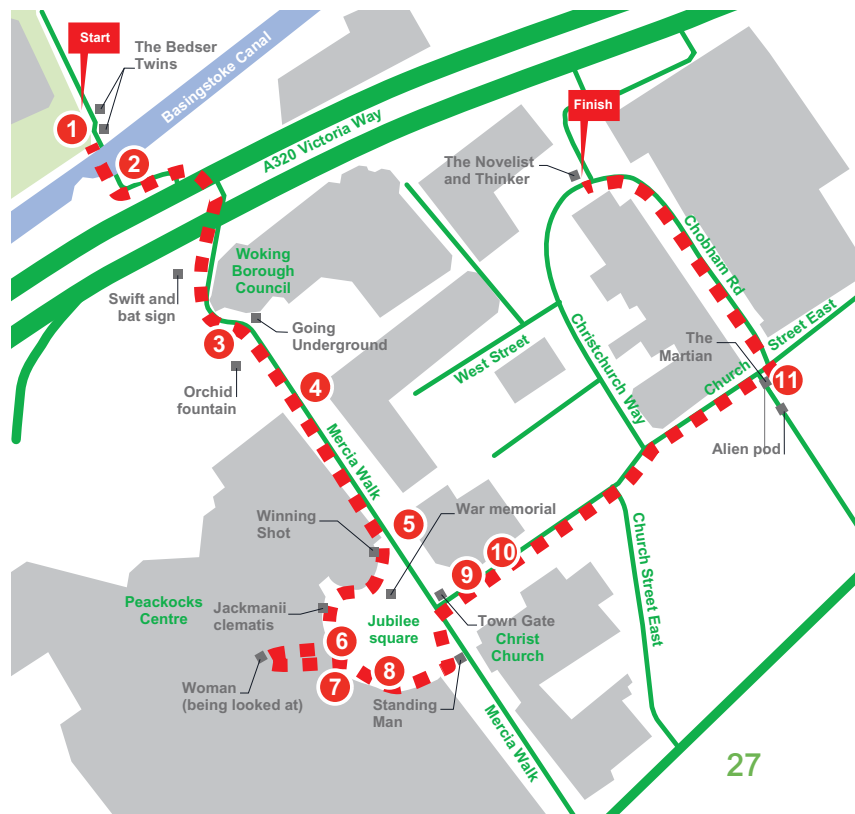
10. H.G. Wells is undoubtedly one of Woking's most famous residents. After heading through Town Gate onto Church Street East, you will come across Michael Condron's **'The Martian'**. Rising over seven metres towards the sky, The Martian is made from chrome electropolished stainless steel, the same process used to protect North Sea oil rigs from the elements. Alongside the figure is the 'alien pod', which reflects the cylinder described in his novel. You can visit the Martian's landing site on Horsell Common.



11. Turning away from The Martian, walk down Chobham Road where you will see Wells Plaza ahead of you. Central to this is Wesley Harland's sculpture of H.G. Wells himself, **'The Novelist and Thinker'**. This bronze statue takes inspiration from some of Wells stories. In his hand he holds the favorite-sphere spaceship from 'The First Men on the Moon' and the year in which the time traveller meets the Morlocks and Eloi from 'The Time Machine'. Finally, creeping around the bottom of his chair is an alien red weed from The War of the Worlds.



Did you enjoy Woking's art trail? Why not post your photos via our Instagram accounts, [@wokingcouncil](#) or [@WeAreWoking](#).





PLANET
WOKING

PLANET WOKING

In July this year, scientists published the State of the Climate report. This brought home the fact that climate change is happening now, and it's happening on our doorstep.

It is not some distant far off prospect. It highlighted that the UK is already undergoing disruptive climate change. The year 2020 was the third warmest, fifth wettest and eighth sunniest on record. In the last 30 years, the UK has become 0.9C warmer and 6% wetter.

What does this mean for Woking? The BBC and the Met Office have developed a clever online tool using climate projections that show what climate change looks like where you live. Check it out by searching "What will climate change look like near me?" on the BBC website. In Woking, the hottest summer day of the past 30 years was 36.1C. If global average temperatures increase 2C above pre-industrial levels, this could reach 38C. With a rise of 4C, it could be a scorching 43.2C. On the wettest

summer day of the past 30 years, 43mm of rain fell in the Woking area. At just a 2C rise, this could be a very soggy 52mm. The tool highlights how these extremes of heatwaves and heavy downpours could become more frequent and more intense. In turn, these patterns will impact upon our health and wellbeing and the ability of local wildlife and habitats to adapt.

This year is an important year for climate and ecological action. In November 2021, the UK will host a United Nations climate change conference known as COP26. Organisers will use this meeting to urge everyone to work together to avoid the worst impacts of climate change and to commit to reaching net zero carbon emissions as soon as possible with significant reductions by 2030.

Although the climate is changing, we can still make a difference and lessen the impact. Keep doing what you're doing to live a more sustainable life. Every positive action helps. Continue to ditch the car for short journeys. Change to a renewable energy provider. Grow your own veg. Repair, reuse and recycle...

For more ideas and inspiration, check out www.planetwoking.co.uk and subscribe to our email newsletters for all the latest local environmental news and events.

THERE IS NO PLANET B

Climate change is a global issue but one that can be tackled locally. By working together to make changes to the way we live, no matter how small, we can all make a difference to Planet Woking.

FOR MORE INFORMATION:

email: hello@planetwoking.co.uk or visit: www.planetwoking.co.uk

Lines of Beauty and Pleasures of Sight

Discover inspiring and diverse exhibitions for all to enjoy this summer at The Lightbox Gallery and Museum – it's more than just a gallery.

Lines of Beauty: Master Drawings from Chatsworth

Until 5 December 2021

A major exhibition of Old Master Drawings on loan from one of the UK's most significant collections is now on display at The Lightbox until 5 December 2021. Developed in partnership with Chatsworth House and Sheffield Museums - Lines of Beauty: Master Drawings from Chatsworth is the largest display of drawings from the collection in over 20 years and features works by renowned artists Leonardo da Vinci, Raphael, Dürer, Rembrandt, Rubens and more.



Raffaello Sanzio, called Raphael (1483 – 1520), Venus seated on clouds pointing downwards, Offset of a red chalk drawing © The Devonshire Collections. Reproduced by permission of Chatsworth Settlement Trustees

Bridget Riley: Pleasures of Sight

18 December 2021 – 10 April 2022

To mark Bridget Riley's 90th birthday The Lightbox presents Bridget Riley: Pleasures of Sight, an exhibition of work by one of the most important and influential British artists of the past century. Inspired by the visual sensations of the natural world, Bridget Riley has explored colour, structure and perception throughout a career spanning seven decades and is renowned for her black and white so called 'Op Art' works created in the 1960s.

Christmas Craft Fair

27 November, 10.30am to 5pm; 28 November 2021, 11am to 4pm

Merriment and joy for all at The Lightbox with this year's Christmas Craft Fair on 27 November and 28 November 2021. Discover an array of unique products from local designers, crafters, painters alongside tasty treats and festive music. Join florist Dawn of Poppies & Peonies for a Christmas Wreath Workshop to get well and truly into the Christmas spirit.



Lightbox Lates © The Lightbox

To find out more about the full Lightbox programme including all exhibitions, workshops and events, and becoming a member, please visit www.thelightbox.org.uk

Family fun

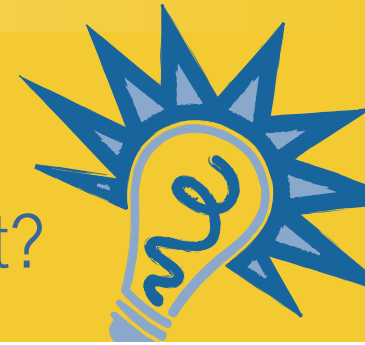
There are plenty of opportunities for families to explore their creativity and have fun together at The Lightbox during Halloween half term and Christmas holidays. Enjoy free drop-in workshops where you and your little one will create **Mini Ghosts (27 October, 1.30pm to 4pm)**, **Halloween Paper Lanterns (29 October, 1.30pm to 4pm)** and **Christmas Tree Table Decorations (22 December, 1.30pm to 4pm)**. There is also a wide range of bookable workshops for children and young people.

Other autumnal highlights include a fundraising event with renowned art historian **Andrew Graham-Dixon (23 November, 7pm to 8.30pm)** who will lead a private tour of Lines of Beauty and two special **Lightbox Lates – Ghost Stories with Marq English (28 October, 8pm to 9pm)** and a reading of **Jo and Sam find themselves in Woking by Olive & Stavros Theatre (25 November, 8pm to 9pm)**.



Painting for under 5s © The Lightbox

Why don't you... find job seeking support?



Steps2Work is a project supported by Woking Borough Council and the DWP and run by local charity, the Surrey Care Trust. It's designed to equip 18 to 24 year olds at particular risk of unemployment with the tools they need to find a job or training that is suitable and sustainable for them.

The project's personalised approach means that each young person is guided and supported with help and advice that meets their specific needs.

How does it work?

Young people in receipt of Universal Credit can be referred to the Steps2Work project by their Job Centre Work Coach.

Steps2Work offers free tailor-made courses and workshops such as bike maintenance, conservation and holistic therapies, as well as skills training to help boost confidence and employability. These are offered monthly, dependant on demand, and many will offer certificates to show to prospective employers. Learning and Employment Advisors can also provide information on apprenticeships and Kickstart opportunities.

Each young person will also be matched with a trained Steps2Work Volunteer Mentor. Mentors will provide 1:1 mentoring support to help motivate and inspire participants in the project to build a better future for themselves.

Where is the project based?

Steps2Work is based at Moorcroft Centre for the Community, Old School Place, Westfield GU22 9LY. Pop in to find out more or contact Chelcie Wreford – call **07874 867 275** or email **chelcie.wreford@surreycaretrust.org.uk**

“Try a new way of looking for a job. You'll have lots of help from Steps2Work. It really helps to know that you're not doing this alone and you can always get support from others.” Emilie, a Steps2Work participant who is now on a Kickstart work placement.



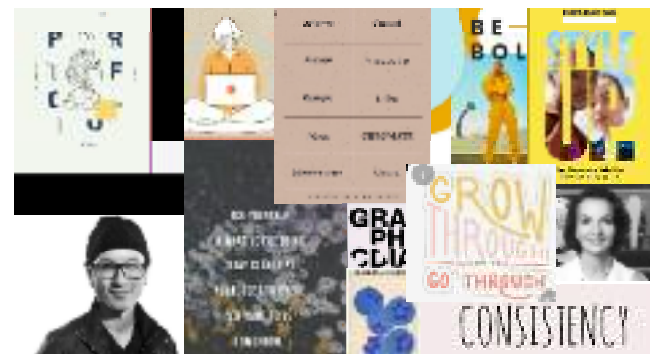
Get involved

As a community based charity, Surrey Care Trust welcomes the support of local people and businesses to create better opportunities for young people.

As a volunteer Steps2Work mentor, you could help a young person to build a brighter future for themselves. Businesses can also support the project by providing work placements, training or apprenticeships.

Top tips for your job search

- Research the company you want to work for so that you're prepared for questions at the interview.
- Get feedback on your CV and cover letters from people you trust.
- Think about what went well in previous interviews and use that to improve your confidence.
- Put yourself out there – tell friends, neighbours and family that you're looking for a job.
- Find free courses to upskill yourself and boost your CV.



For more information contact Catherine Leamon – email **cathy.leamon@surreycaretrust.org.uk** or call **07919 213904 / 07730 570305**.

Dementia
doesn't change...
My Achievements
My Curiosity
My feelings
My stories
My World



Discover our unique dementia care at Horsell Lodge Care Home

So many things define us as individuals, but dementia doesn't have to. We see the person behind it, and help them live the life they want, to the full. As the only care home group with its own accredited City and Guilds dementia training 'My World', innovative dementia friendly design, and support for the whole family, you can trust that we go further.

Our care
home is open
for viewings

Call us on freephone 0808 223 5401
caringhomes.org/horsell-lodge
Kettlewell Hill, Woking, Surrey GU21 4JA

Horsell Lodge



CARING HOMES



JACKSON-STOPS

Property experts since 1910



**THE NATIONAL
ESTATE AGENTS
LOCALS RECOMMEND**

Contact us to for a free valuation or any property advice.

01483 322135

woking@jackson-stops.co.uk