



The Future of Woking Town Centre

9 November 2018

Ray Morgan OBE
Chief Executive



2005-2006
Sustainable Energy



2007-2008
Promoting Sustainable
Communities Through
the Planning Process



2009-2009
Tackling Climate Change

Towards tomorrow today



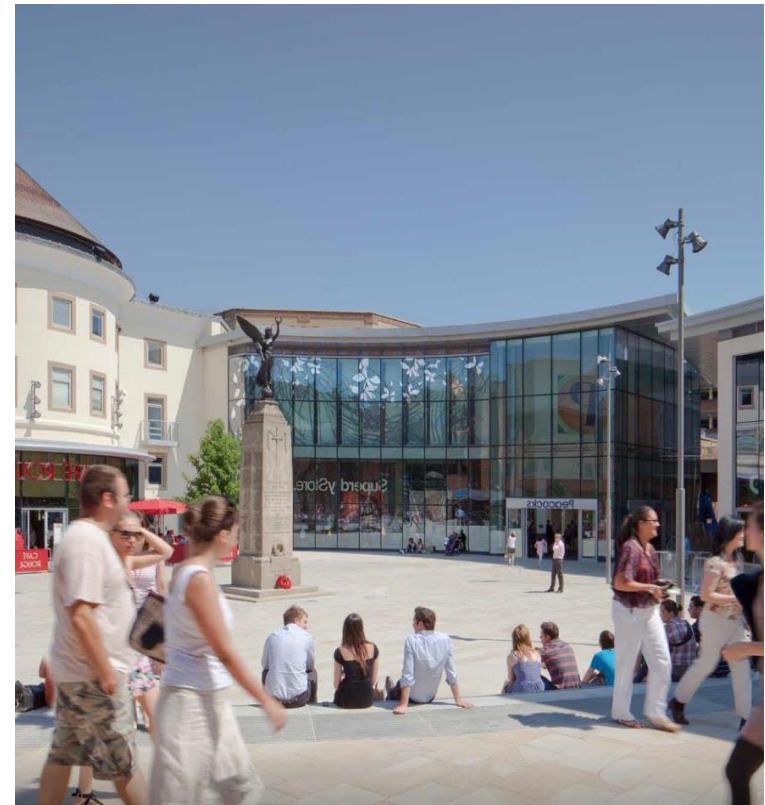
Estimated Population of Woking

- Total Population - June 2016 **99,695**

Estimated Population																		
Age 0-4	Age 5-9	Age 10-14	Age 15-19	Age 20-24	Age 25-29	Age 30-34	Age 35-39	Age 40-44	Age 45-49	Age 50-54	Age 55-59	Age 60-64	Age 65-69	Age 70-74	Age 75-79	Age 80-84	Age 85-89	Age 90+
7044	7311	5917	5197	3938	5376	6465	7897	8002	7432	7123	6194	5058	4999	3773	2944	2368	1659	998

- Total Population - 2034 **109,932**

Peacocks Shopping Centre & Jubilee Square



Café Rouge & Library



2005-2006
Sustainable Energy



2007-2008
Promoting Sustainable
Communities Through
the Planning Process



2008-2009
Tackling Climate Change

Towards tomorrow today



Market Walk



2005-2006
Sustainable Energy



2007-2008
Promoting Sustainable
Communities Through
the Planning Process



2008-2009
Tackling Climate Change

Towards tomorrow today



Commercial Way



Victoria Arch



Guildford Road Proposed New Road Layout



Guildford Road Proposed Junction with Victoria Road



2005-2006
Sustainable Energy



2007-2008
Promoting Sustainable
Communities Through
the Planning Process



2008-2009
Tackling Climate Change

Towards tomorrow today



Victoria Arch & A320 Consultation



Visit <https://www.woking.gov.uk/planning/majordevelopments/guildfordrdconsultation>

Consultation closes on 24 October 2018

Woking Station

40%

Increase in passenger capacity

Network Rail is working in partnership with Woking Borough Council to bring forward major infrastructure improvements in Woking Town Centre. A rail junction separation scheme at Woking Station, which could increase passenger capacity by about 40%, is being planned. Alongside this increase on the rail network, new facilities on the south side of Woking Station and improvements to vehicular, cyclist and pedestrian flows under a new Victoria Arch will be secured.

All these improvements are being targeted for completion by 2024. In addition, fast trains to and from Woking will give passengers access to Crossrail 2 via an interchange in South West London.



Woking Station – South Side



Albion Square & Woking Station



Station Plaza



2005-2006
Sustainable Energy



2007-2008
Promoting Sustainable
Communities Through
the Planning Process



2008-2009
Tackling Climate Change

Towards tomorrow today



Church Path Works



2005-2006
Sustainable Energy



2007-2008
Promoting Sustainable
Communities Through
the Planning Process



2008-2009
Tackling Climate Change

Towards tomorrow today



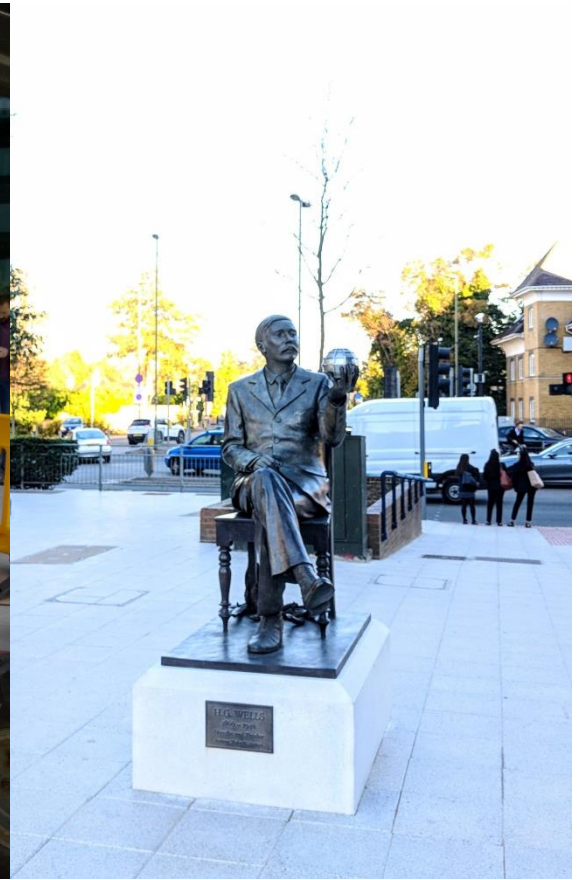
Victoria Way – Town Quay Bus Stop



Basingstoke Canal – Town Quay Works



Novelist & Thinker



2005-2006
Sustainable Energy



2007-2008
Promoting Sustainable
Communities Through
the Planning Process



2008-2009
Tackling Climate Change

Towards tomorrow today



Hoe Valley School & Sports Box



2005-2006
Sustainable Energy



2007-2008
Promoting Sustainable
Communities Through
the Planning Process

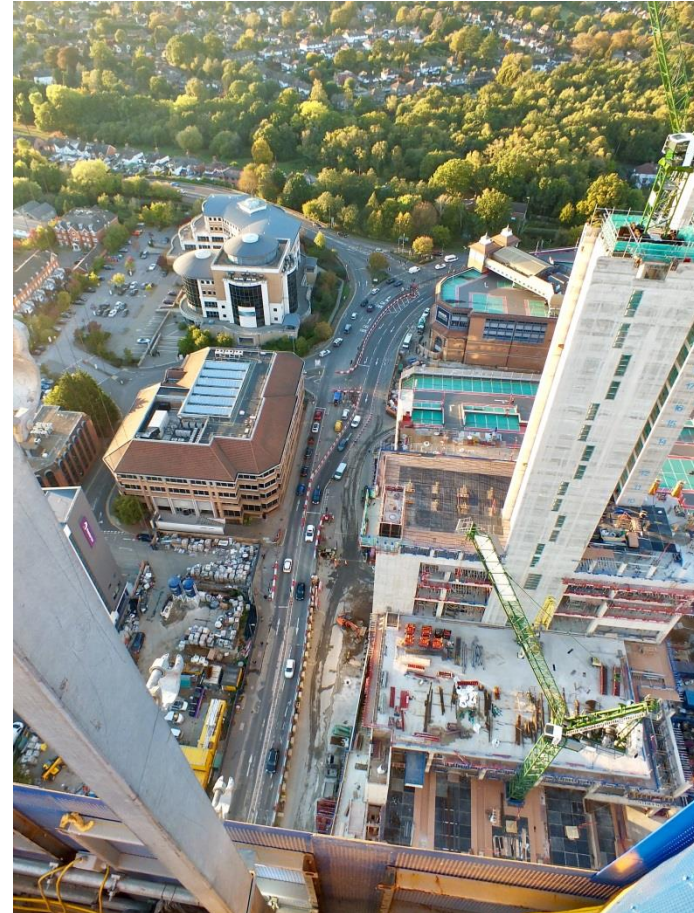
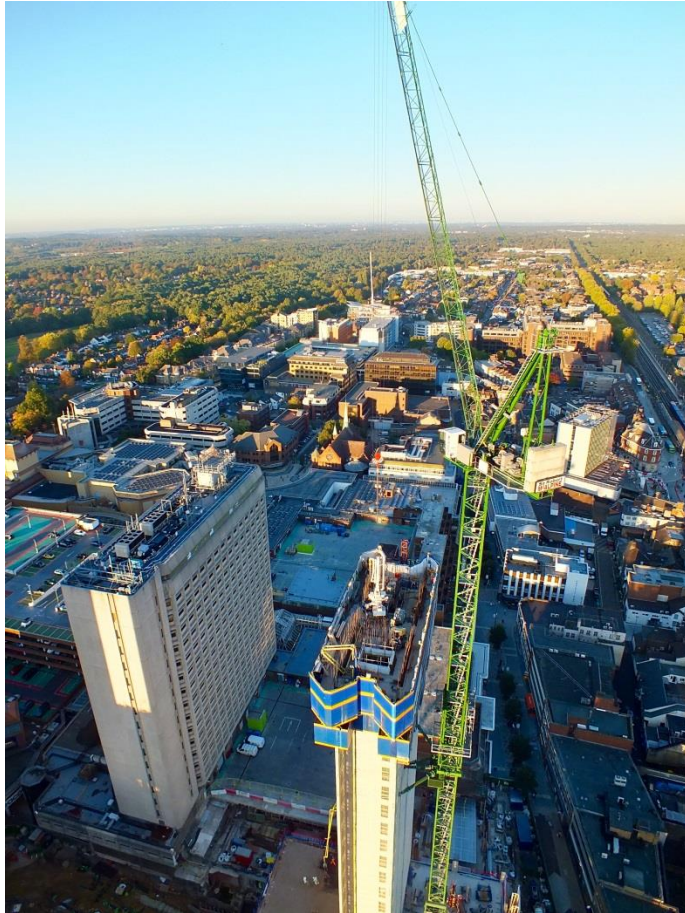


2008-2009
Tackling Climate Change

Towards tomorrow today



Victoria Square Development



2005-2006
Sustainable Energy



2007-2008
Promoting Sustainable
Communities Through
the Planning Process



2008-2009
Tackling Climate Change

Towards tomorrow today



Victoria Square Development



2005-2006
Sustainable Energy



2007-2008
Promoting Sustainable
Communities Through
the Planning Process



2008-2009
Tackling Climate Change

Towards tomorrow today



Victoria Square Development



Victoria Square Development



2005-2006
Sustainable Energy



2007-2008
Promoting Sustainable
Communities Through
the Planning Process



2008-2009
Tackling Climate Change

Towards tomorrow today



Victoria Square



Victoria Square



Victoria Square



2005-2006
Sustainable Energy



2007-2008
Promoting Sustainable
Communities Through
the Planning Process



2008-2009
Tackling Climate Change

Towards tomorrow today



Gateway Development

476

Residential units

1,941 163

SQM Retail & restaurant space SQM Community space

4,412 1,115 586

SQM Commercial space SQM Commercial space SQM Flexible space

607 37,790

SQM Office space SQM Residential space



There are 476 residential units accommodated in three towers. This will sit above circa 4,412 SQM (47,500 SQFT) of new commercial space (including the re-provision of community uses) predominantly facing Commercial Way with ancillary servicing and parking accessed from the High Street.

20- 32 Goldsworth Road

870

Residential units

4,700

SQM Office space



2005-2006
Sustainable Energy



2007-2008
Promoting Sustainable
Communities Through
the Planning Process



2008-2009
Tackling Climate Change

Towards tomorrow today



Concorde House



2005-2006
Sustainable Energy



2007-2008
Promoting Sustainable
Communities Through
the Planning Process



2008-2009
Tackling Climate Change

Towards tomorrow today



Sustainability



(www.cei-bois.org)

Woking 2050 - Goals

- A Borough which:
 - Protects and enhances its high quality natural environment
 - Uses resources wisely and conserves biodiversity
 - Develops a sustainable built environment that meets local needs and allows the economy to prosper
 - Recognises, prepares and adapts to the socio-economic, environmental and demographic changes the future will bring.

Woking 2050

- Climate change strategy (2015).
- Looks at our whole way of living and how it can influence our environment.
- Balancing environmental aspirations with development and economic needs.
- A framework to coordinate efforts.

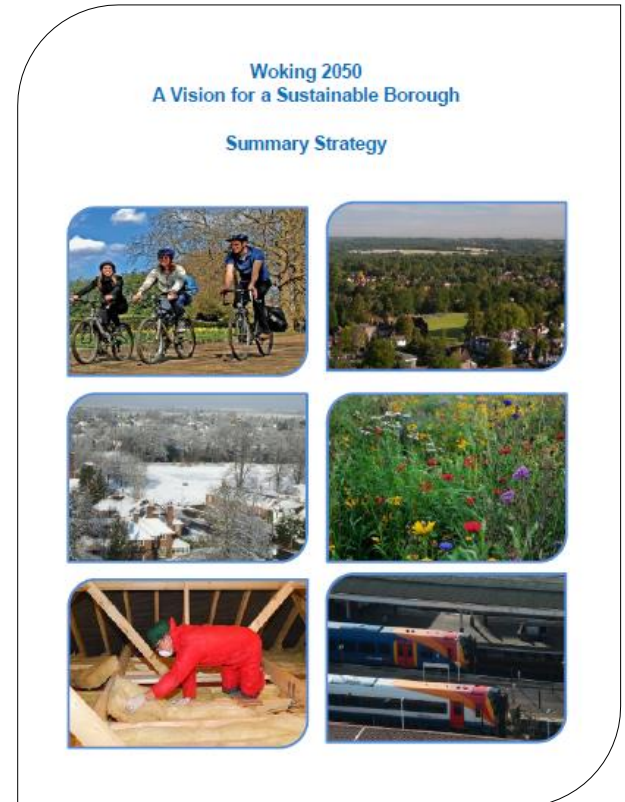
Woking 2050
A Vision for a Sustainable Borough

Summary Strategy



Woking 2050 -Themes


1. Home is where the heart is
2. In the workplace
3. Getting around
4. The great outdoors
5. What the Council is doing



Natural Woking - Goals


- Biodiversity and green infrastructure strategy
- Supporting information
- Positive outcomes for habitats and people.

Natural Woking
Biodiversity and Green Infrastructure Strategy



The Basingstoke Canal and World Wildlife Fund (WWF) headquarters in central Woking (WBC)

www.woking.gov.uk
Prepared by the Green Infrastructure and Planning Policy teams, Woking Borough Council, March 2016
For more information contact greeninfrastructure@woking.gov.uk

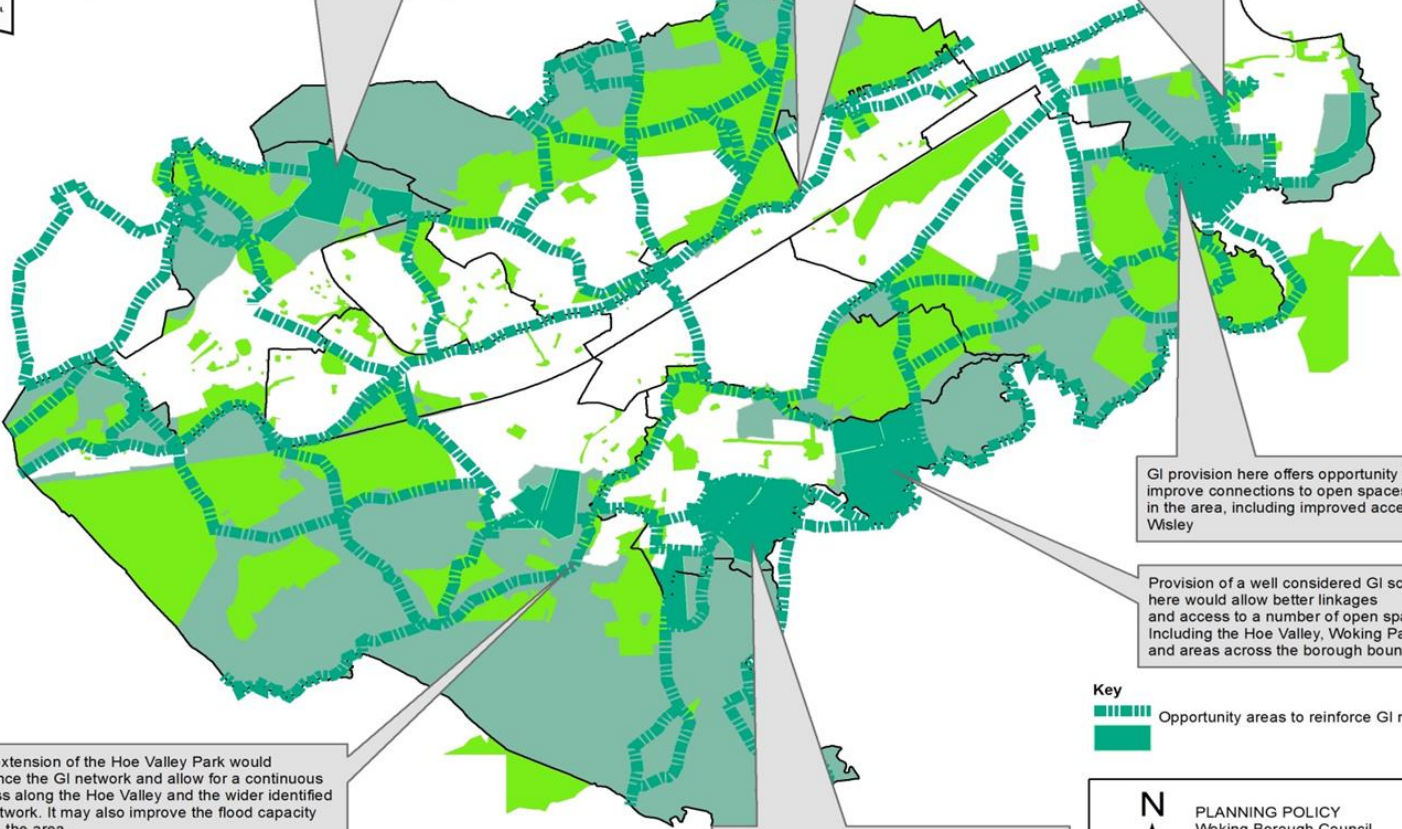




Provision of GI in this location would allow for improved accessibility between open spaces in this part of the borough

Opportunity for a continuous accessible corridor along the Canal

The analysis of GI distribution demonstrates a lack of SANG provision to the east of the borough. Provision here would resolve this.



GI provision here offers opportunity to improve connections to open spaces in the area, including improved access to Wisley

Provision of a well considered GI scheme here would allow better linkages and access to a number of open spaces. Including the Hoe Valley, Woking Palace and areas across the borough boundary

Key
Opportunity areas to reinforce GI network

N
PLANNING POLICY
Woking Borough Council
Civic Offices
Gloucester Square
Woking, Surrey GU21 6YL

The extension of the Hoe Valley Park would enhance the GI network and allow for a continuous access along the Hoe Valley and the wider identified GI network. It may also improve the flood capacity within the area.

Provision of GI in this location would allow for improved accessibility between open spaces in this part of the borough. There is potential to extend the SANG here.

© Crown copyright and database rights 2015 Ordnance Survey 100025452. This product is produced in part from PAF and multiple residence data which is owned by Royal Mail Group Limited and / or Royal Mail Group PLC. All Rights Reserved, Licence no. 100025452.



Towards tomorrow today



Questions & Answers



2005-2006
Sustainable Energy



2007-2008
Promoting Sustainable
Communities Through
the Planning Process



2008-2009
Tackling Climate Change

Towards tomorrow today

