

the

# WOKING

magazine




**A new youth marching band  
for Woking**

**Meet the 47th Mayor of Woking**

Summer 2021

Please read and then recycle

  @wokingcouncil

 [www.facebook.com/wokingbc](https://www.facebook.com/wokingbc)

 [www.woking.gov.uk/thewokingmagazine](https://www.woking.gov.uk/thewokingmagazine)



**Riser Recliners**



from **£499** ex-VAT

**Mobility Scooters**



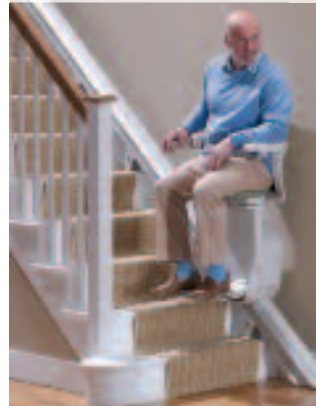
from **£649** ex-VAT

**Wheeled Walkers**



from **£69.99** ex-VAT

**Stairlifts**



from **£1,690** ex-VAT

**Woking Showroom**

105 Goldsworth Road  
Woking  
GU21 6LJ



**Call 01483 767 733**

Mon-Sat: 9:00am - 5:00pm

**COVID** 

**SECURE MEASURES** 

-  Limited customer groups
-  Hand sanitising stations
-  Distancing measures
-  Face masks available

Shop online - [www.clearwellmobility.co.uk](http://www.clearwellmobility.co.uk)



**2 weeks free stay\***



**We understand Victoria enjoys a competitive game of scrabble**

At West Hall, we support our residents with tailored and individual activities so Victoria will have a worthy challenger!

Contact us. 01932 800525 | [www.westhall.org.uk](http://www.westhall.org.uk)

West Hall care home, Off Parvis Road, West Byfleet, Surrey, KT14 6EY



# Introduction



**Welcome to the summer edition of The Woking Magazine.**

With the arrival of summer, many of us have received our first and second dose of the Covid-19 vaccine. As we return to our normal way of life, there is a feeling of renewed vitality and positivity spreading across the country.

And this excited optimism continues as we see the progression of some major projects for the borough. With the first phase of the Sheerwater Regeneration Scheme nearing completion, read about the new high-spec, energy efficient homes ready to receive their first tenants.

There's an update on the £115 million Victoria Arch and highway widening scheme, plus we find out more about the Victoria Place development, as the town's newest green wall is installed.

Elsewhere in the borough, domestic abuse charity Your Sanctuary has moved into their new refuge - a stunning, and, more importantly, safe space that women and their children fleeing domestic abuse can call home whilst rebuilding their lives.

It's all change here at the Council too, as we welcome Julie Fisher as our new CEO. You can read about her aspirations for the borough and the local authority's new corporate plan. We also hear from our 'high-flying' new mayor, local teacher and amateur pilot, Cllr Liam Lyons.

Not forgetting our youngest residents, discover the exciting world of the army cadets, or find out about Woking's new marching band, Raiders.

As always, there's plenty of great community and Council news to share with you.

And that just leaves me to remind you to remain vigilant and continue to follow government guidelines as and when they are announced.

I also wish you a fantastic, safe summer and hope you enjoy making the most of the easing of restrictions with family and friends.

**Andy Denner**  
The Woking Magazine  
Editor



Front cover: Image courtesy of Raiders Performing Arts  
Inset: Cllr Liam Lyons, Mayor of Woking



# Contents

	<b>News in brief</b> Latest news from across the borough	<b>4</b>
	<b>New leadership hails new corporate plan</b> Shaping the future of our borough, together	<b>13</b>
	<b>Meet the Mayor</b> Meet Cllr Liam Lyons, 47th Mayor of Woking	<b>15</b>
	<b>Victoria Arch widening scheme</b> The first phase of the highway enhancement scheme is underway	<b>16</b>
	<b>Introducing Canalside</b> First new high-spec homes to rent in Sheerwater	<b>18</b>
	<b>Ten years of healing through art</b> Celebrating the tenth year of the Women's Support Centre Art Awards	<b>20</b>
	<b>A new sanctuary for domestic abuse survivors</b> Explore the new purpose-built refuge	<b>22</b>
	<b>Discover White Rose Lane local nature reserve</b> Peace and solitude in a lush green woodland	<b>26</b>
	<b>Why don't you...</b> Join the Army Cadets	<b>30</b>

## Contact details

The Woking Magazine is compiled and published three times a year by Woking Borough Council. A total of 50,000 copies are printed and delivered free to households and many public information points across the borough.

**Editorial Team:** Andy Denner, phone 01483 743026, email andy.denner@woking.gov.uk **Quantum PR**, phone 01233 500200, email charlie@quantumpr.co.uk  
**Design:** Quantum PR

If you wish to **advertise** in The Woking Magazine, please call Andy Denner on 01483 743026, or email andy.denner@woking.gov.uk

The appearance of adverts or loose leaf inserts in The Woking Magazine does not constitute an endorsement by the Council. The Woking Magazine is distributed to households via Royal Mail. We have no control over the type or quantity of other materials that are delivered by Royal Mail at the same time.

**Some content within this publication may pre-date current government imposed regulations in force to control the spread of Coronavirus.**

## New life for spare tech

**During lockdown, many children across Woking had no access either to a laptop or the internet. Even now, access to laptops is limited, with a recent survey suggesting over 300 laptops are needed.**

Which is why MASCOT and ROC Woking have been leading the way to help out.

They are collecting unwanted laptops and rebuilding them before passing them on to schools to distribute to pupils in need. Laptops have their data completely wiped and are then set up for use with virtual lessons.

The scheme is inviting Woking residents to dig out their unused laptops and make a difference to local children.

For more information visit [www.rocwoking.org.uk/laptops4schools](http://www.rocwoking.org.uk/laptops4schools)



## It's time for period dignity across Surrey

**Surrey County Council had launched a ground-breaking initiative with charity Binti International, to provide free period products in selected locations across Surrey and be the first county council in the UK to start eradicating period stigma.**

Look out for the Binti stickers in libraries that show that free pads are provided in that location. There is no need to ask – simply go to the collection box and help yourself.

There are four collection/donation points in the borough:

- Knaphill Library
- Quadrant Court (Guildford Road, Woking)
- West Byfleet Library
- Woking Library

A Binti app is also available to download so residents can find the nearest location where free period products are available to collect and where you can donate. The app is available to download on the Apple app store for IOS users or the Google Play store for Android users. For more information, visit [www.bintiperiod.org](http://www.bintiperiod.org)

## All your mobility assistance needs catered for

**Woking Shopmobility, supported by Woking Borough Council and Woking Shopping, provide a hire service to members of the public who require mobility assistance in and around Woking Town Centre.**

The service boasts an extensive range of mobility scooters, powered wheelchairs and manual wheelchairs, including children's sizes. Travel scooters, and manual wheelchairs are also available, by appointment, for short or long-term private hire.

Measures are in place to ensure the safety of staff and customers including sanitisation of equipment before and after use and pre-booking of equipment as standard.

You do not need to be registered disabled to use the service and it is available for anyone needing

extra assistance when shopping, including people receiving post-op care, pregnancy and those recovering from accidents or sports injuries.

You can find Woking Shopmobility on Level One of the Shoppers' Car Park, with a private car park for use by clients free of charge when hiring.

Customers can register as a member for a small annual fee. A full list of hire fees, including how to register, can be found at [www.wokingshopmobility.co.uk](http://www.wokingshopmobility.co.uk)

To book in advance, email [wokingshopmobility@googlemail.com](mailto:wokingshopmobility@googlemail.com) or phone **01483 776612**.

Find the service on Instagram **#wokingshopmobility** and Facebook **@wokingshopmob**

## New youth marching band for Woking

**Young people have the chance to learn a musical instrument and dance thanks to the launch of an exciting local marching band.**

Raiders Performing Arts Marching Band gives young people the chance to learn a new skill, meet other like-minded young people and enjoy being part of a team. Raiders supply a wide range of musical instruments and have a dance section similar to majorettes.

There's a wide range of instruments to learn, from wind and percussion to brass. Tuition is provided, along with various musical and visual routines. Band members will then have the opportunity to perform at local fetes, parades and carnivals, for which uniforms will be supplied.

Paul Newman, Director of Raiders Performing Arts, said about the band: "The last year has been a challenge

for everyone because of the pandemic and children and young people have lost 15 months of their youth.

"We set up Raiders to give our band members an exciting and fun new hobby to concentrate on and the chance to make new friends and some lovely memories.

"Raiders will be a fun and friendly place for them to be."

The band is open to young people aged from six to 24. For more information about Raiders rehearsal times and fees, or to book a free trial session, call Paul on **07773 058317**, email

**info@raidersperformingarts.com** or visit **www.raidersperformingarts.com**



## New look community cafés welcome visitors

**Woking's new look community-focused cafés are warmly welcoming coffee lovers back with their delicious brews. Have you discovered them yet?**

Based at Moorcroft Centre for the Community, the freshly redecorated community café, The Haven, run by social enterprise Neat2Eat, offers hot drinks,

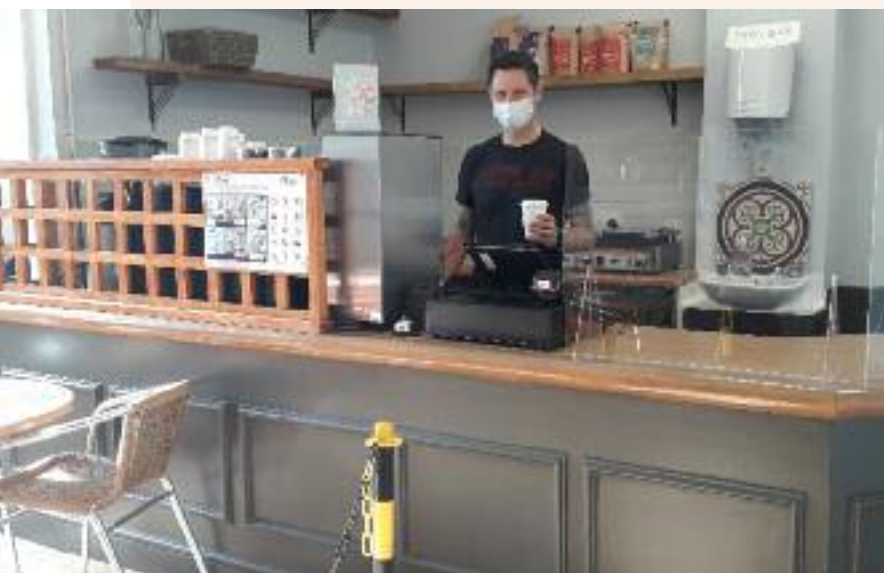
cakes and light bites in a family-friendly setting, with plenty of space to socialise in the open-air courtyard. Located at Old School Place, Westfield.

Byfleet residents can enjoy eco-friendly, artisan coffee, cake and light bites at the recently renovated Art Café at St Mary's Centre for the Community. Stop for a while or grab your fare and go. Located at Stream Close, Byfleet.

Meanwhile, The Vyne Centre for the Community in Knaphill is once again offering hot drinks, snacks and lunchtime meals. Located at Broadway, Knaphill.

Following the easing of restrictions, the borough's four centres for the community have reopened for groups and people of all ages. A changing programme of activities and events provide opportunities for learning, exercising and socialising.

For more information, please visit **www.woking.gov.uk/community/centres-community**



## Civic Offices reopens for appointments only

**After an extended period of closure due to the coronavirus pandemic, the Civic Offices has reopened its doors for essential appointments only.**

This means that visitors can only enter the Civic Offices if they have a pre-arranged appointment. On arrival, visitors will be asked to sanitise their hands and wear a face covering to ensure the safety of both other visitors and staff members.

Residents with non-essential enquiries should visit [www.woking.gov.uk](http://www.woking.gov.uk) where many tasks can be completed online. Alternatively, residents can email [customerservices@woking.gov.uk](mailto:customerservices@woking.gov.uk) or call **01483 755855**.

To make an essential appointment, please call **01483 755855** (9am – 4.45pm) and ask to speak to the department required.

Please note, only if the matter is deemed essential by the department and, cannot be dealt with via the Council's website, email or phone, will an appointment be arranged.



## Woking ranked best place to live

**Woking has powered its way to the top of the UK Vitality Index 2021, beating Edinburgh, Cambridge and Bath in rankings for the country's best prospects across a range of indicators including economy, business, health outcomes and the environment.**

Compiled by Lambert Smith Hampton, the 'definitive health check on the UK's towns and cities' assesses locations outside London to identify the best places to live, work and do business, in addition to those with the highest growth potential.

Woking performed "especially well" for the

Economy and Business and Health and Environment measures and had a top score for wage growth and commercial property investment.

Woking was also particularly strong on the Health and Environment pillar, with low levels of cardiovascular mortality and high scores for life satisfaction and recycling. It also scored highly for educational attainment, affluent households and a low retail vacancy rate.

Woking has also scored highly in other rankings, earning its place among the happiest places in the UK, according to the Office for National Statistics, while the most recent Halifax Quality of Life Survey named Woking among the 20 best places to live in Britain.

Out of 379 local authority areas, Woking also recently ranked fifth in The UK Prosperity Index, published by The Legatum Institute, again recognising the borough as one of the best local authority areas in the country to live, work and play, according to a research study.



## Catch award-winning films at the award-winning Nova Cinema

**Nova Cinema is once again welcoming guests from Woking and beyond! The new, fully-refurbished cinema, designed by Wren Architects, replaced the previous Ambassadors Cinema in October 2020.**

The stylish seven screen venue offers a cinema experience like no other, featuring out-of-this-world cinematic technology, with 4K laser projection and Dolby Atmos immersive sound in Screen One, plus a brand-new luxury screen, premium bar and revamped foyer spaces for safe socialising.

The transformation has already made waves within the Woking community, and has now been recognised at the International Design Awards with a Silver Award for Interior Design. With many blockbuster films on the horizon, you can now catch award-winning films in an award-winning venue, right here in Woking.

For more information, including screening times and bookings, visit [www.novacinema.com](http://www.novacinema.com)



## Oops...

**Unfortunately, we forgot to include details of how to download the new Woking Palace audio tour app when we covered it in the Spring edition.**

To get the guide, simply download the izi.TRAVEL app on to your phone and search 'Woking Palace'. There is limited signal on site, so download the app before you start and use headphones for better sound quality, although remove them when crossing roads.

For more information, please visit [www.woking.gov.uk/wokingpalace](http://www.woking.gov.uk/wokingpalace)

## Have you considered volunteering?

**With life thankfully returning to some sort of normality for the majority of us, there's still those within our communities that require support. You can help by volunteering your time.**

Volunteer Woking offers a wide variety of volunteering roles and options, making it easier than you think to find something that makes a difference and fits around your interests, skills and lifestyle.

Whether you have an hour a week to spare, an evening a month or you would like to support a one-off event, there's something for all ages and abilities.

Here's just a few of our latest opportunities:

- **Befriender – with Woking Age Concern**

Visit older people in their own homes to help combat loneliness. Ideally at least one hour per week on a regular basis. Full support and any necessary training will be given to all volunteers.

- **Gardener - Adopt a grave at St Mary's Horsell**

Join a team of around 35 volunteers who trim grass and weed between the awkward cracks at St Mary's Church graveyard in Horsell.

- **Volunteer Driver Mobility Aids – British Red Cross**

Deliver or collect wheelchairs to or from people's homes to help clients maintain their independence, or choose to support members of the public to obtain a wheelchair or other mobility aids and equipment.

Interested? Find out more about these and many other volunteering opportunities by emailing [volunteer@woking.gov.uk](mailto:volunteer@woking.gov.uk), call **01483 743851** or visit [www.volunteerplus.org.uk/centres/woking](http://www.volunteerplus.org.uk/centres/woking)

Follow on social [@volunteerwoking](https://www.instagram.com/volunteerwoking)

## Step 2 Work supports young people into employment

**Local charity, Surrey Care Trust, supported by Woking Borough Council and Department for Work and Pensions, has launched a new scheme to support young people into employment.**

Step 2 Work helps young people aged between 18 and 25 who are at particular risk of unemployment gain the tools they need to find a job. Each young person will be supported by a specially trained volunteer Work Coach, who will motivate and inspire, help to build confidence and provide practical assistance, such as helping young people to job search effectively and succeed in interviews.

As a community based charity, the Surrey Care Trust

welcomes the support of local businesses to help provide work placements, training or apprenticeships to create brighter futures for young people in Woking.

If you would like to enable young people to make better opportunities for themselves as well as a positive contribution to your company and the local community, please email

**[cathy.leamon@surreycaretrust.org.uk](mailto:cathy.leamon@surreycaretrust.org.uk)**

## Welcome back to leisure!

**After a long period of restrictions, fitness activities have returned and Freedom Leisure is busy welcoming members and customers back to Woking Leisure Centre, Woking Sportsbox and Pool in the Park.**

Following the latest advice from sports' governing bodies to ensure that customers can enjoy their favourite pursuits in the safest ways, activities including gym, swimming, racket sports, fitness classes, 3G football and children's activities are all available again.

There have also been exciting new developments whilst the centres have been closed, such as the

completion of the new changing rooms and café refurbishment at the pool and the creation of five new NHS treatment rooms at Woking Leisure Centre, which will see the integration of health referral services into the gym, studio and pool programmes.

There is also a new youth gym membership for 14 to 15 year olds at Sportsbox, whilst Pool in the Park continues to develop the Learn to Swim programme for children and adults of all ages.

For more information, including online bookings, visit **[www.freedom-leisure.co.uk/WokingLC](http://www.freedom-leisure.co.uk/WokingLC)**





## There's no excuse for fly-tipping

**A 'heap' of fly-tippers have been tracked down and handed fines by Woking Borough Council during lockdown.**

Lawbreakers have been caught dumping mattresses, sofas, beds and other bulky household waste items, before driving away.

Every incident of fly-tipping that takes place in the borough is cleared up before it is investigated and fines issued wherever it is possible to correctly identify and locate perpetrators.

As well as being unsightly, dangerous and anti-social, fly-tipping is also a criminal offence. There are plenty of options available in the borough for waste disposal, allowing residents to dispose of their waste in a convenient and safe manner.



The obligation to ensure that waste is disposed of lawfully falls onto whoever produces the waste. A householder using a waste carrier that is not licensed, and who illegally disposes of their waste, is liable to receive the fine and even face prosecution.

Residents are encouraged to report incidents of fly-tipping as soon as possible. Anyone caught fly-tipping could receive anything from a £400 fixed penalty notice to a £50,000 fine or a 12-month jail sentence if convicted in a magistrates' court.

To learn more about fly-tipping and waste disposal in Woking, visit [www.woking.gov.uk/flytipping](http://www.woking.gov.uk/flytipping)

## A bright past and a brilliant future

**It's an important year for Soroptimist Woking & District, the local division of Soroptimist International, a worldwide network of clubs where women work together through awareness, advocacy and action to improve lives.**



This year the organisation will celebrate its 45th anniversary – members have been supporting and initiating local projects and charities since 1976. Whilst Soroptimist International celebrates its centenary.

To mark the occasion, Surrey History Centre is hosting an exhibition to mark these anniversaries. During October 2021, residents will be able to discover more about Soroptimist International – how

it has grown since 1921 to become a global voice for women, contributing positively to the United Nations' work on women's issues. And how Soroptimist International Clubs, with their strong mission of service, help their local community.

You can visit the exhibition from 1 to 31 October 2021 at Surrey History Centre. For more information, please visit [www.surreycc.gov.uk/surreyhistorycentre](http://www.surreycc.gov.uk/surreyhistorycentre)

## Rogue traders are root cause of illegal tree works

**Residents are asked to stay vigilant against fraudulent tradesmen offering tree works when they are unqualified and unregistered to do so.**

Unsuspecting owners are duped into having work undertaken on their protected trees without appropriate permission being sought first. A practice that can be devastating for the individual trees and have serious repercussions for the resident.

Recent cases include a resident who was told that their protected tree was dead and needing felling. They contacted Woking Borough Council and an inspection determined the tree to be in perfect health. In a separate incident, a protected tree was badly damaged by unprofessional and unnecessary pruning.

Residents could be fined up to £2,000 for allowing unauthorised work on their tree and even more for illegal felling. In spring 2020 a resident was fined £25,000 for the unauthorised removal of a protected tree on their land.

To report suspicious approaches by people claiming to be tree surgeons or for guidance on the management of protected trees, email [trees@woking.gov.uk](mailto:trees@woking.gov.uk) or call **01483 743843**.

## New website highlights trees planted across county

**As part of Surrey County Council's commitment, supported locally by Woking Borough Council, to plant 1.2 million trees across the county, a new website has been launched to track progress.**

The new online map identifies where trees and hedges have been planted within the county. The interactive tool shows the location and quantity planted, along with additional information such as who planted the tree, species of tree and the date of planting.

Take a look for yourself by visiting [www.surreysgreenerfuture.commonplace.is/proposals/1-2-million-new-trees-initiative](http://www.surreysgreenerfuture.commonplace.is/proposals/1-2-million-new-trees-initiative)

## Supporting local sole traders and start-ups

**Millions of people have seen their working lives transformed over the course of the past year, not least as measures have been introduced to slow the spread of Covid-19.**

For self-employed people, access to support can be patchy at best and, at worst, non-existent.

Woking Works provides a wide range of free services to support the business community within Woking, including:

- A directory where businesses can advertise their products and services for free
- A free Start Up Woking programme for new companies, providing information and covering a range of business needs including grants, commercial premises, and Government schemes.
- Excellent links with commercial partners including the Enterprise M3 Growth Hub, Woking Chamber of Commerce, Surrey Chambers of Commerce and the Woking Asian Business Forum, all of which provide free expert advice and support.

There has never been a better time to join the vibrant business community in Woking. Woking Works can provide you with the following:

- Free one-to-one advice from a business advisor
- Access to a Knowledge Base
- An extensive calendar of workshops, webinars and networking events offered by Woking Works and our partners as well as Woking Chamber and Surrey Chamber of Commerce.
- Opportunity to participate in prestigious events such as TedX Woking, Crest sustainable events, Surrey Business Awards and many more.
- Opportunities to showcase your business, swap strategies with others in the business community and build valuable relationships informally in some of the best venues in Woking. Email [help@wokingworks.com](mailto:help@wokingworks.com), visit [www.wokingworks.com](http://www.wokingworks.com) or call **01483 743847** to find out more.



## Woking's own e-commerce platform launched

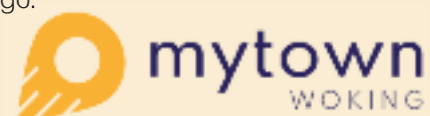
One of the few benefits of the pandemic has been we're all buying more produce from local suppliers. And according to a recent survey carried out by Woking Works, shoppers want to continue shopping locally once restrictions are lifted.



To assist shoppers, Woking Borough Council, funded by the European Regional Development Fund, is working with Mytown Shops, an online delivery platform for independent shops. The website helps butchers, delis, fishmongers, bakers, greengrocers and convenience stores showcase their produce on one platform. It enables local residents to have the finest artisan products delivered in one basket.

### How it works

1. Visit [www.mytownshops.com](http://www.mytownshops.com) enter your postcode and place your order.
2. Each shop packs its part of your order.
3. MyTown Shops will deliver everything to you in one go.



## The Big Conversation

**Establishing an effective, two-way dialogue with residents and other stakeholders is a priority for the Council, giving a voice to all members of Woking Borough community.**

A new, online civic space, called Woking Community Forum, and reinvigorated residents' panel have been established so that the Council can better listen and respond to community concerns.

Not only does the Council want to get better at listening and responding to community concerns, it also wants to work with residents, businesses, partners and councillors to develop its long-term plans.

By giving a voice to members of the community of all ages, abilities and backgrounds, the Council aims to tap into the many diverse communities that live in the borough, to understand what residents feel about the services provided.

### Woking Community Forum

The new online civic space allows the Council to share plans for the future and provide a space for residents to feedback and share their views about services and future plans for the borough.

It will allow residents to communicate ideas and allow the Council to explain the reasons behind decisions and changes they make, as well as seek alternative opinions and solutions.

Launched in May, Woking Community Forum has already successfully hosted a consultation on the Council's Housing Strategy 2021-2026, receiving over 250 responses and many great ideas that the Council will consider in the future.

The forum will be the destination for all future Council-related consultations and engagement across its services and what matters to residents, including environmental concerns, development within the borough and working with the business community.

### Woking Residents' Panel

Relaunched earlier this year, over 750 borough residents from a wide demographic and geographic area have already signed up to the panel.

The panel will provide residents with ongoing opportunities to shape the future of their local area, by acting as a sounding board for decision-



makers on future initiatives. Panel members have their own dedicated area online and access to exclusive events where they can put forward ideas for improving the borough.

The panel is open to all residents of Woking aged 18 and over. Whilst there's been a great response to the panel so far, it is particularly keen to hear from residents aged between 18 and 44 to help provide a younger perspective.

Panel members are not required to have any prior knowledge or expertise to join and members of minority groups are encouraged.

To explore the Woking Community Forum and discover live consultations, as well as find out more about the Residents' Panel, visit [www.communityforum.woking.gov.uk](http://www.communityforum.woking.gov.uk)

**AS SEEN ON** TV
ChipsAway
MARK HUNTER
★ Trustpilot  
★★★★★

Your local car body repair expert

➤ Major Panel Damage?

➤ Dents?

➤ Paintwork Scratches?

➤ Bumper Scuffs & Cracks?

Don't lose out on your no claims bonus, call for your free estimate today!

**FREE COLLECTION AND DELIVERY FROM YOUR HOME OR WORKPLACE**  
 REPAIRS COMPLETED AT OUR CAR CARE CENTRE IN WOKING

SAME DAY REPAIRS GUARANTEED

01932 336999

email [mark.hunter@chipsaway.co.uk](mailto:mark.hunter@chipsaway.co.uk)  
 or visit [www.chipsaway.biz](http://www.chipsaway.biz)

\*Length of repair will be confirmed at time of order

## New leadership hails new corporate plan

**On Thursday 1 April 2021, Julie Fisher took up the post of Woking Borough Council’s new Chief Executive. One of her first achievements in the role was to publish a corporate plan setting out the Council’s objectives and how these will shape the future of our borough.**

“I am absolutely thrilled to have been appointed the new Chief Executive of Woking Borough Council.” Julie said. “Woking is a vibrant and ambitious borough, with strong and diverse communities, where growth and regeneration deliver long-term prosperity and wellbeing for all our residents.”

Julie continues: “One of my first priorities has been to deliver a Corporate Plan that sets out the organisations, key objectives for the coming 12 months. It is an opportunity for residents to better understand what we do and why we do it.

“The Corporate Plan sets out key objectives within each of the Council’s key services areas – People, Place and Us. It also defines how the local authority will achieve these objectives.

“It includes information on the Council’s budget to deliver services to over 100,000 residents, as well as details on how the Council operates and the new online civic space for consultation and engagement.

“Central to our long-term plans is establishing an effective, two-way dialogue with residents and stakeholders, giving a voice to all members of our community. Not only do we want to get better at listening and responding to community concerns, we want to work with the community to develop a five-year strategy for 2022-2027.

“Through a shared vision, we can continue to make our borough a thriving destination for business, for leisure and a fantastic place to live.

“I look forward to bringing my many years of experience working within the public sector to make Woking a place which we are proud to call home.”

To find out more and read the corporate plan, visit [www.woking.gov.uk/corporateplan](http://www.woking.gov.uk/corporateplan)



## Dance for Parkinson’s

**Free, weekly dance classes specifically aimed at residents suffering with Parkinson’s and their carers have started at St Mary’s Centre for the Community in Byfleet.**

Dance has been proven to support people with Parkinson’s by developing self-confidence and temporarily relieving some of their day-to-day symptoms by improving balance, flexibility and strength.

Using the idea of storytelling, sharing, connecting, creating through dance, the classes will provide a fun, supportive and creative opportunity to explore and develop movement.

Dance for Parkinson’s is open to all. The free sessions take place at St Mary’s, Stream Close, Byfleet every Monday between 11am and 12noon followed by tea and coffee.

For more information, please email Kate at [iidconsortium@gmail.com](mailto:iidconsortium@gmail.com)

# Your local councillors

The votes have been counted and the results of the local election held on Thursday 6 May 2021 are in, with details of your local borough councillor below. For information about your local councillor, their role and how to watch council meetings, please visit [www.woking.gov.uk/councillors](http://www.woking.gov.uk/councillors)

To view the full election results of the local borough, county council and Police and Crime Commissioner for Surrey, please visit [www.woking.gov.uk/elections](http://www.woking.gov.uk/elections)

## BYFLEET & WEST BYFLEET

### BOOTE, Amanda (Ind)

Phone: 01932 344811  
Email: [cllramanda.boote@woking.gov.uk](mailto:cllramanda.boote@woking.gov.uk)

### BRIDGEMAN, Mary (Ind)

Phone: 07564 630741  
Email: [cllrmary.bridgeman@woking.gov.uk](mailto:cllrmary.bridgeman@woking.gov.uk)

### BROWN, Josh (Con)

Phone: 07340 102891  
Email: [cllrjosh.brown@woking.gov.uk](mailto:cllrjosh.brown@woking.gov.uk)

## CANALSIDE

### ALI, Mohammad (Lab)

Phone: 07877 337287  
Email: [cllrmohammad.ali@woking.gov.uk](mailto:cllrmohammad.ali@woking.gov.uk)

### AZIZ, Tahir (Lab)

Phone: 07737 039603  
Email: [cllrtahir.aziz@woking.gov.uk](mailto:cllrtahir.aziz@woking.gov.uk)

### RAJA, Mohammad Ilyas (Lab)

Phone: 07518 193084  
Email: [cllrmilyas.raja@woking.gov.uk](mailto:cllrmilyas.raja@woking.gov.uk)

## HEATHLANDS

### ASHALL, Simon (Con)

Phone: 07775 831098  
Email: [cllrsimon.ashall@woking.gov.uk](mailto:cllrsimon.ashall@woking.gov.uk)

### AZAD, Ayesha (Con)

Phone: 07807 639388  
Email: [cllrayesha.azad@woking.gov.uk](mailto:cllrayesha.azad@woking.gov.uk)

### DAVIS, Kevin (Con)

Phone: 01483 488109  
Email: [cllrkevin.davis@woking.gov.uk](mailto:cllrkevin.davis@woking.gov.uk)

## HOE VALLEY

### FORSTER, Will (Lib Dem)

Phone: 07980 971078  
Email: [cllrwill.forster@woking.gov.uk](mailto:cllrwill.forster@woking.gov.uk)

### HUGHES, Deborah (Lib Dem)

Phone: 01483 760361  
Email: [cllrdeborah.hughes@woking.gov.uk](mailto:cllrdeborah.hughes@woking.gov.uk)

### MORALES, Louise (Lib Dem)

Phone: 07967 855774  
Email: [cllrlouise.morales@woking.gov.uk](mailto:cllrlouise.morales@woking.gov.uk)

## HORSELL

### KEMP, Colin (Con)

Phone: 07889 289177  
Email: [cllrcolin.kemp@woking.gov.uk](mailto:cllrcolin.kemp@woking.gov.uk)

### KIRKBY, Adam (Lib Dem)

Phone: 01483 363126  
Email: [cllradam.kirby@woking.gov.uk](mailto:cllradam.kirby@woking.gov.uk)

### MARTIN, Nancy (Con)

Phone: 01483 827637  
Email: [cllrnancy.martin@woking.gov.uk](mailto:cllrnancy.martin@woking.gov.uk)

## GOLDSWORTH PARK

### BARKER, Ann-Marie (Lib Dem)

Phone: 07885 231878  
Email: [cllrann-marie.barker@woking.gov.uk](mailto:cllrann-marie.barker@woking.gov.uk)

### RANA, Chitra (Con)

Phone: 07894 272639  
Email: [cllrchitra.rana@woking.gov.uk](mailto:cllrchitra.rana@woking.gov.uk)

### SANDERSON, James (Lib Dem)

Phone: 01483 836053  
Email: [cllrjames.sanderson@woking.gov.uk](mailto:cllrjames.sanderson@woking.gov.uk)

## KNAPHILL

### HARLOW, Debbie (Con)

Phone: 07944 789630  
Email: [cllrdebbie.harlow@woking.gov.uk](mailto:cllrdebbie.harlow@woking.gov.uk)

### HUSSAIN, Saj (Con)

Phone: 07960 214261  
Email: [cllrsaj.hussain@woking.gov.uk](mailto:cllrsaj.hussain@woking.gov.uk)

### WHITEHAND, Melanie (Con)

Phone: 07801 225375  
Email: [cllrmelanie.whitehand@woking.gov.uk](mailto:cllrmelanie.whitehand@woking.gov.uk)

## MOUNT HERMON

### JOHNSON, Ian (Lib Dem)

Phone: 01483 776609 (Home)  
Email: [cllrian.johnson@woking.gov.uk](mailto:cllrian.johnson@woking.gov.uk)

### LYONS, Liam (Lib Dem)

Phone: 01483 764050  
Email: [cllrliam.lyons@woking.gov.uk](mailto:cllrliam.lyons@woking.gov.uk)

### NICHOLSON, Ellen (Lib Dem)

Phone: 07552 700970  
Email: [cllrellen.nicholson@woking.gov.uk](mailto:cllrellen.nicholson@woking.gov.uk)

## PYRFORD

### DORSETT, Steve (Con)

Phone: 07729 829658  
Email: [cllrsteve.dorsett@woking.gov.uk](mailto:cllrsteve.dorsett@woking.gov.uk)

### ELSON, Gary (Con)

Phone: 07824 628422  
Email: [cllrgary.elson@woking.gov.uk](mailto:cllrgary.elson@woking.gov.uk)

### MOHAMMED, Rashid (Con)

Phone: 07897 532823  
Email: [cllrrashid.mohammed@woking.gov.uk](mailto:cllrrashid.mohammed@woking.gov.uk)

## ST JOHNS

### ROBERTS, Dale (Lib Dem)

Phone: 0118 3283349  
Email: [cllrdale.roberts@woking.gov.uk](mailto:cllrdale.roberts@woking.gov.uk)

### HOWARD, Ken (Lib Dem)

Phone: 01483 480565  
Email: [cllrken.howard@woking.gov.uk](mailto:cllrken.howard@woking.gov.uk)

### LEACH, Rob (Lib Dem)

Phone: 01483 721589  
Email: [cllrrob.leach@woking.gov.uk](mailto:cllrrob.leach@woking.gov.uk)

# Meet the Mayor

**It's up, up and away for Cllr Liam Lyons, as he was elected 47th Mayor of Woking during the official Mayor Making ceremony held in May. The Woking Magazine caught up with Liam as his Mayoral year takes flight.**

Raised in Dublin, Liam has lived in the UK since attending Exeter University, before moving to Surrey to work as a singer with Guildford Cathedral Choir.

A Woking resident since 2005, Liam is a familiar face to many younger residents, as a humanities teacher at Hoe Valley School. He jokes: "My pupils are very excited that I am the next Mayor!"

Liam got a taste for local politics after he started to represent residents in the development in which he lives, explaining: "I soon wanted to become more involved in local decision-making and was elected as a Liberal Democrat councillor in 2010."

Liam focuses much of his attention on helping solve what he describes as "small issues that matter a great deal to the people who are affected by them" which is "one of the most important roles of being a local councillor."

"One example of such achievements was to get the 45-degree steps into Pool in the Park reinstated when they were replaced with a ladder" he explains. "The only other option at the time was a hoist, which is not appropriate for most mobility impaired swimmers."

He also champions environmental issues, and has campaigned for the Council to go paperless, highlighting that "working without printed papers came into its own during lockdown!"

Liam's passion for affordable housing was kindled after he benefitted from a key worker shared ownership scheme when purchasing his home in an apartment block near Woking Station: "I had the chance to benefit from this scheme as a teacher, and I am passionate about providing that opportunity to others and promoting equality within housing provision."

With a love of adventure, Liam talks about his high-flying pastime: "I am an amateur pilot and hold several gliding qualifications, I share ownership of a vintage glider". He has also put his other passion,



running, to good use by raising money for charity. "Most recently, I ran the Surrey Half Marathon to raise funds to buy a community-use defibrillator for Woking United Reformed Church."

Speaking with anticipation about his Mayoral year ahead, Liam adds: "As we emerge from the devastating effects of Covid-19 on our local community and economy, I really hope that as many events as possible can go ahead safely in accordance with any restrictions in place. I am looking forward to meeting people across the borough who help make Woking the diverse, resilient and thriving community that it is."

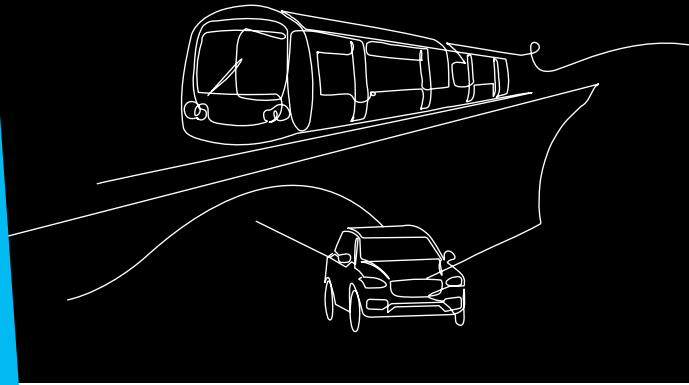
Liam's Mayoral charity will be Woking Mind. He explains his decision: "One in four of us will suffer from mental health problems at some stage in our lives, and I want to help normalise talking about these issues."

"Over the last year, the issue of mental health has been even more prominent and I hope this support will enable the excellent team to reach even more people and offer them the support they need."

Giving a final message to residents, Liam adds "As we emerge from the effects and impacts of lockdown, let's come together to celebrate what makes us so successful as a borough."

Cllr Saj Hussain will continue in his role as Deputy Mayor of Woking for a third consecutive year

# VICTORIA ARCH WIDENING SCHEME UPDATE



The first phase of the £115 million Victoria Arch widening and highway enhancement scheme is well underway.

## TRIANGLE SITE DEMOLITION PROGRESS

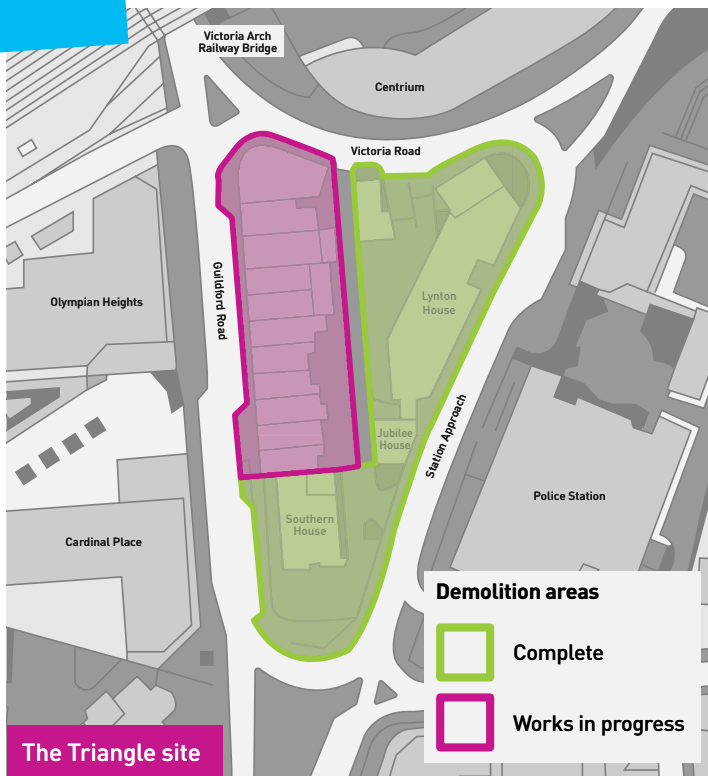
The first phase has focused on the demolition and clearance of the existing 'Triangle' site – the pocket of land surrounded by the existing one-way gyratory system incorporating Victoria Road, Station Approach and Guildford Road.

Delivered in stages, the works have successfully demolished and cleared four office blocks – Lynton House, Jubilee House, Southern House and Faith recruitment. The last stage, which is currently ongoing, is the gradual survey and demolition works of the terraced properties along Guildford Road.

The completion date for phase one is dependent upon whether or not the Council is required to activate the compulsory purchase order (CPO) powers it was granted in 2020 by Full Council. If unnecessary, the demolition completion date could be as early as the end of summer 2021.

When fully cleared, the footprint of the Triangle site will be covered with a hard-core surface to create a solid, flat base and it will remain undeveloped for the duration of the project.

As and when proposals for the site's future are assessed and drafted, these will be promoted for public viewing and consultation.



The Triangle site



**During the demolition.** The view from the New Central development of Lynton House (left) and Jubilee House (right).

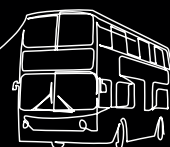
**After demolition.** The view of the cleared site where the former Lynton House and Jubilee House once stood.



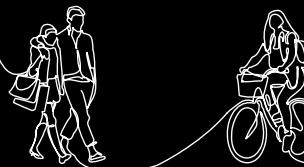
SUPPORTING  
WOKING'S  
GROWTH



WE ARE REVITALISING  
YOUR TRAVEL NETWORK







## PRESERVING THE TRIANGLE'S PAST

To preserve items of architectural interest from the Triangle site, the project team has been working closely with Charles Brooking, a Surrey historian and owner of The Brooking National Museum based in Cranleigh, to identify and save items from the Guildford Road properties.

## EARLY PREPARATION WORKS FOR THE FUTURE PHASES

Earlier this year, we conducted enabling works to prepare for phase two of the project's works – the creation of the enhanced road layout, including a widened dual carriageway and improved access for pedestrians and cyclists.

These works involved the removal of two London Plane trees from the traffic island opposite the Sovereign's Pub. Trees and other vegetation removed through the course of the project will be replaced with a new enhanced planting and landscaping scheme.

Due to the complex nature of the utility works required to deliver phases two and three, early preparatory works will be an ongoing requirement through the length of the project. Key works affecting residents, businesses and commuters will be promoted via our website, social media and project newsletter, as and when the information is available.

## ABOUT THE SCHEME

The Victoria Arch widening scheme is a partnership between Woking Borough Council, Surrey County Council, Network Rail and Homes England.

When complete, the once-in-a-generation project will deliver an improved transport infrastructure for pedestrians, cyclists, drivers and rail-users, and unlock existing town centre sites for much needed housing.

PHASES AND DESCRIPTIONS	NEXT STEPS
<b>PHASE 1:</b> Demolition and clearance of the Triangle site, which will provide the land required to deliver phase 2 – see below.	Currently in progress. These works are scheduled to finish in late summer 2021. Or, subject to CPO requirements, in summer 2022.
<b>PHASE 2:</b> Reconfiguration of the highway on the north and south sides of the Victoria Arch bridge, including a widened dual carriageway and improved access for pedestrians and cyclists.	Early enabling works are scheduled to start from autumn 2021.
<b>PHASE 3:</b> Widening of the highway under Victoria Arch bridge and rail deck replacement, which will offer increased height capacity (able to accommodate double decker buses) and off-road access for pedestrians and cyclists.	Early enabling works are scheduled to start from winter 2021/2022.

## MORE INFORMATION

For more information about the Victoria Arch scheme, including how to sign up to receive project update emails, visit [www.woking.gov.uk/victoriaarch](http://www.woking.gov.uk/victoriaarch)



WE ARE UNLOCKING SPACE FOR NEW HOMES

### PROJECT DELIVERY PARTNERS



# INTRODUCING CANALSIDE

## FIRST HIGH-SPEC HOMES IN SHEERWATER

### AVAILABLE TO RENT NOW



**Following the success of Harrington Place, a flagship development in Woking Town Centre, ThamesWey is now ready to release its first high-specification, energy efficient homes in Sheerwater, which once again are aimed squarely at the rental market.**

ThamesWey's latest build forms part of the borough's new Canalside development, which will transform the centre of Sheerwater into a contemporary garden suburb and deliver 1,100 high-quality sustainable homes over the next five years.

Homes within Fairfax Place are available to rent now and are on track to welcome potential new residents this summer.

The new homes within this first release have been designed to give residents a modern spacious home filled with integrated appliances and quality finishes throughout. The floor to ceiling windows and doors let in the maximum amount of natural daylight and fresh air,

and every home has its own private balcony or terrace for relaxation and connection to the outside world.

With outdoor space now a key consideration for renters, this development also has a thoughtfully designed and well-maintained central garden. Hidden from public view and accessible only to residents within this phase, this tranquil space can be used for spending time with friends and family, soaking up the sun's rays or even getting to know the neighbours.

There is a mix of one, two and three bedroom apartments available to rent in Fairfax Place and five contemporary town houses. All come with access to ultra-fast broadband, a must for anyone working from home and an added bonus for those who enjoy gaming or binge watching the latest boxsets.

Other standout features of this high-quality development include covered parking, bicycle storage, CCTV to ensure that residents feel safe and secure both in and around



their new home, and a Development Management Team to look after the communal areas.

Even more attractive however, is the opportunity for residents to save for a mortgage deposit while renting a brand new high-spec home. ThamesWey's 'Earn Your Deposit' scheme helps renters to get a foot on the property ladder through annual deposit contributions which build up over the length of the tenancy (terms and conditions apply).

# ThamesWey

For further details about this exciting new development and available rental opportunities, please visit [fairfaxplace.canalsidewoking.co.uk](http://fairfaxplace.canalsidewoking.co.uk)

## SHEERWATER REGENERATION PROJECT UPDATE

The council's plans to transform Sheerwater into a thriving, sustainable community are progressing well.

Since receiving the green light in April 2019, ThamesWey has completed and handed over the new Eastwood Leisure Centre, delivered the first phase of residential housing (see opposite), and is preparing to start work on the next phase of the project, a multi-million pound mixed-use development.

Taking in the green at the top end of Dartmouth Avenue, St Lukes Court and the site of the former Birch and Pines pub, the next phase will deliver 68 sheltered housing units, an energy centre, a further 56 high-quality homes available for either private sale or affordable rent, 1,000sqm of restaurant and/or retail space and an attractive new central square.

## MORE ABOUT THE EASTWOOD LEISURE CENTRE

Opens to the public September 2021



The Eastwood Leisure Centre opens to the public in September 2021. The main leisure centre building is complete and is already being put through its paces by pupils at Bishop David Brown, which has shared use of the facility. Doors will open to the public later in the year once the exterior ground works are finished and the centre has been fully furnished with the all the latest sports equipment by Freedom Leisure who will be managing the facility.

The new complex has been officially named the Eastwood Leisure Centre in honour of former Woking Borough Council member, Ian Eastwood (pictured above). Ian campaigned passionately for better sports facilities in Sheerwater and two months into his retirement (after 28 years of service), work started on site.

During a recent visit to the leisure centre, Ian, a lover of team sports, particularly football, cricket and grass hockey, said he was "very impressed with the finer details" and praised the quality of the facilities, which meet the required standards for a range of different competitive sports.

Look out for our detailed featured in the next edition of the Woking Magazine.

To keep up to date with the Sheerwater Regeneration Project please go to [woking.gov.uk/sheerwater](http://woking.gov.uk/sheerwater)

**TRANSFORMING**  
**SHEERWATER**

# Ten years of healing through art

**This year, the Women's Support Centre celebrates the tenth anniversary of their Art Awards, New Beginnings. The Woking Magazine explores the history of the centre and a successful decade of restoring health and wellbeing through the medium of art.**

## Women's Support Centre

First established in 2009 and funded by Woking Borough Council, Public Health England, the Office of the Police and Crime Commissioner for Surrey, and Elmbridge Borough Council, the Women's Support Centre offers a women-led, bespoke, holistic support service for women across Surrey.

It has a proven track record in assisting women with a history of criminality and substance misuse lead positive, self-sustaining lives.

The Woking-based charity provides a safe space in which women suffering multiple disadvantages can build trusting relationships which encourage them to explore positive life choices in the future.

A wide variety of specialist support, from domestic abuse to substance misuse, is available, as well as a counselling service. Sessions give women the opportunity to discuss and explore experiences, feelings and concerns in a non-judgmental and non-directive way.

Clients can also benefit from one-to-one support or attend a weekly drop-in session. Help given can include support with housing, accessing benefits, parenting, advocacy at court and signposting to appropriate specialist agencies. Working with local partners, the centre also facilitates prevention groups for young women, focusing on all forms of exploitation, development of healthy relationships and online safety.

The first New Beginnings Art Awards were held in 2011 and have grown in size, attendance and engagement ever since. The awards are an opportunity to showcase the talent of women across the county who may otherwise not have opportunities to participate in the arts and also to

encourage excluded, exploited and disempowered women to explore their feelings and experiences through creative means. An annual exhibition of the works takes place at The Lightbox.

The project is aimed at encouraging and motivating women to engage in honest and reflective communication, and expression of feelings via the pieces they create. It also inspires a commitment to complete the piece and awards a sense of achievement and accomplishment. Furthermore, it gives women the opportunity to showcase their talent and receive feedback from both the community and the judges.

This year's theme is 'My hidden self' and women can apply via the Women's Support Centre website. Exhibition dates are Wednesday 20 October to 28 November 2021, with the launch to be announced on the website in the coming months.

To find out more about the centre or this year's Art Awards, please visit

[www.womenssupportcentresurrey.org.uk](http://www.womenssupportcentresurrey.org.uk)





# No room for hate in our community

**After an unprecedented year of lockdowns and restrictions, incidents of hate crime are sadly on the increase in Woking, but Surrey Police are highly committed to tackling the crimes and pursuing the offenders and call upon Woking residents to help keep our community safe.**



Hate crime comes in many different forms, and is defined as 'any criminal offence which is perceived by the victim or any other person, to be motivated by hostility or prejudice based on a person's race or perceived race; religion or perceived religion; sexual orientation or perceived sexual orientation; disability or perceived disability and any crime motivated by hostility or prejudice against a person who is transgender or perceived to be transgender'.

The devastating effects of such crimes strike at the heart of communities. Police officers are ready to help anyone who has been affected by someone else's prejudice, ignorance or violence and ask that members of the public are vigilant and work with the police to help tackle these crimes, by reporting incidences when they happen to them, or if they witness them happening to others.

## How can I report a hate crime?

You can report hate crime the same way you would report or record any other type of crime.

When reporting a hate crime, you will be asked a number of questions, so try to remember as much detail as possible about what happened to you, or what you witnessed.

The following questions should help guide you:

- When and where did the incident happen?
- What exactly happened?
- What did the perpetrator look like?
- Can you describe any vehicles involved or provide a registration number?

- What happened before or after the event?
- Do you remember if there were any witnesses or security cameras?

## Useful links

If it is an emergency and you fear for your safety, or that of someone else, always call 999 immediately. If it's not an emergency please report the crime in one of the following ways:

- Call **101**
- Online at **www.police.uk/forces**
- Scan the QR code (right)
- Via social media **@WokingBeat** on Twitter and **@WokingPolice** on Facebook
- You can also report hate crime at **www.stophateuk.org**



Stop Hate UK is one of the leading national organisations working to challenge all forms of hate crime and discrimination. Stop Hate UK provides independent, confidential and accessible reporting and support for victims, witnesses and third parties. For 24 hour victim support, call **0800 138 1625**.

Victim Support is a national charity giving free and confidential help to victims of crime, witnesses, their family, friends and anyone else affected. For more information please visit: **www.victimsupport.org.uk**

# A new sanctuary for domestic abuse survivors

**A brand new, purpose-built refuge provides women fleeing domestic abuse with a safe place to go. The Woking Magazine explores the premises with Fiamma Pather, CEO of domestic abuse charity Your Sanctuary.**

“We are very excited that we can offer an enhanced service for survivors at our stunning new refuge” Fiamma says. “We worked with Woking Borough Council, who funded the build, to identify gaps in our service and design a beautiful, modern, fully-furnished building, purpose-built to meet the needs of survivors of domestic abuse.

“Often, women will arrive with their children having fled their homes, with nowhere else to go. The increased capacity allows us to offer them accommodation whilst we work out a long-term solution together”

The new refuge boasts a beautiful children’s play room and garden as well as a large communal lounge for shared activities such as arts and crafts, music and yoga. The self-contained units give each family their own living space and there are offices for Your Sanctuary staff and volunteers.

“Giving women the privacy of their own living space allows us to provide better, tailored help with complex needs such as substance abuse or mental health issues, which is hard to do in a communal space.” Fiamma explains. “Also, for the first time, self-contained units allow us to offer accommodation to women who have older, male children.”

“Many people think that once a woman has fled an abusive situation, she is safe but sadly, the opposite is often true.” Fiamma explains. “Leaving can actually





be the most dangerous time. However, our refuge is fully equipped with secured access, key fob technology, CCTV and panic alarms to ensure the residents' security."

Fiamma describes her vision for the future: "All too often women have left behind their whole life because of a crime committed against them. Sadly, we are still a long way from eliminating domestic abuse but we can help survivors overcome their situation and move on to decent, safe accommodation away from harm, where they and their children can rebuild their lives."

She concludes: "We could not operate our vital service without community support, so thank you to everyone who has given their time, or money, over the years."

More information about Your Sanctuary and the new refuge can be found at [www.yoursanctuary.org.uk](http://www.yoursanctuary.org.uk)

If you are experiencing domestic abuse, call the Your Sanctuary helpline on **01483 776822** or live chat on the website.

Men experiencing domestic abuse can get help via the Your Sanctuary specialist male outreach service.

In an emergency, always dial **999**.



# #WEAREWOKING

TOGETHER

## WOKING, WE'RE COMING FOR YOU!

Woking's stunning multi-million pound town centre transformation, one of the most ambitious developments in the south east, nears completion later this year.

Planned almost a decade ago, the new development marks an exciting new chapter for Woking and will play a pivotal role in future economic recovery, delivering new housing, jobs and business to the heart of the town.

Part of Woking's breath-taking new skyline, two of the town's stunning new towers are on track to welcome their first new residents late this year.

## THE MARCHES

The prestigious, carefully designed residential development, The Marches, takes in both 30-storey and 34-storey towers and boasts 429 studio, one and two-bedroomed apartments across two landmark buildings.

Reflecting a new vision of convenient modern living in an outstanding, accessible location, residents will enjoy all the benefits of town centre living, easy access to the local countryside and just a quick commute to London.



Floor-to-ceiling windows, panoramic views and sky-high balconies, The Marches is a

brilliant blend of comfort and convenience, ease and excitement, all-out-fun and oh-it-feels-good-to-be-home. Find studio, one and two bedroom apartments to rent next to Victoria Place shopping centre from late summer 2021.

Make yourself at home with furnished and unfurnished apartments, top floor resident's lounges, co-working space and 24/7 on-site resident services.

The Marches would be just an empty space without people, which is why we're working hard to help build a thriving community of like-minded residents; those looking for something different and a break from the norm, but never compromising on flexibility, convenience and comfort.

Find out how we're creating the happiest residents in Woking, visit [www.themarcheswoking.com](http://www.themarcheswoking.com)



## MEET DHERAEN...

She's fun, lively and the face of The Marches - meet our Community Manager, Dheraen! Dheraen will be working her magic to bring together every aspect of life at The Marches, from welcoming in our new residents to organising garden terrace yoga sessions.

Dheraen is on the lookout for local businesses who may wish to partner with The Marches. Whether you're a local coffee roaster, stationery

supplier, or just want to chat with us about employment opportunities - we're looking forward to hearing from you.

Dheraen is also really keen on building local relationships and making life for our residents great, so if you or someone else has a great idea on how we can work together, then get in touch!

So why not get in touch with Dheraen at [community.support@themarcheswoking.co.uk](mailto:community.support@themarcheswoking.co.uk)



## HILTON ON THE RISE

As part of the development, Woking will add another four-star international hotel to its portfolio when the new Hilton hotel opens its doors.

Located on the junction of Victoria Way and Church Street West, the newly built hotel offers 189 bedrooms and the largest hotel ballroom in Surrey. The 22nd floor LOFT sky bar commands magnificent views across Surrey and towards London, where its own dramatic skyline can easily be seen.

The culinary experience revolves around OXBO kitchen for all-day dining, inspired by agricultural heritage, love for nature, respect for the land and celebration of togetherness, whilst GLOW lounge & terrace is the perfect setting to meet friends and colleagues providing a barista lounge by day and an evening casual lounge environment with outside area.

**Recruitment to join our fantastic team will start soon, so if you would like to work for the company ranked UK's Number 1 Great Place To Work and have a passion for hospitality we want to hear from you!**

Create your profile by visiting <https://jobs.hilton.com/emea/en> and activate Job Alerts for Hilton Woking now to receive all our exciting new roles!

## AND IT JUST GETS BETTER...

Victoria Place is scheduled to open this autumn, comprising 125,000 sq ft of new retail floor space including a 50,000 sq. ft Marks and Spencer.

With a direct link to the new apartments, the flagship M&S will anchor Henry Plaza beneath a large glass dome which will create an enhanced shopping experience. The development will also bring two new public plazas and an additional 284 parking spaces to Woking and an additional restaurant unit on Commercial Way.



## A GREEN WELCOME TO WOKING

Woking's leafy face-lift continues as installation nears completion on another green wall scaling the entire façade of the newly built Victoria Place car park.

The planted surface covers a whopping 2,000sqm of wall and consists of 475,000 individual plants. Seasonal colour will emerge throughout the year thanks to an array of coloured flowers and foliage dotted throughout the planting scheme, all chosen for their suitability to the vertical growing environment.

In addition to planting along each level of the car park, panels of planters will also stretch the full height of the structure and there will be a further 5,000sqm of green roof. At the very top, a 'blue roof' has been installed to capture and store rain water ready to be reused within the wall's unique irrigation system.

And where reduction of Woking's carbon footprint is concerned, the wall is going to work hard for the town. The plants will improve air quality by trapping pollutants, 20 square metres of living wall is equal to one medium sized tree in its ecological value and will soak up 16,000kg of carbon and produce 11,000kg of oxygen every year.

The impressive structure welcomes visitors to a wildlife friendly town centre, that currently boasts three further green walls located at Duke's Court, which stands at nearly 40m tall and boasts bird and insect houses nestled amongst the foliage, a 75m long feature on High Street and greening of apartments along Commercial Way.





# Discover...

## White Rose Lane Local Nature Reserve

**Take a moment and enjoy the peace and solitude of lush, green woodland in this delightful local nature reserve.**

With just the sound of running water and birdsong to accompany you along a path that meanders idly alongside the Hoe Stream, it is easy to forget that you are so close to the hustle and bustle of Woking town centre.

White Rose Lane is a habitat rich in biodiversity, with

tall alder trees thriving in the damp conditions and an abundance of wildlife calling the area home.

### What can I see?

The reserve is dedicated for wet alder woodland, located beside the Hoe Stream in Woking. Wildlife is



## White Rose Lane Local Nature Reserve

### Adjacent to White Rose Lane.

Nearest postcodes for reference are **GU22 8JB** or **GU22 7LN**, although neither of these are suitable for satellite navigation.

**By foot:** There are two pedestrian entrances into the nature reserve. One is on White Rose Lane, close to the junction with Knowl Hill (please note this is not an official public footpath) and the other via a footbridge accessed from the Hoe Stream public footpath.

**Parking:** Very limited parking available at Coniston Road GU22 9HU. We ask that this option is used by visitors with impaired mobility only. Follow the sign-posted public footpath north to reach the accessible footbridge entrance.

Alternatively, extend your walk and enjoy three hours free parking with an approximate 1.5 mile stroll from Woking Park, Kingfield Road GU22 9BA. Park in the car park signed Additional parking for public use. From there walk past the skate board park to join the stream. Follow the Hoe Stream, crossing a stile into Old Woking Cricket Club. Continue to follow the river around the outside of the cricket pitch until you reach a second stile. Cross the stile and follow the path until you reach the timber footbridge providing access to the nature reserve.

**Public transport:** The nearest bus stop is on Old Woking Road, adjacent to Knowl Road and numerous buses serve Woking Park. Check [www.surreycc.gov.uk](http://www.surreycc.gov.uk) for updated timetables.

**Accessibility:** There are a number of uneven and narrow sections. During wet weather the paths can be extremely muddy. If taking the extended walk from Woking Park, there are two tall stiles to cross at Old Woking Cricket Club.

**Opening times:** The reserve is always open.

**Facilities:** There are no facilities available, but if starting your walk from Woking Park you can access public toilets and baby changing facilities within the park and Leisure Centre and stop to buy refreshments from the park kiosk or the Leisure Centre café, subject to opening times.

**Best time to visit:** The reserve is pretty all year round, but is especially nice in spring and early morning or evening, when the woodland is alive with the sound of birdsong.



in abundance and avid spotters might be lucky enough to see owls, bats, deer, frogs, toads and grass snakes as well as a host of water fowl and other birds, including great tit, blackcap, robin and wren. Various species of rare fungi can also be found growing in the wooded area.

Although not technically part of the local nature reserve, there are also seasonal ponds, mixed woodland and open meadow on the southern side of the river, should you wish to extend your visit.

### What can I do?

Join the Woking Biodiversity Group and help continue the fantastic work that volunteers have been doing to improve biodiversity by clearing invasive Himalayan Balsam. If left uncontrolled, it would spread rapidly, overshadow and outcompete native species.

#### Woking Biodiversity Partnership

The Woking Biodiversity Partnership is a group of local residents with a keen interest in preserving and enhancing Woking's green spaces for the benefit of biodiversity. Visit [www.wokingbiodiversity.wordpress.com](http://www.wokingbiodiversity.wordpress.com) to find out more.

White Rose Lane Local Nature Reserve is owned and managed by Woking Borough Council and patrolled by Thames Basin Health Partnership wardens. Explore more sites by visiting [www.tbhpartnership.org.uk](http://www.tbhpartnership.org.uk)

#### Want us to 'Discover' somewhere in Woking?

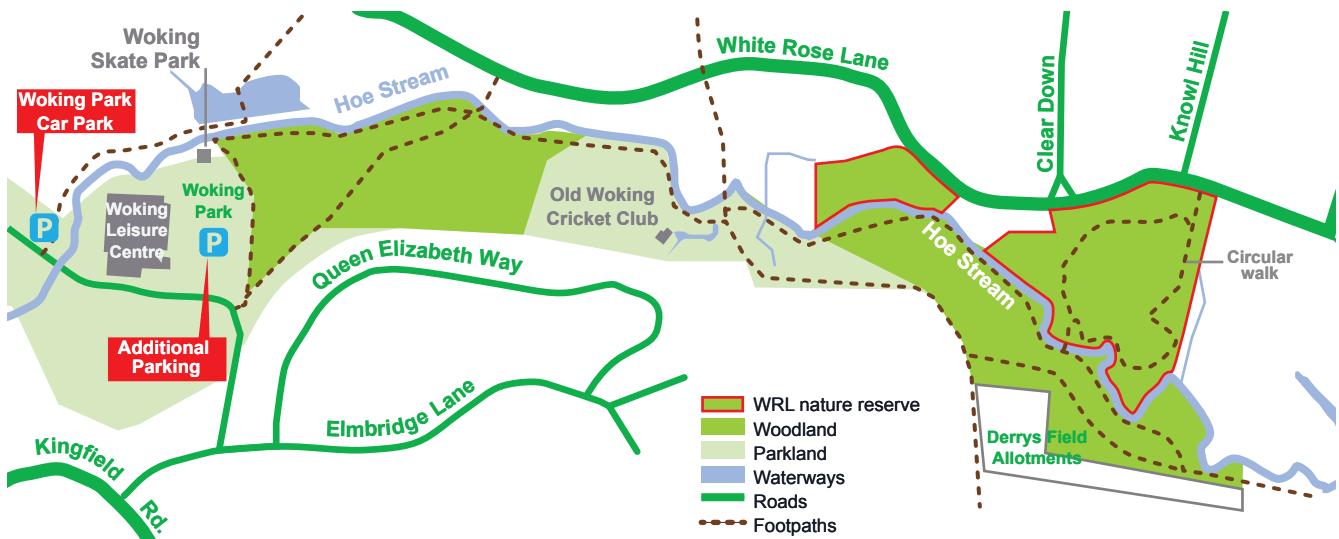
If you have a place you love to visit that you want to share, we'd love to hear from you!

Get in touch by emailing

[marketing.communications@woking.gov.uk](mailto:marketing.communications@woking.gov.uk)

## Rules and regulations

- Keep your dogs under control.
- Please dispose of your dog poo and litter responsibly using one of the dog poo bins found along the route or take it home with you if you do not pass a bin.
- Close all gates behind you.
- Do not light fires or barbecues anywhere.
- Unlicensed drone activity is prohibited.
- Follow the Countryside Code at all times and respect wildlife.
- Please adhere to the latest government social distancing guidelines at all times.



The top of the page features a vibrant illustration of a sustainable city. On the left, there are rolling green hills with various trees, a bicycle, and a car with a lightning bolt symbol. In the center, a large green circle contains the text 'PLANET WOKING'. To the right, a cluster of colorful buildings in shades of green, blue, and white represents a modern urban landscape. The background is a light blue sky with soft white clouds.

**PLANET  
WOKING**

# PLANET WOKING

**This is an important year for climate and ecological action. In November 2021, the UK will host a United Nations climate change conference known COP26.**

Organisers will use this meeting to urge everyone to work together to avoid the worst impacts of climate change and to commit to reaching net zero carbon emissions as soon as possible with significant reductions by 2030.

Climate change is a global issue but one that can be tackled locally. Planet Woking was launched in September 2020 to raise awareness of local action being taken by the Council and its partners to meet our carbon neutral goals; but also to inspire and encourage you - the local community - to join us and continue to play your part in looking after our environment.

**Highlights of action we've taken since declaring a climate and ecological emergency include:**

- We've reduced our corporate emissions by 11% since 2018/19;
- We're quadrupling the number of charging points for electric cars during 2021/22;
- Action Surrey's Green Jump Surrey project has been delivering over £9m in government funded household energy efficiency measures across the county;

- We're continuing to work with partners to protect our local habitats and wildlife with heathland conservation work and initiatives such as the Great Crested Newt project; rain gardens pilot and the installation of living green walls to boost urban biodiversity;
- A flood alleviation scheme at Sutton Green has protected 25 properties from surface water flooding.

**We're often asked how residents can do their bit for the environment. Here are our top tips:**

- Home improvements like loft and cavity wall insulation and switching to LED lightbulbs cut carbon, reduce energy use and save money. Find out more at [www.actionsurrey.org](http://www.actionsurrey.org)
- A family of four could save £70 a month by reducing the amount of food they throw away. Avoid wasted food by planning meals, freezing food and using leftovers.
- Switch to a renewable energy tariff. Find out more at <https://energysavingtrust.org.uk/advice/switching-your-energy-supplier/>

- Repair that favourite top or furnish your home for less by sourcing preloved furniture through the Surrey Reuse Network. Find out more at [www.surreyep.org.uk/reduce-reuse-recycle/](http://www.surreyep.org.uk/reduce-reuse-recycle/)
- Plant flowers to support bees and other pollinators. Find out more about wildlife gardening and supporting species in decline at [www.surreywildlifetrust.org/act-wildlife/helping-wildlife-home](http://www.surreywildlifetrust.org/act-wildlife/helping-wildlife-home)
- Ditch the car for short journeys – by walking, scooting or cycling you can cut carbon whilst getting active.

For more ideas and inspiration, check out [www.planetwoking.co.uk](http://www.planetwoking.co.uk) and subscribe to our newsletters for all the latest local environmental news and events.

There's no doubt that zero carbon will be challenging, but by working together to make changes to the way we live, no matter how small, we can all make a difference to Planet Woking.

**FOR MORE INFORMATION:**

email: [hello@planetwoking.co.uk](mailto:hello@planetwoking.co.uk) or visit: [www.planetwoking.co.uk](http://www.planetwoking.co.uk)

# Welcome back to The Lightbox

**In line with government guidelines, The Lightbox gallery and museum has now reopened with an exciting programme of exhibitions and events to suit all tastes.**

Highlights include; **Celebrating Michael Ayrton: A Centenary Exhibition** mounted in collaboration with The Ingram Collection and curated by Andrew Lambirth (until 8 August), **NightShaking** with The Ingram Collection (10 July to 19 September) featuring contemporary artists Dr Chantal Powell and Dean Melbourne who work in the fields of mythology, alchemy and deep psychology.

There will also be a photographic exhibition called **'Our generation' by Mad Mods and a Camera** (31 July to 22 August) exploring contemporary mod culture in Britain and the annual Centrepiece exhibition, showcasing artworks made by local primary school pupils in response to 'Hands of the Sculptor' by Eduardo Paolozzi.

Woking's Story and the associated heritage displays have also reopened with new health and safety measures in place for interactive displays.

For those looking to explore their creativity, the Art and Wellbeing programme once more presents in-person workshops and activities for adults, families and early years.

## Your safety is our priority

Social distancing measures will be in place throughout the building. The safety measures follow government recommended guidelines. The Lightbox has been awarded the 'Good To Go' Visit England seal of approval for reopening.

Visitor numbers will be limited to ensure everyone's safety. For Main and Upper Gallery exhibitions it is advised that all visitors, including members pre-book to secure their space. Find out more and plan your visit at [www.thelightbox.org.uk](http://www.thelightbox.org.uk)

**Mad Mods and a Camera © the Lightbox**

Summer holiday events for families include free drop-in activities where you can make your very own Olympic torch, mini footballers and cups and ball games. Bubble Friday sessions also return where you can enjoy constructing a variety of bubble makers and playing in the sunny courtyard.

**Lightbox Lates** are also set to return with a bang in 2021! Don't miss the last Thursday of the month (29 July, 26 August and 30 September) where free admission is offered to all exhibitions from 5pm to 8.30pm. And you can join The Lightbox Book Group, Café Scientifique or Write Out Loud - Woking's very own poetry open mic evening.

And don't forget, Season's Café is open daily from 10am to 3pm serving a delicious seasonal menu featuring toasties, panini's, jacket potatoes, sweet treats and kids' boxes. Outdoor seating is available in the beautiful courtyard overlooking the Basingstoke Canal.



**Michael Ayrton, Roman Window, 1950, Oil on canvas © Swindon Museum and Art Gallery - The Lightbox**



**Bubble Fun © The Lightbox**



# Why don't you... join the Army Cadets?



**Every year thousands of young people join the Army Cadets for fun, friendship, action and adventure. So if you are between 12 and 18 years old and up for a challenge you'll go further with the Army Cadets.**

Being an Army Cadet is also about investing in your future by learning a wide range of skills and, if you want, gaining qualifications.

Cadets develop courage, self-discipline, respect, loyalty, integrity and commitment. A recent study revealed that being a cadet improves wellbeing, confidence, resilience, independence and employability.

Cadets are not expected to join the Army after being an Army Cadet. It's simply an organisation for young people who want to live an awesome lifestyle!

Army Cadets are also aligned with the Duke of Edinburgh's awards (DofE), so if you have completed the DofE programme, that will give you a flavour of what to expect from an Army Cadets expedition. You can even complete your DofE through the Army Cadets.

## How does the Army Cadets work?

Cadets join a group called a detachment. That's your Army Cadet crew who you get to know well through your adventures. You bond with each other by taking part in activities and spending time at summer camp and on expeditions.

## How often would I go?

Detachments meet one or two evenings a week and do adventurous training and camps on weekends and during school holidays.

## What does it cost?

Cadets pay a very small annual subscription for their uniform and access to incredible adventures. Weekends and camps are heavily subsidised; money shouldn't be a barrier to joining.

### What will I do?

- Adventurous training
- Learning to navigate
- Developing survival and first aid skills
- Learning to safely use a weapon
- Summer camps
- Joining a band
- Kayaking, climbing and mountaineering
- Making life-long friends

### What could I get involved in?

- STEM camp
- Summer camps
- Community activities
- Parades on Armistice Day
- Adventurous training in the UK and abroad
- Duke of Edinburgh's Awards

### Interested in being an adult volunteer?

Army Cadets is run by adult volunteers from all walks of life. It's an opportunity to inspire the next generation of citizens, take part in outdoor adventures and even gain new qualifications and skills.

To join the adventure or find out how to become an adult volunteer, visit

**[www.armycadets.com/nofilter](http://www.armycadets.com/nofilter)** or find the Army Cadets on Twitter, Instagram, Facebook or YouTube.





---

# Discover our unique dementia care

So many things define us as individuals, but dementia doesn't have to. We see the person behind it, and help them live the life they want, to the full. As the only care home group with its own accredited City and Guilds dementia training 'My World', innovative dementia friendly design, and support for the whole family, you can trust that we go further.

Our care  
home is open  
for viewings

Call us on freephone 0808 223 5401  
Find us online [caringhomes.org/horsell-lodge](https://caringhomes.org/horsell-lodge)  
Kettlewell Hill, Woking, Surrey GU21 4JA

**Horsell Lodge**



CARING HOMES



**JACKSON-STOPS**

**Property experts since 1910**

**THE NATIONAL  
ESTATE AGENTS  
LOCALS RECOMMEND**

Contact us to for a free valuation or any property advice.  
01483 322135      [woking@jackson-stops.co.uk](mailto:woking@jackson-stops.co.uk)