

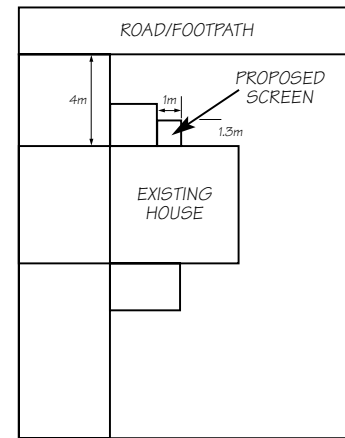
**SKETCH PLAN OF THE PROPOSED ENCLOSURE INCLUDING DIMENSIONS (METRIC UNITS)**

Please produce a sketch plan showing how you intend to create your screen.

Please provide dimensions and a description of the type of materials you plan to use.

**Remember:**  
a fence or enclosure of this type can be a maximum of 1 metre in height where it is adjacent to a road or footpath and can be up to 2 metres in height in any other case within the boundary of the house.

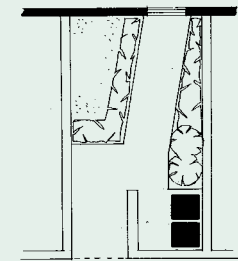
Example:



PD RIGHTS REMOVED?	PERMISSION REQUIRED?
YES <input type="checkbox"/> NO <input type="checkbox"/>	YES <input type="checkbox"/> NO <input type="checkbox"/>
(FOR OFFICE USE)	

**LANDSCAPING IDEAS – Enclosed Boundary**

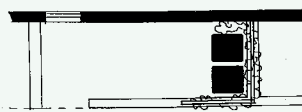
**Enclosed Boundary – Deep Frontage**



**Plan**

- Boundary wall extended and turned to form enclosure
- Shrub planting next to bin area to screen from view

**Enclosed Boundary – Shallow Frontage**

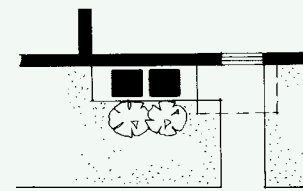


**Plan**

- Trellis panels attached to existing wall or fence
- Climbing plants to soften appearance
- Paving will assist moving the bins for collection

**LANDSCAPING IDEAS – Open Estate**

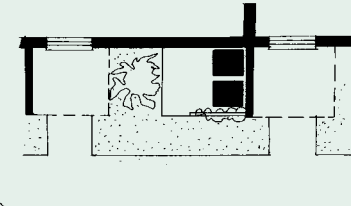
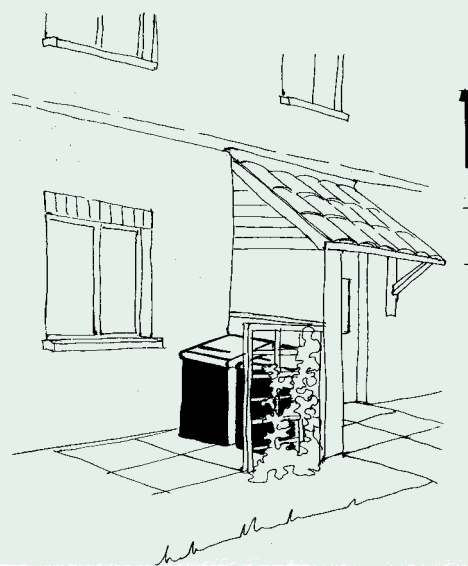
**Open Estate – Shallow Frontage**



**Plan**

- Bins positioned close to wall or other structure
- Fence or trellis panels to screen from view
- Climbing plants to soften appearance

**Open Estate – Shallow Frontage**

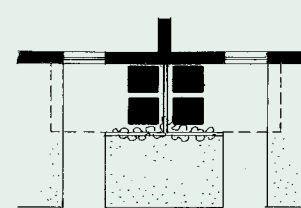
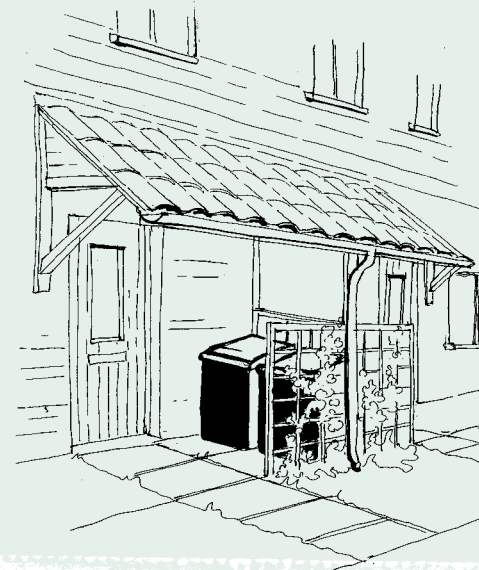


**Plan**

- Bins positioned close to wall of house in a convenient location
- Use paving to define storage area
- Shrub planting to screen from view

**LANDSCAPING IDEAS – Open Estate**

**Open Estate – Medium Frontage**



**Plan**

- Bins positioned under entrance porch canopy
- Attach trellis panels to provide a screen
- Climbing plants to soften appearance



**PLANNING ADVICE NOTE**

**SCREENING FOR WHEELED BINS**

Part of the  
**CLIMATE CHANGE STRATEGY**  
for WOKING BOROUGH COUNCIL



## INTRODUCTION

Woking Borough Council has adopted a **waste collection service** which uses twin wheeled bins to **cut down on the amount of waste** that the Borough sends to landfill every week.

By March 2006, the majority of households in the Borough will have two wheeled bins, a **black** one for general waste and a **black one with a blue lid** for recyclable waste. The bins will need to be put out on alternate weeks at the boundary of the property on the morning of collection.

This leaflet has been prepared to offer information and advice on how to screen your bins should you wish to do so. It deals only with issues related to screening and does not cover details about the service itself.

For further information about how the wheeled bin service works or to discuss specific issues relating to the bins, please contact Woking Borough Council's **Customer Services** on **01483 755855**.

## ABOUT YOUR BINS

Each wheeled bin has a 240-litre capacity and the following dimensions:

Height = 107cm

Width = 62cm

Depth = 75cm



Because the Council's bins are only 107cm high, they can be easily screened by a hedge, small fence, wall or other form of enclosure.

**Note:** in some cases, planning permission may be required to erect screening. See following pages for further information.

## STORING YOUR BINS

If you are intending to create a bin storage area, it is recommended that you lay a hard surface to help move the bins on collection day.

In many cases, it is preferable to store the wheeled bins to the side or rear of the property. However, if it is only possible to store bins at the front – for example in the case of terraced houses without side access – you may find it easier to screen the bins while still maintaining access to them.

## CREATING A NATURAL SCREEN

Hedging and vegetation can provide a **good natural screen** that would not require planning permission, provided that it is not enclosing land which forms part of an open plan estate. If your property already has a boundary hedge, it may be more attractive to plant an additional line of matching hedging instead of constructing a solid structure such as a fence or a wall.

Plants can be used to good effect when creating a natural screen around a bin storage area. When thinking about which plants to use, careful thought needs to be given to the orientation of the property, the supporting structures that are needed for the plants to grow, the season of flowering and the level of maintenance required.

Some suggestions of plant types are listed below.

## CLIMBING PLANTS:

Honeysuckle, Flowering Quince (grow against a wall or fence), Golden Hop, Crimson Glory Vine, Passionflower, Clematis Clematis (macropatella) or Clematis Alpine (spring flowering), Clematis Jackmanii (summer flowering), Clematis Orientalis, or Tangutica (autumn flowering), Clematis Cirrhosa (winter flowering), Star Jasmine, Cup and Saucer Vine.

## SELF CLINGING PLANTS:

Climbing Hydrangea (good for north facing positions), Virginia Creeper, Ivy (common ivy).



## PLANTS TO MAKE AN IMPACT:

Bamboo (not invasive), Stag Horn, Japanese Angelica tree, Grasses, Japonica Fatsia, Yucca.

## FOR A DRY, SUNNY POSITION:

Rock Rose, Hebe Great Orme, Green Globe.

## OUT OF DIRECT SUN:

Christmas Box, Skimmia Japonica.

## ERECTING A SCREEN

If hedging or vegetation alone is not suitable, you may wish to consider erecting a small fence, wall or other form of enclosure. Where the property has an enclosed boundary it is best to make the screen out of materials which match the existing front or side boundary such as brick wall, close boarded fence or hedging.

This will need to be slightly higher than the bins to screen them from view – approximately 150cm.

Where the property has an open frontage, particularly if it is within an open plan estate, constructing the screen close to the building and to match its appearance is preferable to constructing an isolated structure.

The materials and design of the enclosure should closely relate to the design of the building, where possible.



## PLANNING PERMISSION

You do not need to obtain planning permission for the erection of an enclosure of up to 1.0 metres at the highway or footpath boundary, or up to 2 metres elsewhere within the boundary of the property.

However, a number of "open estate" developments will require planning permission for the erection of an enclosure at the front of the property. There may also be restrictions if your property is a Listed Building or is within a Conservation Area.

If you are in any doubt about whether or not you need planning permission, please complete the form attached to this leaflet and send it back to Woking Borough Council at the address shown, or drop it off in person at the Planning Counter. Alternatively, you can write a letter detailing your plans for screening the bins and send it to the address shown at the bottom of this leaflet.

## FURTHER INFORMATION

All enquiries relating to the screening of wheeled bins should be directed to:

The Borough Planning Officer  
Civic Offices  
Gloucester Square  
Woking  
Surrey  
GU21 6YL

Telephone: **01483 743843**

E-mail: [developmentcontrol@woking.gov.uk](mailto:developmentcontrol@woking.gov.uk)

[www.woking.gov.uk](http://www.woking.gov.uk)

You can also drop your information off at the **Planning Counter** on the 1st Floor of the Civic Offices in Woking.

## IS PLANNING PERMISSION REQUIRED FOR A SCREEN/ENCLOSURE?

Name: \_\_\_\_\_

Address: \_\_\_\_\_

Post Code: \_\_\_\_\_

Telephone No: \_\_\_\_\_

Description of Proposed Work: \_\_\_\_\_

Materials to be Used: \_\_\_\_\_

Please return to: Borough Planning Officer, Planning, Woking Borough Council, Civic Offices, Gloucester Square, Woking, Surrey GU21 6YL

The Council will endeavour to respond within 14 days of receipt.