

## PLAY STRATEGY ACTION PLAN

### STRATEGIC PLANNING AND POLICY

Action	Responsible Person / Organisation	Due Date	Benefits/Measures	Resources	
1	Seek to identify suitable sites for new children's play provision including potential for use of school grounds. Implement proposals to provide new children's play areas in those parts of the Borough currently identified as having unmet demand. (Brookwood Village, Pyrford Village, Barnsbury, Goldsworth East, Byfleet north of Parvis Rd, Maybury Estate).	WBC-CCD team/Russell Leisure	First phase by April 2009 i.e. Barnsbury and Byfleet. Remainder dependant upon availability of land.	Greater opportunities for all children to access play facilities. Increase in number of new play areas. Increase in number of children with access to play facilities within 400m of home.	£350k Investment Programme
2	Undertake further consultation to identify whether there is unmet demand for children's play in additional 13 areas in the Borough not covered by existing provision.	WBC - CCD, Marketing and Comms, Play Partnership.	By March 2008	Ensures gaps in provision are identified. Completion of survey.	Requires input from Community Services Customer Support Team and Play Partnership.
3	Undertake needs assessment for multi use games areas provision for young people at St Johns, Horsell, Sussex Road and Westfield and implement provision where necessary.	WBC-CCD, Marketing and Comms, Play Partnership.	By April 2008	Ensures gaps in provision are identified	Requires input from Marketing and Comms. Implementation in the order of £280k.
4	In appropriate cases seek to ensure that new developments include play provision within 400m or 15 minutes walking distance if no other existing provision exists. Review trigger for completion and transfer of new play areas to Council in order to avoid delays and ensure management and	WBC - CCD and Planning Policy	As part of LDF-2008	Ensures provision of play areas remains appropriate to level of demand. Number of new	Requires input from CCD Team

Action	Responsible Person / Organisation	Due Date	Benefits/Measures	Resources
maintenance arrangements are in place.			play areas increased commensurate with new development.	
5 Where play provision is not provided on site within new residential developments, monies should be sought to upgrade existing play facilities within vicinity	WBC /Developers	As part of existing local Plan and LDF-2008	Ensures provision of play areas remains appropriate to level of demand. Range of equipment in play areas and scale of provision increased commensurate with new development.	Requires consistent application of standards to response from CCD Tea on planning applications
6 Investigate opportunities to incorporate features which will meet needs for informal play in new developments/redevelopments.	WBC -Planning	As part of existing process and LDF in 2008	Play provision is integral to layout of new developments and sited appropriately. Opportunities for informal play created. Greater levels of satisfaction with provision on new developments. Reduction in incidence of anti-social behaviour.	Requires consistent application of standards to response from CCD Team on planning applications

Action	Responsible Person / Organisation	Due Date	Benefits/Measures	Resources	
7	Monitor and review play strategy. Adopt new performance indicators for play.	WBC CCD Team, PlayPartnership	2012	Ensures strategy remains relevant. Number of actions completed.	Support from Customer Support Team
8	Acknowledge the need to consider sustainability and innovation in planning new facilities and programmes	WBC CCD Team /Developers /Contractors	2007	Ensures strategy is in line with Council's sustainability agenda. Sustainability criteria met (no.)	Existing Staff resources

### **PARTICIPATION**

Action	Responsible Person / Organisation	Due Date	Benefits/Measures	Resources
--------	-----------------------------------	----------	-------------------	-----------

Action	Responsible Person / Organisation	Due Date	Benefits/Measures	Resources
<p>9</p> <p>Establish multi use games areas in line with Green Spaces Development plan proposals at Knaphill (Waterers Park) Old Woking (St Peters Recreation Ground), West Byfleet and Byfleet as priorities. Upgrade existing multi use games area at Goldsworth Park Recreation Ground. Establish climbing boulders/walls at Knaphill (Waterers Park), Woking Town Centre and Byfleet.</p> <p>Provide fitness facilities at Town Centre (possibly through Ypod, or Woking Park as nearest suitable sites.)</p> <p>Provide new Cricket Nets at Woking Park and Goldsworth Park.</p> <p>Provide new skate park based around existing facilities at Goldsworth Park Recreation Ground and Boundary Road (to meet need expressed at town centre). Provide new skatepark at Sheerwater Recreation Ground.</p> <p>Explore opportunities to link the provision of equipment which improves fitness in children and young people with provision for adults-e.g. establishing green gyms.</p> <p>Upgrade Youth Shelters at Goldsworth Park and Sheerwater. Keep need for additional shelters under review</p> <p>Provide 'low key' facilities in remoter areas of the Borough such as Sutton Green, Brookwood and Mayford, subject to establishing need. To include basketball/football goals and youth shelters.</p>	<p>WBC –CCD /Husson UK /SCC Youth Service /YPod</p> <p>WBC/Ypod/SCC</p> <p>WBC/Husson/SCC Police Service</p> <p>WBC//Husson</p> <p>WBC /Ypod /SCC /PCT</p> <p>WBC-Health and Well being/CCD Teams</p> <p>WBC/Police</p> <p>WBC/Residents Groups</p>	<p>3 New Multi Use Games Areas by June 2008</p> <p>Knaphill by June 2008</p> <p>By June 2008</p> <p>By June 2008 at Woking Park By June 2009</p> <p>By June 2008</p> <p>By June 2009</p> <p>By June 2009</p>	<p>Increased satisfaction with provision amongst young people. Improved health and well being. Reduction in fear of crime.</p> <p>Number of new initiatives.</p> <p>Number of young people who have access to or use new facilities.</p> <p>Decline in number of reported incidents of anti-social behaviour in vicinity of new facilities</p>	<p>Big Lottery Funding plus s106 £210,000</p> <p>£45k Investment Programme / S 106 Monies</p> <p>£200k Investment Programme / S 106 monies</p> <p>£15k-see external funding/S 106 monies</p> <p>£25k –seek external funding /Investment Programme /Section 106 monies</p> <p>10k Investment Programme</p> <p>£10k Investment Programme</p>

Action		Responsible Person / Organisation	Due Date	Benefits/Measures	Resources
10	Consider needs of all users when undertaking refurbishments/constructing new play areas and youth facilities and include appropriate provision for those with special needs. Ensure that those with special needs are involved at the initial planning and detailed design stages where appropriate.	WBC/Russell Leisure	2007/2008	Increased understanding of barriers to access for people with disabilities/special needs and identification of measures to increase access  Increase in number of users with disabilities/special needs	Part of Refurbishment Process
11	Develop programmes which encourage safe adventurous play in natural environments e.g. wooded areas/open spaces for bmx/trial bikes and other activities.To include development of volunteer network. Ensure that those with special needs are involved at the initial planning and detailed design stages where appropriate.	WBC/SCC-Youth Development Officer/YPod	2008/09	Increased access to, enjoyment of and understanding of semi natural green spaces. Increase in number of children and young people who are satisfied with play provision. Reduction in levels of anti-social behaviour.	Monies available through Big Lottery from Playful ideas programme possibly up £200k
12	Continue to undertake access audits at all sites and implement proposals to improve access as part of playground refurbishment proposals	WBC/RoSPA Part of ongoing programme	Annually	Increased understanding of barriers to access for people with disabilities/special needs and identification of measures to increase numbers.	From Revenue Budgets
13	Develop programmes of activity at play facilities for children and young people and within open	WBC Children's Activity Co-	2008/09	Increase in number of visits by those with	From existing

Action	Responsible Person / Organisation	Due Date	Benefits/Measures	Resources
<p>spaces in order to encourage participation, social interaction, develop self confidence and reduce anti-social behaviour through promoting responsible play. To include establishing street basketball/soccer programmes and skills development at skate parks and multi use games areas.</p>	<p>coordinator/Youth Development Officer/SCC</p>		<p>disabilities/special needs.</p> <p>Increased levels of activity in children and young people.</p> <p>Increased social interaction and development of community spirit.</p> <p>Reduction in incidence of vandalism.</p> <p>Increased levels of satisfaction with opportunities available for play activity.</p>	<p>revenue budgets</p>

## QUALITY

Action	Responsible Person / Organisation	Due Date	Benefits/Measures	Resources
14 Complete existing programme of playground improvement /refurbishments at Bonsey Lane and Loop Road.	WBC CCD Team, Russell Leisure	By April 2008	Increased range of opportunities for play at these sites. Improved access for those with disabilities/special needs  Increased numbers of visitors and user satisfaction.	£100k
15 Undertake next phase of play area improvement/refurbishment programme to include Byfleet Recreation Ground (including paddling pool), Horsell Moor, Queen Elizabeth Gardens, Oakfield, Lakeview, Goldsworth Park Recreation Ground, Westfield Avenue, Sutton Green and Woking Park.	WBC-CCD Team / Russell Leisure	By April 2008	Increased range of opportunities for play at these sites. Improved access for those with disabilities/special needs. Maintenance of existing assets  Increased numbers of visitors and user satisfaction.	£700k
16 Undertake programme of refurbishments to existing equipment provision for young people	WBC / Husson UK	By April 2008	Maintenance of existing assets.  Increased user satisfaction.	£350K
17 Continue with current programmes of maintenance and inspection and keep under review to ensure community needs are met. Monitor impact of dog	Serco WBC Neighbourhood Team Animal Warden	Ongoing	Maintenance of fabric and safety of existing assets.	Included in revenue budgets

	fouling on play areas and recreation grounds and encourage a more responsible attitude by dog owners where necessary.			Increased user satisfaction	
18	Tackle misuse and vandalism in a number of ways including ensuring that the choice of equipment and location of facilities takes into account the impacts of vandalism and antisocial behaviour. Under the neighbourhood engagement agenda work with and support communities in becoming more involved in managing and monitoring children's and youth play facilities.	WBC CCD Team/Play Providers/Neighbourhood Team	By April 2008	Reduction in level of vandalism. Development of community spirit.  Increase in levels of satisfaction with provision. Decrease in number of days equipment is out of use.	Use of existing staff resources

## MARKETING AND COMMUNICATION

Action	Responsible Person / Organisation	Due Date	Benefits/Measures	Resources	
19	Continue to undertake extensive consultation with users and residents as integral part of play area refurbishment programme	WBC/Russell Leisure/SCC/Police	April 2008	Designs and layouts meet community needs.  Increase in levels of satisfaction.	Included in Refurbishment Cost
20	Undertake consultation with users and residents in development of outdoor facilities for young people	WBC Customer Support/CCD Team/Play Partnership	April 2008	Designs and layouts meet community needs.  Increase in levels of satisfaction.	Included in facilities Development
21	Undertake regular user surveys to determine patterns of use and barriers to participation.	WBC Customer Support/CCD Team/Play Partnership	Every 2 Years from 2007	Increased awareness of patterns of use and barriers to access/participation.  Increased participation in play activity by all sectors of the community.	£5k From Revenue Budgets
22	Undertake surveys to evaluate success of new/refurbished provision-i.e. satisfaction levels and numbers of users.	WBC Customer Support/CCD Team/Play Partnership	April 2008	Increased understanding of community needs. Improved planning of new facilities.  Increased levels of use and satisfaction.	£5k From Revenue Budgets
23	Promote facilities and programmes of activity using a variety of methods including web sites and brochures	WBC Customer Support/CCD Team/Connexions/Play Partnership	From 2007	Greater awareness in community of facilities and programmes available.	From existing budgets

				Increased levels of participation.	
--	--	--	--	------------------------------------	--

## Appendix A - Play Areas as at March 2007

	Site	Type	Condition	Range	Comments
1	Alpha Road	LEAP	Good	Good	Play Area less than 10 years old
2	Bonsey Lane	LEAP	Poor	Poor	Part of Phase 1 refurbishment / improvement programme yet to be completed in 2007
3	Boundary Road	NEAP	Good	Good	Refurbishment / Improvement Completed
4	Byfleet Toddler	LEAP	Fair	Fair	Included in second phase of refurbishment/improvement programme 2007/08
5	Byfleet Junior	LEAP	Fair	Fair	Included in second phase of refurbishment/improvement programme 2007/08
6	Connaught Crescent	LEAP	Good	Good	Refurbishment/Improvement Completed
7	Coresbrook Way	LEAP	Good	Good	Play Area less than 10 years old
8	Cubitt Way	LEAP	Good	Good	Play Area less than 10 years old
9	De Lara Way	LEAP	Good	Good	Refurbishmentimprovement Completed
10	Goldsworth Park	NEAP	Fair	Good	Included in second phase of refurbishment/improvement programme 2007/08
11	Hampton Close	LAP	Good	Good	Play Area less than 10 years old
12	Hartshill Walk	LAP	Good	Good	Play area less than ten years old
13	Horsell Moor	LEAP	Fair	Fair	Included in second phase of refurbishment/improvement programme 2007/08
14	Lakeside	LEAP	Poor	Fair	Included in second phase of refurbishment/improvement programme 2007/08
15	Lakeview	NEAP	Good	Good	Refurbishment/Improvement Complete
16	Lidstone Close	LEAP	Good	Good	Refurbishment/Improvement Completed
17	Loop Road	LAP	Poor	Poor	Part of Phase 1 refurbishment/improvement programme

	Site	Type	Condition	Range	Comments
					yet to be completed in 2007
18	Mayford Rec	LEAP	Good	Good	Refurbishment/improvement Completed
19	Oakfield	LEAP	Fair	Poor	Included in second phase of refurbishment/improvement programme 2007/08
20	Percheron Drive	LEAP	Good	Good	Play Area less than 10 years old
21	Pyford Common	NEAP	Good	Good	Refurbishment/Improvement Completed
22	Queen Elizabeth Gardens	LEAP	Fair	Fair	Included in second phase of refurbishment/improvement programme 2007/08
23	St John's Lye	LEAP	Good	Good	Refurbishment/Improvement Completed
24	St Peter's Recreation Ground	NEAP	Good	Good	Refurbishment/Improvement Completed
25	Sanway Road	LEAP	Good	Good	Refurbishment/Improvement Completed
26	Sheerwater Recreation Ground	NEAP	Good	Good	Refurbishment/Improvement Completed
27	Southwood Avenue	LEAP	Good	Good	Refurbishment/Improvement Completed
28	Sussex Road	LEAP	Good	Good	Refurbishment/Improvement Completed
29	Sutton Green	LEAP	Poor	Fair	Included in second phase of refurbishment/improvement programme 2007/08
30	Vale Farm Road	LAP	Good	Good	Play Area less than 10 years old
31	Walton Court	LEAP	Good	Good	Refurbishment/Improvement Completed
32	Waterers Park	LEAP	Good	Good	Refurbishment/Improvement Completed
33	West Byfleet Recreation Ground	LEAP	Fair	Fair	Included in second phase of refurbishment/improvement programme 2007/08
34	Wheatsheaf Recreation Ground	LEAP	Good	Good	Refurbishment/Improvement Completed
35	Westfield Common	LEAP	Fair	Poor	Included in second phase of refurbishment/improvement programme

	Site	Type	Condition	Range	Comments
					2007/08
36	Woking Park	NEAP	Fair	Good	Included in second phase of refurbishment/improvement programme 2007/08
	<b>Play Areas to be adopted as at March 2007</b>				
1	Cavell Way	NEAP	Good	Good	Due to be transferred to Council in 2007
2	Strathcona Gardens	LEAP	Good	Good	Due to be transferred to Council in 2007
3	Lorne Gardens	LAP	Good	Good	Due to be transferred to Council in 2007
	<b>Play areas not in council ownership</b>				
1	Waitrose, Goldsworth Park	LAP	Good	Good	

## **Appendix B: Play Area Definitions – National Playing Fields Association 6 Acre Standard**

### **LOCAL AREA FOR PLAY-LAP**

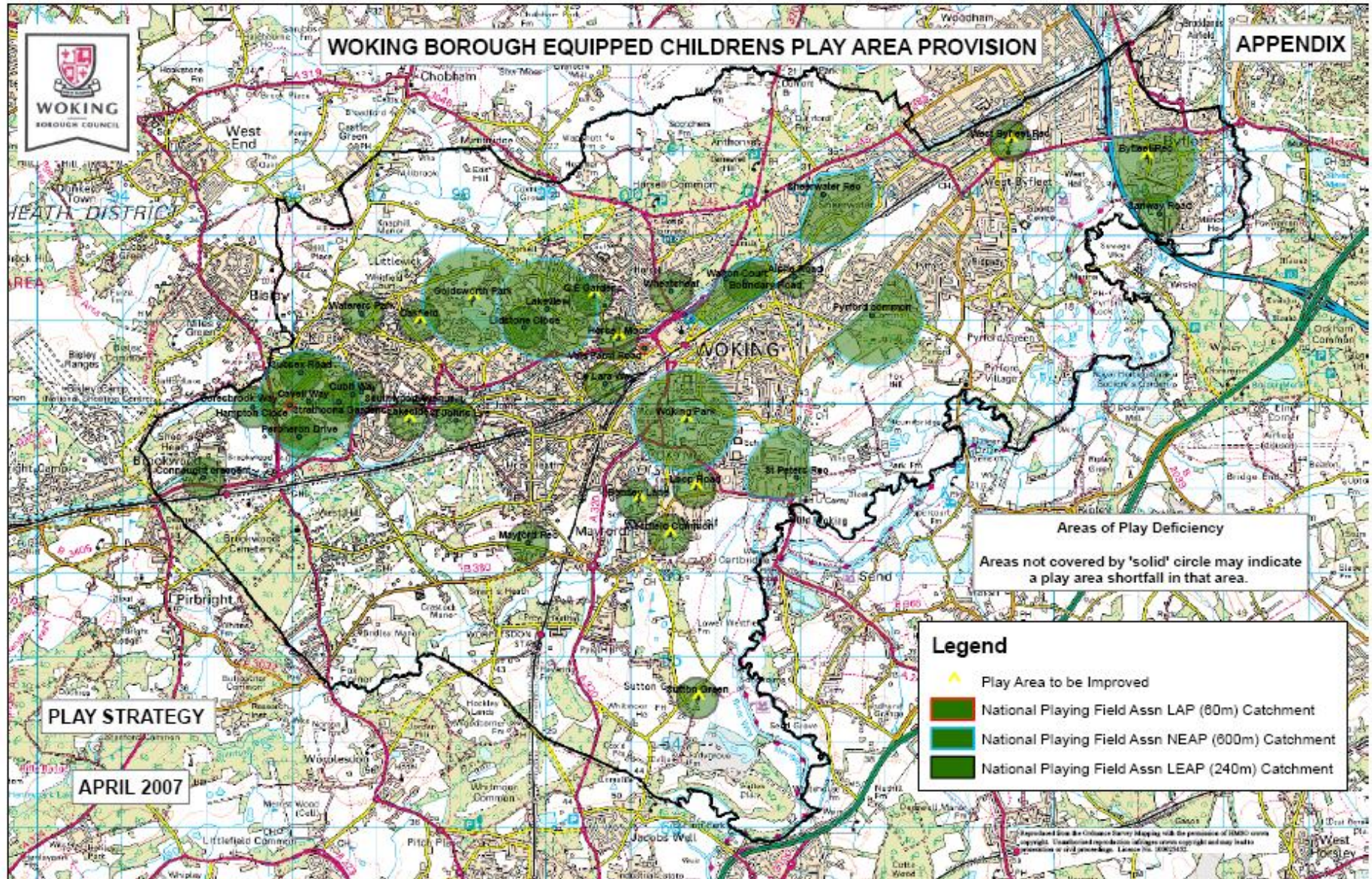
- **1 minute or 100m walking distance or 60m straight line distance**
- **100 square metres activity zone**
- **5 metres from nearest dwelling**
- **small low key games area**
- **for young children up to approximately 5-6 years old**

### **LOCAL EQUIPPED AREA FOR PLAY-LEAP**

- **5 minutes or 400m walking distance or 240 straight line distance**
- **400 square metres activity zone**
- **10 metres from nearest residential property boundary**
- **5 types of play equipment, small games area**
- **for children approximately 4-8 years old**

### **NEIGHBOURHOOD EQUIPPED AREA FOR PLAY-NEAP**

- **15 minutes or 1000m walking distance or 600m straight line distance**
- **1000 square metres activity zone**
- **30m from nearest residential property boundary**
- **8 types of play equipment, opportunities for ball games or wheeled activities**
- **for children of up to approximately 14 years old**

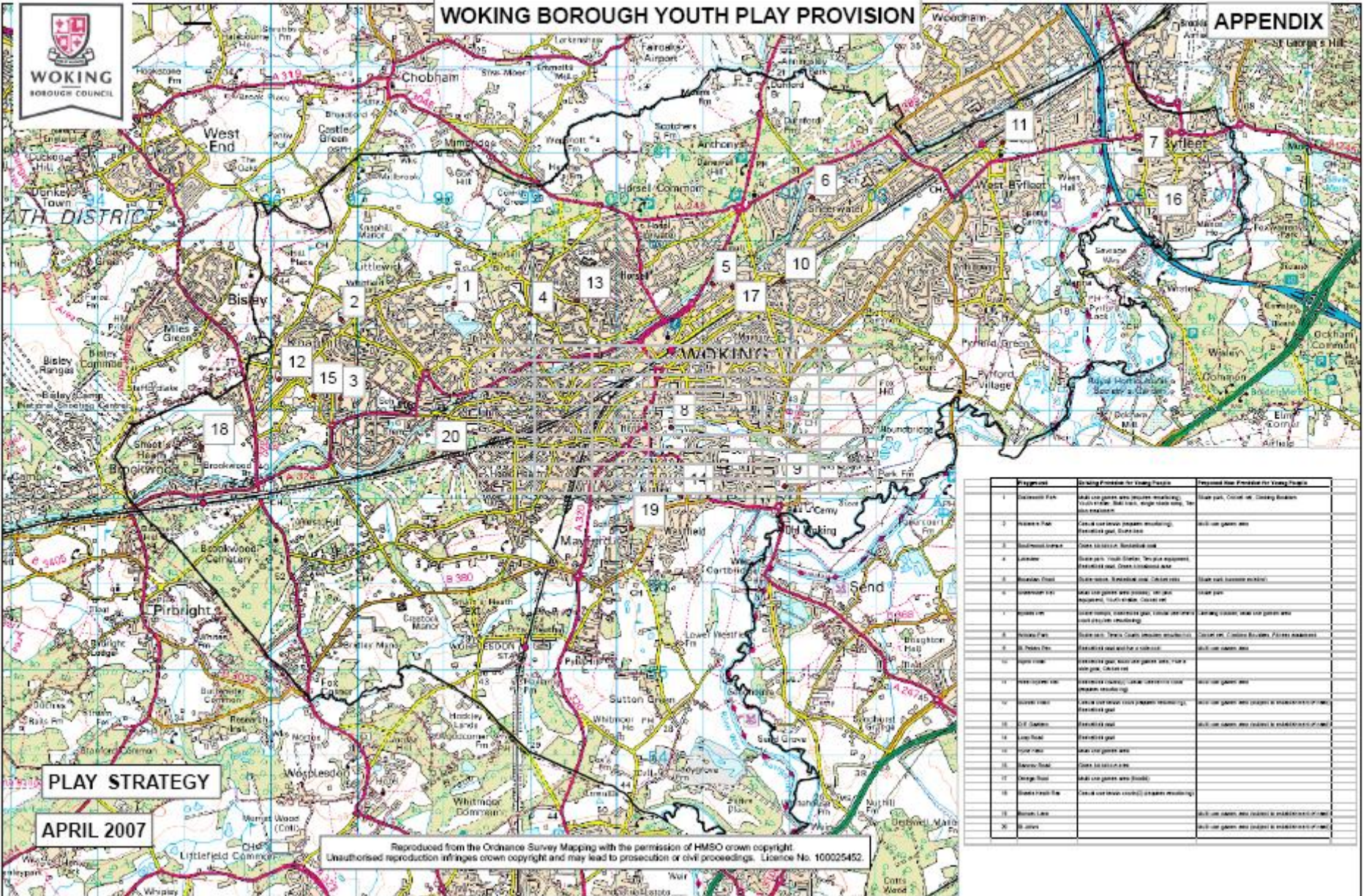




**Appendix D: Areas of Borough Identified as being deficient in Provision against NPFA Six Acre Standard.**

	<b>SIGNIFICANT AREAS OF BOROUGH NOT CURRENTLY COVERED TO NPFA STANDARDS FOR EQUIPPED PLAY AREAS.</b>	<b>COMMENTS</b>
1	Brook wood(Eastern end of Connaught Rd)	<b>Concerns previously expressed by Residents about levels of play provision in Brookwood</b>
2	Hermitage Woods Estate(Southern Part)	No known demand-nearest play area is Lakeside
3	Inkerman Way(North Side to Lockfield Drive)	No known demand-nearest play area is St Johns
4	Goldsworth Park(Southern Part between Lockfield Drive and Denton Way)	<b>Need for additional play provision identified previously</b>
5	St John's Hill Rd(North and South Side-between Railway Line and Basingstoke Canal)	No known demand-nearest play area is St Johns
6	Mt Hermon West(Between Guildford Rd and Railway Line)	No known demand-nearest play area is Woking Park
7	Westfield-West of Westfield Ave.	No known demand-nearest play area is at Westfield Common
8	Barnsbury Estate	<b>Concerns previously expressed by Residents about levels of play provision.</b>
9	Hook Heath	No known demand-nearest play area is St Johns
10	Horsell(North Part from Castle Rd to Horsell Birch)	No known demand-nearest play areas at Q.E.Gardens & Wheatsheaf
11	The Hockering	No known demand-nearest play area is at Woking Park
12	Maybury-(Oriental Road and Southern Part of Maybury Estate)	<b>Concerns about lack of provision previously expressed by residents</b>
13	Woodham	No known demand-nearest play area is at Wheatsheaf Recreation Ground
14	Lambourne Crescent	No known demand-nearest play area is at Sheerwater Recreation Ground
15	Pyrford Village and Area Around Norfolk Farm Rd.	<b>Concerns over lack of provision in Pyrford Village previously expressed by residents</b>
16	W.Byfleet South of Parvis Rd.	No known demand-nearest site is West Byfleet Recreation Ground
17	Dartnell Park	No known demand-nearest site is West Byfleet Recreation Ground
18	Manor Farm Estate Byfleet	No known demand-nearest site is at Sanway Rd
19	Byfleet North of Parvis Rd.	<b>Concerns over lack of provision previously expressed by residents</b>

## Appendix E



Playground	Existing Provision for Young Children	Proposed new Provision for Young Children	
1	Children's Park	Small car park, no play equipment, no seating.	Small park, covered in grass, no play equipment.
2	Children's Park	Small car park, no play equipment, no seating.	Small car park, no play equipment.
3	Children's Park	Small car park, no play equipment, no seating.	Small car park, no play equipment.
4	Children's Park	Small car park, no play equipment, no seating.	Small car park, no play equipment.
5	Children's Park	Small car park, no play equipment, no seating.	Small car park, no play equipment.
6	Children's Park	Small car park, no play equipment, no seating.	Small car park, no play equipment.
7	Children's Park	Small car park, no play equipment, no seating.	Small car park, no play equipment.
8	Children's Park	Small car park, no play equipment, no seating.	Small car park, no play equipment.
9	Children's Park	Small car park, no play equipment, no seating.	Small car park, no play equipment.
10	Children's Park	Small car park, no play equipment, no seating.	Small car park, no play equipment.
11	Children's Park	Small car park, no play equipment, no seating.	Small car park, no play equipment.
12	Children's Park	Small car park, no play equipment, no seating.	Small car park, no play equipment.
13	Children's Park	Small car park, no play equipment, no seating.	Small car park, no play equipment.
14	Children's Park	Small car park, no play equipment, no seating.	Small car park, no play equipment.
15	Children's Park	Small car park, no play equipment, no seating.	Small car park, no play equipment.
16	Children's Park	Small car park, no play equipment, no seating.	Small car park, no play equipment.
17	Children's Park	Small car park, no play equipment, no seating.	Small car park, no play equipment.
18	Children's Park	Small car park, no play equipment, no seating.	Small car park, no play equipment.
19	Children's Park	Small car park, no play equipment, no seating.	Small car park, no play equipment.
20	Children's Park	Small car park, no play equipment, no seating.	Small car park, no play equipment.

## Appendix F-Supervised Play Provision.

### Play Schemes

Name of setting	Ward	Ages	Special Needs Catered for?	No. of places offered	Opening times	When	Open to public?	Cost	Sibling Discount?
Haven at Beaufort	Goldsworth Park	4 - 11 years	yes and disabled toilets	32 children	8.00 am - 6pm	Term time, school holidays & inset days.	yes	£15.90/ £5.30 per session	£12.50 per day
Wise Owl Club	Goldsworth School	4 - 11 years	yes		8-8.40 am and 3-6pm	term time only	no	£2.00 am & £6.00pm	no
Flying Start Nursery	Pyrford	4 - 12 years			8.45 -5.45 mon- fri				
Maybury Community Holiday Playscheme	Maybury	5 - 15 years	yes ramps		mon - fri 9.30am 3.30pm	termtime and summer holidays.	yes	£4.80 per day or £22.00 per week	2nd and 3rd sibling and passport to leisure reductions
Sheerwater Recreation Ground Holiday Playscheme	Sheerwater	5 - 15 years	yes but not for disabled		mon - fri 9.30am 3.30pm	summer holidays	yes	£4.80 per day and £22.00 per week	2nd and 3rd siblings

Name of setting	Ward	Ages	Special Needs Catered for?	No. of places offered	Opening times	When	Open to public?	Cost	Sibling Discount?
Woking Holiday Recreation Playscheme and creche	Kingfield	5 - 14 years	yes lift ramps		8.45 am - 6pm	School holiday	yes	£16.50 per camp	no
The Blossom Montessori School	Pembroke Road	3 - 4 years 11mon ths	yes		tues- thurs 10am - 1pm	Christmas holiday, Easter holiday and summer holiday.	no	£13 .00 per session	no
Link Leisure	Board school Road	4 - 11 years 11mon ths	yes		10am-3pm 7:30 am - 8:45 am & 3:00 pm - 6:00 pm term time, week days	Easter, summer & Christmas holidays, evenings	no	£10.00 per day	no
Fun Club 36	Barnsbury	4 - 11 years	yes			school holidays and term time			yes
Wing Bats of West Byfleet	West Byfleet	5 - 11 years	yes		moon - fir 3.15- 5.30 pm	term time		£7.30 per session	
Manor Muffins Holiday Playscheme	West Byfleet	4- 12 years	yes		mon - fri 8.30 am - 6pm	school holidays		£1.75 per hour	£1.25 per hour
Hive After School Club	Byfleet				mon-fri 3.00- 5.30 pm	term times			

## Day Nurseries

Name of setting	Ward	Ages	Places	Opening times	When	Cost
Leapfrog	Knaphill	3 months -7 years		Mon - fri 8am-6pm and 7:00 am - 8:00 am early start and 6:00 pm - 7:00 pm late finish	all year full time	0 - 2 £42.00 per day , 2-3 £39.25 and 3 - 5 £ 36.50 per day
Noahs Ark Nursery	Worplesdon	0-5 years	1 Vacancy Age Range under 2yrs, 3 Vacancies Age Range 2yrs, 3 Vacancies Age Range 3- 4yrs	mon - fri 7.30 am - 6pm	all year full time	0 - 1 years £250.00 and 2 - 5 years £260.00
Day Dream Nursery	Horsell	3 months - 5 years	14	mon- fri 8.00 am - 6.00pm	all year	over the age of 2 £33.32
Caring Daycare	Sheerwater	0 - 7years 11months	14	mon - fri 8.00am - 6.30 pm	all year	
Spirit Daycare	Pyrford	2-5 years	13	mon-fri 8am-6pm	all year	£4.50 per hour , £40.00 per day and £18.00 per session
Carols Montessori Day Nursery	Shaftesbury Road	0-5 years		mon - fri 8am - 6pm	all year	£36.00 per day

Christopher Robin	31 Claremont Avenue	3months - 5 years		mon-fri 8am-6pm	all year full time	Ages 0-3yrs (full-time) £41.00 per day
Flying Start Nursery	Pyrford	3 months- 5 years	10	mon - fri 7.30 am - 6pm	all year, fulltime,part time	Ages 0-3yrs (less than 5 days per week) £42.00 per day
Kiddiwinks	Sheerwater	3 months - 5 years		mon- fri 8am-6pm	all year	Ages 3-5yrs (full-time) £40.00 per day
Toad Hall Nursery	Goldsworth Park	3 months - 5 years		mon - fri 8am-6pm	all year, full time	Ages 3-5yrs (less than 5 days per week) £41.00 per day
Teddies Nursery	Horsell	3 months - 5 years	4	mon, tue, wed 1.00 - 3.30pm	Term times	
Discovery Montessori School	West Byfleet	2-5 years	8		all year	
Little Cherubs Nursery	West Byfleet	3months - 5 years				free

### Creche Facilities

Name of setting	Ward	Ages catered for	Special Needs Catered for?	No. of places	Opening times	When	Open to public?	Cost
Asquith Court School	Westfield	1month - 5 years			mon - fri 9am - 5pm sat 9am - 1 pm	All year	yes	£3.00 per hour
Childcare in the Community	Maybury	6 month - 5 years			mon - 9.30 am 11am and 12.30 - 2.30 tues-fri 9.30am-11am	Term times	yes	£3.00 per session

## Play Groups

Name of setting	Venue	Ages	Places	Opening times	When	Open to public?	Cost
Magical Moments	Westfield	2-5 years	10	mon - thurs 9am-12pm	Term time	yes	£8.10 per session
Stepping Stones St Dunstons Nursery	Onslow Crescent	3-5 years	1	mon - thurs afternoons	Term time	no	neg funded places
Asquith Court Schools	Westfield	2-5 years	21	mon - fri 8am - 6pm	Term time	No	neg funded places
Abc pre-school	Westfield	2-5 years		9 am - 11.45am and 12.45 - 3pm	Term time	no	£6.50 per sesion
Humpty Dumpty pre-school	Knaphill	2-4 years 11 months		9am - 12pm	Term time	no	£5.50 per session
Jiminy Cricket Playgroup	Horsell	2 years 6months – 5years		mon-thurs 9.15 - 12pm, 1- 3.30pm, fri 9.15- 12pm	Term time		
Pied Piper pre-school	Knaphill	2-5 years	5	tues, thurs and fri 9.30-5pm	Term time	no	£6.50 per session
The Blossom Montessori School	Pembroke Road	2 years 6months- 4 years 11 months	1	mon - thurs 8.45-11.45 am 12.30- 3.30pm fri 8.45- 11.45	Term time		£13.00 per session
Wayside	Goldsworth Park	2years 4month- 4years 11month	3	mon - fri 9.10- 11.40 and 12.45 -3.15	Term time		£8.50 per session
Spinning Top pre-school	Sheerwater	2-5years	4	mon - fri 9.15- 11.45	Term time		£7.50 per session
Woodlands pre-school	Barnsbury	2-5years					£6.00 am £6.50 pm
Little Acorns	St Johns	2year 6month- 4year 10month		9.15 -11.45 mon - fri	Term time		£8.00 per session

<b>Name of setting</b>	<b>Venue</b>	<b>Ages</b>	<b>Places</b>	<b>Opening times</b>	<b>When</b>	<b>Open to public?</b>	<b>Cost</b>
Pyrford Playgroup	Pyrford	2year 6month – 5 year		mon- fri 9.00am - 12.00pm	Term time		£8.60 per session
Mayford pre-school	Mayford	2year 6month- 5year		mon - fri 9.15 - 12.15	Term time		£8.00 per session
Peter Pan pre-school	Knaphill	2year 6months- 5year		mon - tues 9.15 - 12pm and 12.45-2.45 wed- fri 9.15 - 12pm	Term time		
Puddle Ducks Tots and pre-school	Old Woking	2-5years		mon, tue & thur 9.15 - 12.45pm & 12.15-2.15 pm wed - fri 9.15- 12.45	Term time		
Young World pre-school	Horsell	2year 6month- 5years		mon - fri 9.15 - 12.15	Term time		£8.00 per session
Oaklyn pre-school	Cold Harbour Road	2year 6month - 5year		moon - fir 9.0 am - 12.00pm	Term time		
Crescent Playschool	West Byfleet	2years 6month - 4year 11month		moon - fir 9.15 -12pm	part time , term time		
Kings Pre-school	Byfleet	2-5 years		Monday - Wednesday: 8:45 am - 12:15 pm, 12:45 pm - 3:15 pm Tuesday, Thursday, Friday: 8:45 am - 12:15	Term time		£9.00 am £7.50 pm
Linden Nursery School	Byfleet	2-5 years		Monday to Thursday: 9:15am - 11.45am, 12:45pm - 2:45pm Friday: 9:15 are - 11.45 are.	Term time		£9.50 am £10 pm

## Toddler Groups

Name of setting	Venue	Ages catered for	Special Needs?	No. of places	Opening times	When	Open to public ?	Cost
Noah's Ark Mother and Toddler Group	Lake View Community Centre	for parents of under 5,s			toes 10am -11.30 am		no	£1.00 per session
Emmanuel Chapel Mums and Toddlers	Portugal Road				fri 9.330 am - 12pm			£1.00 per session
St Huges	Knaphill				fri 9.30 am -11.30 am			£2.00 per family
Trinity Toddlers	Brewery Road				Friday 9.30 - 11.30			£1.50 per session
Lakeside Toddlers	Wishbone Way				tue 10am-11.30 am			£2.00 per family
St Dunstans	Heathside Crescent				thurs 10am -12pm			50p per session
Heatherside Corner	White Rose Lane				wed 10am- 11.30	term time		50p per session
Holy Trinity	Knaphill				thur 1.15-2.45 pm			£1.00 per family
Little Seeds	Old Woking				thur 1.00am - 11.30am			£1.00 per family
St Andrews	Goldsworth Park				mon 10.00am -11.30 am			
St Marys	Horsell	birth -3 years old			tue 10.00 am - 12.00 pm	term time	yes	50p per child
Sunbeams	Woking				wed 10.00 am - 11.45	term time		£1.00 per parent
Woodham All Saints Church	Woodham				tue 10.00am - 11.45			£1.00 per family
Parent and Toddler Splash	Kingfield	3-5 years			mon , wed and fri 11.00 am -12.30 pm and sundays 8.30- 10am			£4.50 per session

## Out of School Clubs

Name of setting	Venue	Ages catered for	Special Needs Catered for?	No. of places offered	Opening times	When	Open to public?	Cost	Sibling Discount?
The Haven	Goldsworth Park	4 -11 years			8am - 6pm school holidays and inset days	summer holidays, easter holidays , half term and inset days	yes	£15.90 per day and £5.30 per session	
Wise Owl Club	Goldsworth Bridge Barn	4 - 11 years			mon - fri 8am - 8.40am and 3.00 pm - 6pm	term time	no	£2.00 am and £6.00 pm	
Flying Start Nursery	Pyrford	4 - 12 years			8.45 am - 5.45 pm mon - fri	School holidays	no		
The Blossom Montessori School	Pembroke Road	3 years - 4 years 1 months						£13.00 per session	
Link Leisure	Boardschool Road	4 - 11years 11months			mon-fri 10 am - 3pm	easter holidays, summer holidays, christmas holidays and evenings.	yes	£10.00 per day	
Fun Club 36	Barnsbury	4 -11years			mon-fri 8.30am - 6.00pm	School holidays			
Manor Muffins	West Byfleet	4- 12 years			3.10- 6pm	term time		£1.75 per hour	£1.25 per hour